

TITAN II
(HC-608)

Models S, T, AD

DISPENSER COFFEE GRINDER



Designed in EU.

Produced by HeyCafé Co., Ltd. 赫意凯 (常州) 电器设备有限公司

Building #6, #2 Tenglong Rd, Wujin Economic Development Zone, Jiangsu, 213161 China

WARNINGS

- 1 This appliance is not intended for use by persons (including children) with reduced physical, sensory or mental capabilities, or lack of experience and knowledge, unless they have been given supervision or instruction concerning use of the appliance by a person responsible for their safety.
- 2 Children should be supervised to ensure that they do not play with the appliance.
- 3 Care is needed when handling cutting grindstones during cleaning.
- 4 If the supply cord is damaged, it must be replaced by the manufacturer or its service agent or a similarly qualified person in order to avoid a hazard.



Correct Disposal of this product

This marking indicates that this product should not be disposed with other household wastes throughout the EU. To prevent possible harm to the environment or human health from uncontrolled waste disposal, recycle it responsibly to promote the sustainable reuse of material resources. To return your used device, please use the return and collection systems or contact the retailer where the product was purchased. They can take this product for environmental safe recycling.

Warranty Information

The manufacturer provides warranty in accordance with the legislation of the customer's own country of residence, with a minimum of 1 year (Germany: 2 years), starting from the date on which the appliance is sold to the end user.

The warranty only covers defects in material or workmanship.

The repairs under warranty may only be carried out by an authorized service centre. When making a claim under the warranty, the original bill of purchase (with purchase date) must be submitted.

The warranty will not apply in cases of:

Normal wear and tear and/or incorrect use, e.g. overloading of the appliance or grinding any substance other than coffee beans
Usage of non-approved accessories or non-original spare parts
Use of force, damage caused by external influences
Damage caused by nonobservance of the user manual, e.g. connection to a non-suitable mains supply or non-compliance with the installation instructions
Partially or completely dismantled appliances

TABLE of CONTENTS

1) Preface.....4.

2) Technical Specifications4.

3) General Description4.

4) Unpacking and installation5.

5) Operation.....7.

6) Safety devices.....9.

7) Safety instructions.....10.

8) Maintenance and service.....10.

9) Cleaning.....10.

10) Remarks and important details.....13.

1) Preface

Congratulations for purchasing the Titan II dispenser grinder. The Titan II is a commercial appliance to be used in coffee shops, espresso bars, hotels, restaurants, etc. The Titan II will grind whole bean coffee into variable, user-selectable (from super fine to coarse) coffee powder and will dose it to your espresso machine Porta Filter. Read this manual from cover to cover before using the appliance as it contains important instructions for the safety, operation, and maintenance of the appliance. Keep the manual in a safe place for future use and reference. The manufacturer reserves the right to modify from time to time the appliance and the manual accordingly.

2) Technical specifications Titan II

Dimensions:

Height: 600mm

Width: 210mm

Length: 330mm

Weight: 11.5Kg

Burrs diameter: 64mm

Hopper capacity: 1200gr of coffee beans

Optional hopper: 600 gr

Electrical Specifications:

Voltage: 110V/230V 50Hz/60Hz

Power: 350w

Duty Cycle: 50%

Grinding capacities: 1.5-2.5 gr/sec

3) General description



4) Unpacking and installation:

Warning: All appliances' technical handling operations such as installation, maintenance, or service should be performed by certified personnel or by your local dealer.

- After opening the box, make sure that the appliance is intact and that there is no visible damage. If there is any doubt, DONOT use the appliance and call your local dealer for further assistance.
- Unpack the carton box carefully. For your convenience we suggest storing all packaging materials where they can be used in the future, whenever the appliance's transportation is necessary.
- Place the grinder on a stable flat counter in a dry area away from water or water splashes.
- Fit the coffee residue tray into its specially designed housing in front of the appliance (fig 4.1).



Fig 4.1

- Before installing the beans hopper, please take few seconds to identify the different parts of the beans hopper crown and its relative position inside the grinding house structure. There is only one position for the hopper to be assembled correctly on top of the grinder
 - Figure 4.2 safety switch hole and safety switch pin
 - Figure 4.3 back hopper fixing screw and hopper fixing hole
 - Figure 4.4 positioning front slot and front rib

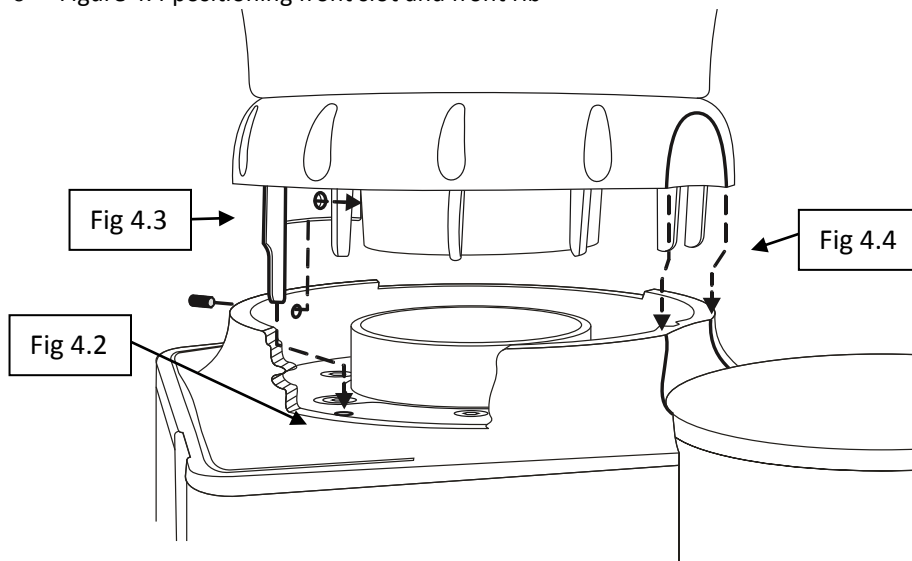


Fig 4.2-4.4

- Install the beans hopper firmly into its position on top of the body inside the top grindstone holder.
- Fasten the hopper to the appliance body by means of the supplied 2mm Allen screw and key. (fig.4.5) Make sure that the screw is inserted completely through the back hole on the hopper's crown.

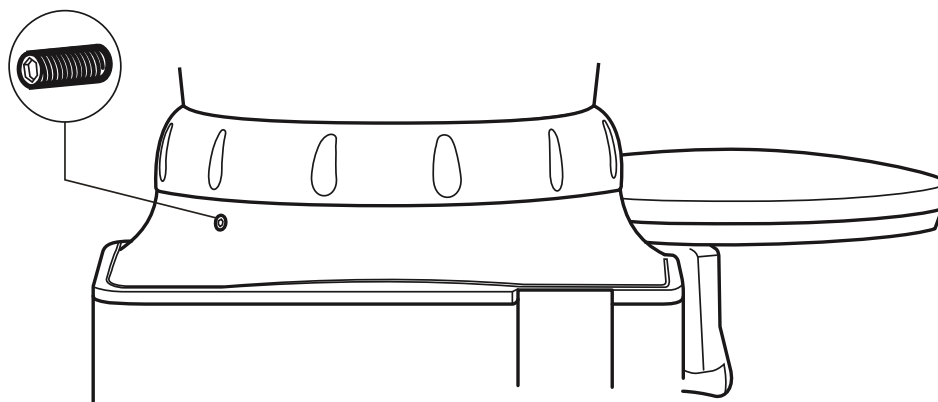


Fig4.5

- The TITAN II is equipped with a safety switch (figure 4.2) that is preventing the possibility to operate the grinder without the beans hopper is fully inserted and secured to its position.
- ! **Never bypass the safety-switch or insert foreign objects into the safety-hole to imitate hopper's crown pin.**
- ! **Never try to operate the grinder if the beans' hopper is not fully secured in its position.**
- Before plugging in the electrical cord, make sure:
 - The appliance voltage and frequency rating (according to the bottom cover label) is the same as the supply mains.
 - The wall socket is fitted with an efficient ground contact. DONOT plug the appliance into the supply mains if the ground system was not positively checked to be in compliance with current safety rules.
- ! **IT IS COMPULSORY TO EARTH THE APPLIANCE. The manufacturer can not be held responsible in the event that this regulation is not complied with.**
 - The power/current consumption of the appliance (according to the backside label) is consistent with the capacity of the relevant main socket.
 - The main socket is protected against short outs and power surges.
 - Do not use extension cables, plug adapters for multiple sockets, or make shift connections.
- Plug in the appliance.
- Upon first time operation, and before placing beans in to the hopper, **VISUALLY** check that the grindstone rotation direction is **clockwise** by switching the appliance ON for a few seconds.
- Should the rotation direction be wrong, do not use the appliance and contact your local dealer for further instructions.

5) OPERATION

Grinding coffee with Titan II grinder:

S Model (Manual):

The appliance is equipped with a 3 state operational switch ON-OFF-ON. (Fig 5.1A).

Switch ON the appliance by turning the timer knob either clockwise or counter clockwise from Off position to ON position.

Switch OFF the appliance by turning the knob back to point the OFF sign.

While on grinding state, never let the grinder run un-attended in order to avoid over filling of the dispenser which may cause powders' flow blockage inside the grinding house.



Fig 5.1A

T Model (Semi-Automatic operation):

- The appliance is equipped with a 5 minute timer.
- Switch ON the appliance by turning the timer knob clockwise to the desired time of operation.
- The appliance will switch OFF automatically when the preset time is over, alternatively it can be switched OFF by turning the timer knob all the way counterclockwise manually.

Remark: full dispenser capacity is 250gr. In normal operation it will take about **2 minutes** to completely fill the dispenser from empty. **Never grind to over-fill the dispenser.**

AD Model (Automatic operation)

- The appliance is equipped with a 3- state main switch: **OFF, ON, RUN.** (Fig 5.1B)



Fig 5.1B

- There are two possible ways to operate the grinder:
 - **Grinding limited quantities:** In order to start grinding turn the main switch knob clockwise from OFF position to ON position, then toggle to RUN position and release (the knob will return by itself to ON position). The grinder will start running. In order to stop the grinder, turn the main switch knob back (counterclockwise) to OFF position.
 - **Automatic grinding mode:** To start the grinding operation repeat same procedure as described in previous clause. Keep the grinder's main-switch in ON position. The grinder will grind coffee beans until the coffee grind in the dispenser will reach the full level. Once the coffee powders' level inside the dispenser reached its full level the grinder will stop grinding. The grinder will keep resting until the powder's level is low **and also** few portions of coffee were disposed. Then the grinder will resume grinding automatically until powders' level is reaching its full level again. In order to shut off the grinding operation turn main switch knob into the OFF position.
- ! On Automatic grinding mode, always make sure to have sufficient amount of coffee beans inside the beans hopper to avoid grinder's empty-running which may resulting possible over-heating.
- ! The Automatic model is designed for automatic operations; if you are intending to grind only limited quantities don't keep the switch on "ON" position. As this may result undesired operation of the grinder.

Operating intervals:

- In order to avoid over heating of grindstones and grinding chamber (resulting unnecessary heating of the coffee) the manufacturer is recommending using the appliance continuously for short intervals of a few minutes each. Never exceed 10 minutes of continuous grinding (or more than 1.5 kg of coffee beans).

Adjusting coffee grinding

- The Titan grinders' family (Titan I, II) are equipped with the revolutionary patented **Bottom-Setting**®™ mechanism with LCD to read the grinding position accurately and constantly. The position of the grinding setting knob and LCD are on the left side bottom part of the body (see fig. 5.2).



Fig 5.2

- The grinding grindstones' distance was factory pre adjusted to satisfy different common coffee grinds from fine Turkish coffee powder to coarse filter brewing. This clearance span can be achieved by turning the grinding setting knob for 12 full turns. Turning the grinding setting knob incrementally counterclockwise (CCW) will make the grind coarser and turning it clockwise (CW) will make the grind finer. Practically we recommend making grind changes by turning the knob ¼ turn at a time.
- **The coarseness setting and accordingly the LCD reading should be performed only when grinder is plugged to power.**
- In course of normal usage (and especially if changing setting of the grinder while grinder is unplugged) there might be a need to recalibrate the digital display to match the actual grinder's setting
- The digital system is including a self-homing (automatic reset). There are 2 possible cases for recalibration.
 - Case 1: The display is showing a finer digit than the actual grinding
 - Case 2: the display is showing coarser digit than the actual grinding
- In both cases start the recalibration by empty the coffee beans from grinding chamber by closing the hopper's door and grinding till grind it is empty.
- In both cases the recalibration is starting by setting the grinder to finest grinding coarseness by turning the knob clockwise.
- Case 1:
 - While setting, note that the display will show '- - ' which is below 0.1, continue to turn the knob till it cannot be turned any more. Then by turning back the knob counter clockwise the grinder already is recalibrated and ready for use.
- Case 2:
 - While reaching the point where the knob cannot be turned any more and the display still showing a number which is greater than '0.1'
 - Disconnect the power plug, turn the knob counterclockwise few turns (5-10),
 - Complete the recalibration as in Case 1 above.
- Test the recalibration by having the grinder plugged to the power, and make few turns coarser and back to finer make sure that every time at most fine (where the knob cannot be turned any finer) the display is showing '0.1'

Adjusting coffee dosing

- The dispenser is equipped with a portion volume controlling knob. Normally can set the dispenser to dispense 5-9.5gr of coffee powder

- In order to increase the amount of single dose, turn the adjusting knob counterclockwise and vice versa (Fig5.3)
- Test the portioned amounts by using a kitchen scale or simply by dosing single or double dose into your espresso machine's filter-handle (not supplied) and visually match the dosed portion with your standard.
- In order to achieve repeatable and consistent portioned amounts:
 - Make sure that the feeding star shaped mechanism is always overfilled with coffee powder.
 - Always retract the dosing lever all the way to the end of its stroke

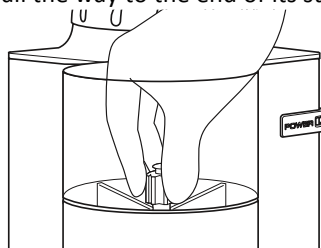


Fig5.3

Tamping

- Place your Espresso machine's 58mm filter-handle against the underside of the tamping device and push it upwards.

6) SAFETY DEVICES

A) Thermal overload protection

In order to eliminate the risk of fire, the motor is equipped with an overheat protection device which will cutoff the motor's power supply should it reach a high temperature.

- In the event that the thermal protection is tripped as a result of malfunction (e.g.: jammed grindstones, worn out bearings, foreign object in grinding chamber, etc.) the appliance main switch should be turned off immediately and the main power plug must be disconnected. For further handling of the device contact your local service provider, and allow the appliance to cool down before any further maintenance.
- In the event that the thermal protection is tripped as a result of a long continuous operation (read section 5, for operating intervals) allow the appliance to cool down and reset the thermal cutoff protection by unplugging the main cable from the socket. On the first operation after resetting a tripped overheat protection device observe the grinding quality and noise level, and if there are any irregularities shut down the appliance and call a certified technician for a complete analysis of the appliance.

B) Grinding chamber safety switch and hopper fixing screw

The grinding chamber is a hazardous area if the proper precautions aren't observed. In order to avoid any hand contact with running grindstones grinding chamber is equipped with a safety switch that can be activated only by a matching pin on the hopper's crown (Fig. 4.2) Do not attempt to operate the grinder without the hopper is fully placed and fixed in its position by hopper's fixing screw (Fig 4.3).

C) Coffee outlet guard

The coffee outlet guard (fig6.1) must always be fixed to the dispenser. On normal operation never remove the coffee outlet guard (unless when cleaning the dispenser, please refer to Chapter 9 Cleaning).



Fig6.1

7) SAFETY INSTRUCTIONS

- ! NEVER OPERATE THE GRINDER IF THE BEAN HOPPER IS NOT FULLY SECURED TO THE TOP GRINDSTONE HOLDER. BEFORE REMOVING THE HOPPER FOR ANY REASON MAKE SURE TO DISCONNECT THE POWER SUPPLY.
- ! AVOID CLEARING FOREIGN OBJECTS FROM THE GRINDING CHAMBER OR HOPPER WHEN THE APPLIANCE IS PLUGGED INTO A POWER SOCKET.
- ! Never attempt to insert your fingers or any foreign objects into the grinding chamber or grindstones.
- ! Be aware that grindstones continue rotating for a short while even after the grinding operation has ended.
- ! BEFORE ANY MAINTENANCE, EVEN FOR CLEANING, ALWAYS DISCONNECT THE POWER SUPPLY.
- ! In the event that the appliance has a malfunction or the grindstones need to be replaced, do not attempt to service the appliance by yourself.
- ! Do not change or tamper with the appliance.
- ! Do not use the appliance barefoot or if your hands or feet are damp.
- ! Do not use the cable wire to pull and disconnect the power plug.
- ! Always keep the appliance dry (internally and externally).
- ! Never put grinded coffee into the hopper or try to grind twice coffee powder.
- ! Never attempt grinding anything else other than coffee beans.

8) MAINTENANCE AND SERVICE

Warning: All appliances' technical handling operations, such as installation, maintenance, or service should be performed by certified personnel or by your local dealer.

Check the state of the grindstones periodically (approximately every 50kg of grinded coffee) Good condition grindstones will result in a high quality grind and prevent the appliances over heating. Replace grindstones every 400KG of grinded coffee (when using original replacement parts)

Be aware of the appliance's noise level. In case the noise level is higher than normal or irregular noises are coming from within the appliance, get certified personnel to perform an overall check of the appliance.

9) CLEANING

BEFORE ANY CLEANING ROUTINE DISCONNECT THE APPLIANCE POWER SUPPLY. NEVER USE RUNNING WATER TO CLEAN THE MAIN BODY AND DISPENSER. USE ONLY PERFECTLY CLEAN CLOTHS OR BRUSHES TO CLEAN THE APPLIANCE. DO NOT USE ABRASIVE CLEANING PRODUCTS AS THEY MAY WEAR OUT THE APPLIANCE COATING.

Cleaning the bean hopper

Take off the bean hopper (by releasing Bean Hopper safety screw, Fig.4-3) and rinse it thoroughly with water and soap. As the bean hopper is made of clear polymer, use only liquid detergent (free of abrasive components) and soft sponge. Before reinstalling the beans hopper back to its position, make sure it is dried thoroughly. To ensure great coffee taste, clean the bean hopper periodically.



Cleaning the grinding chamber and grinding parts

Follow the instruction below for grinding chamber and grinding parts cleaning:



<p>STEP1 After removing the hopper and before start disconnecting screws first identify the 3 top grind-stone holder's screws (marked with the number 1 on the grinders' cover)</p>	<p>STEP2 Disconnect the top grindstone holder screws (3 screws) using the supplied 3mm Allen key. Pull out the upper grindstone holder</p>	<p>STEP3 (Step 3 should be performed by certified technician only!) Use a screw driver and nuts spanner to release the bottom knife holder. Pull out the knife holder. Discover the grinding house</p>	<p>STEP4 Use a brush, a dry cloth, and a vacuum cleaner to clean the grinding chamber thoroughly.</p>
<p>STEP 5 Use a brush, a dry cloth, and a vacuum cleaner to clean the upper and lower grindstone thoroughly.</p>			

- Do not use sharp objects to scrape coffee residue off of the grindstones.
- Examine both of the grindstones' condition and replace them if necessary.
- The replacement and assembly of a new set of grindstones is a delicate task.

Only skilled technical personnel should be allowed to perform grindstone removal and assembly.

After all cleaning and replacing tasks are through make sure to assemble all of the parts and safety screws the same way as they were disconnected. If anything does not fit back together or there are some leftover parts, do not attempt to operate the appliance, call for the assistance of your technician.

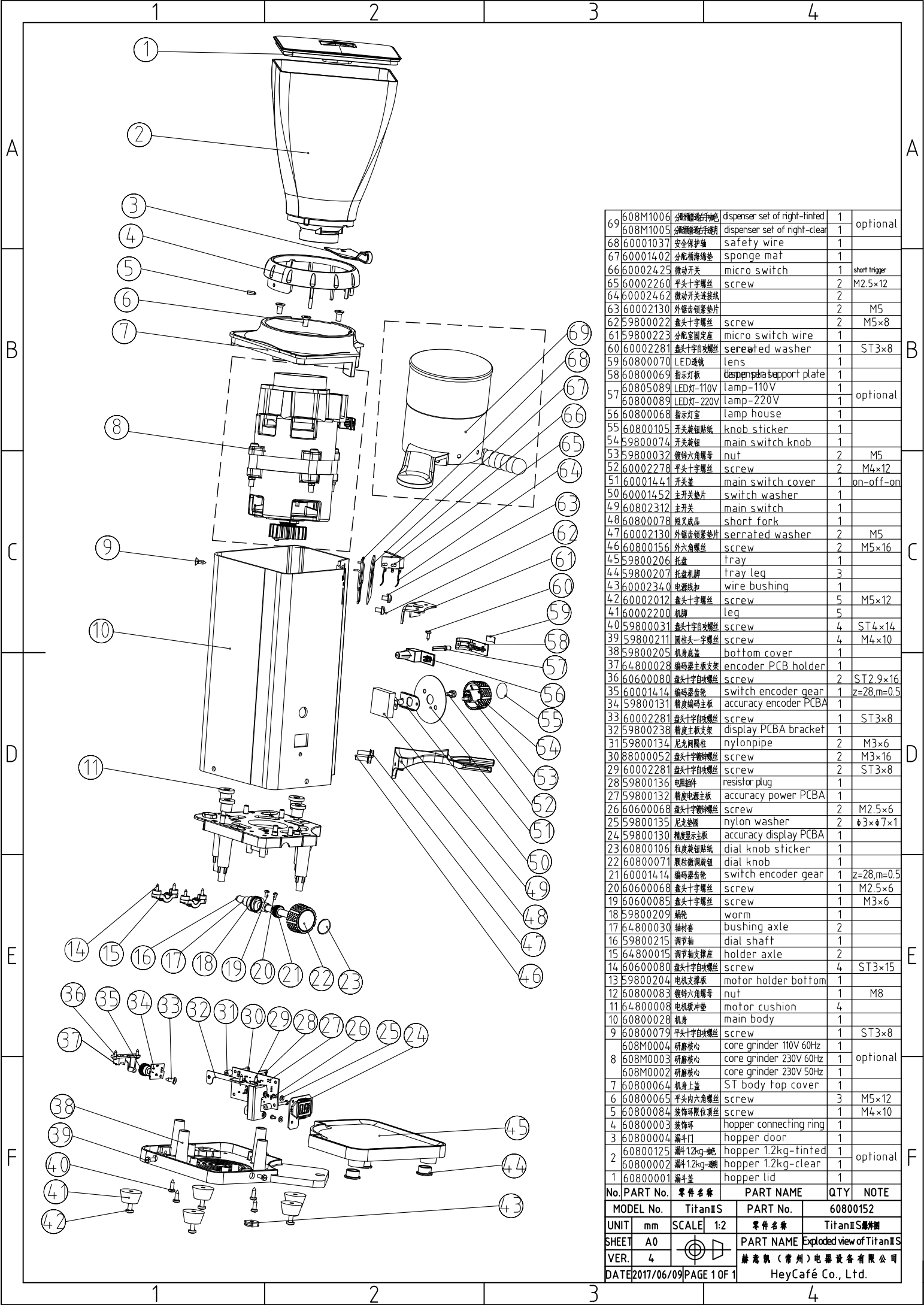
Cleaning the dispenser

<p>STEP1 Discharge all grinded coffee out of the dispenser into a dry container by operating the discharge handle.</p>	 <p>STEP2 Release the powder outlet guard by pulling it upward. The outlet guard is fixed by 2 rails and 2 snaps.</p>	 <p>STEP3 Use a clean brush to clean the coffee powder outlet, automatic switch housing, Brush the dosing chambers one by one while rotating the dispenser with the discharge handle. Use a dry cloth to remove oil stains and other marks from dispenser's clear window.</p>
---	---	--

- If a more thorough clean is required, then the operation must be performed by skilled technician.
- After dispenser is thoroughly cleaned and empty secure the powder outlet guard back to its original position by sliding it back until the snap clicks are heard.

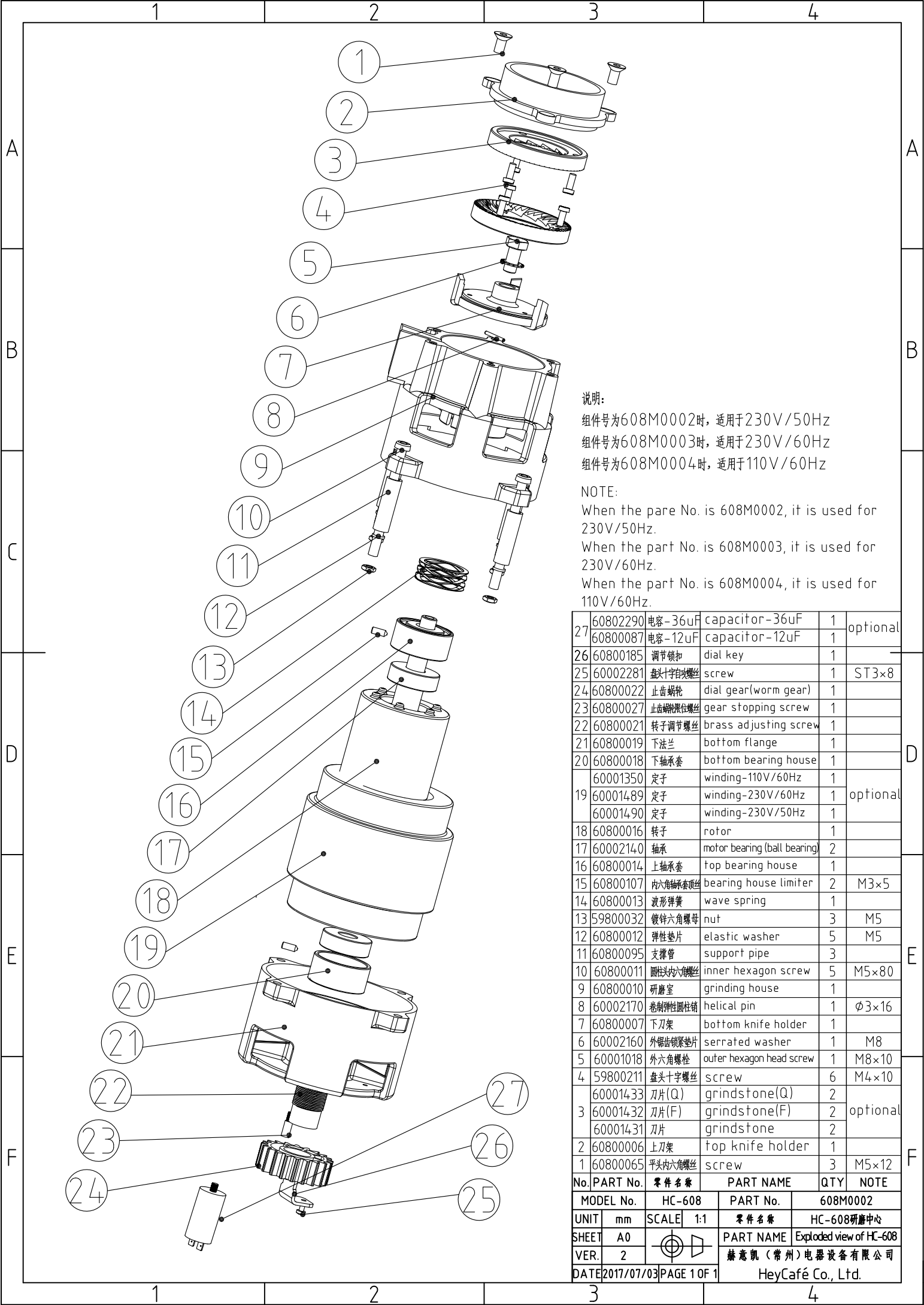
To ensure long lasting grinder and great fresh taste of coffee, the cleaning procedure as described above should be repeated routinely and at least once per month or as necessary according the grinder's usage and quality of beans.

END



69	608M1006	分配器右手组	dispenser set of right-finted	1	optional
68	608M1005	分配器左手组	dispenser set of right-clear	1	
67	60001402	分配器海绵垫	sponge mat	1	
66	60002425	微动开关	micro switch	1	short trigger
65	60002260	平头十字螺丝	screw	2	M2.5×12
64	60002462	微动开关连接线		2	
63	60002130	外锯齿锁紧垫片		2	M5
62	59800022	盘头十字螺丝	screw	2	M5×8
61	59800223	分配器固定座	micro switch wire	1	
60	60002281	盘头十字自攻螺丝	serewed washer	1	ST3×8
59	60800070	LED透镜	lens	1	
58	60800069	指示灯板	dispenser support plate	1	
57	60805089	LED灯-110V	lamp-110V	1	
56	60800089	LED灯-220V	lamp-220V	1	optional
55	60800068	指示灯室	lamp house	1	
54	60800105	开关按钮贴纸	knob sticker	1	
53	59800074	开关按钮	main switch knob	1	
52	59800032	镀锌六角螺母	nut	2	M5
51	60002278	平头十字螺丝	screw	2	M4×12
50	60001441	开关盖	main switch cover	1	on-off-on
49	60001452	主开关垫片	switch washer	1	
48	60802312	主开关	main switch	1	
47	60800078	短叉成品	short fork	1	
46	60002130	外锯齿锁紧垫片	serrated washer	2	M5
45	60800156	外六角螺丝	screw	2	M5×16
44	59800206	托盘	tray	1	
43	59800207	托盘机脚	tray leg	3	
42	60002340	电源线扣	wire bushing	1	
41	60002012	盘头十字螺丝	screw	5	M5×12
40	60002200	机脚	leg	5	
39	59800031	盘头十字自攻螺丝	screw	4	ST4×14
38	59800211	圆柱头一字螺丝	screw	4	M4×10
37	59800205	机身底座	bottom cover	1	
36	64800028	编码器主板支架	encoder PCB holder	1	
35	60600080	盘头十字自攻螺丝	screw	2	ST2.9×16
34	60001414	编码器齿轮	switch encoder gear	1	z=28,m=0.5
33	59800131	精度编码器主板	accuracy encoder PCBA	1	
32	60002281	盘头十字自攻螺丝	screw	1	ST3×8
31	59800238	精度主板支架	display PCBA bracket	1	
30	59800134	尼龙间隔柱	nylonpipe	2	M3×6
29	88000052	盘头十字自攻螺丝	screw	2	M3×16
28	60002281	盘头十字自攻螺丝	screw	2	ST3×8
27	59800136	电阻插件	resistor plug	1	
26	60600068	精度电源主板	accuracy power PCBA	1	
25	60600068	盘头十字自攻螺丝	screw	2	M2.5×6
24	59800135	尼龙垫圈	nylon washer	2	φ3×φ7×1
23	60800106	精度显示主板	accuracy display PCBA	1	
22	60800071	粒壳微调按钮	dial knob sticker	1	
21	60001414	编码器齿轮	dial knob	1	
20	60600068	盘头十字自攻螺丝	switch encoder gear	1	z=28,m=0.5
19	60600085	盘头十字螺丝	screw	1	M2.5×6
18	59800209	蜗轮	screw	1	M3×6
17	64800030	轴衬套	worm	1	
16	59800215	调节轴	bushing axle	2	
15	64800015	调节轴支撑座	dial shaft	1	
14	60600080	盘头十字自攻螺丝	holder axle	2	
13	59800204	电机支撑板	screw	4	ST3×15
12	60800083	电机缓冲垫	motor holder bottom	1	
11	64800008	电机缓冲垫	nut	1	M8
10	60800028	机身	motor cushion	4	
9	60800079	平头十字自攻螺丝	main body	1	
8	608M0004	研磨核心	screw	1	ST3×8
7	608M0003	研磨核心	core grinder 110V 60Hz	1	optional
6	608M0002	研磨核心	core grinder 230V 60Hz	1	optional
5	608M0001	研磨核心	core grinder 230V 50Hz	1	optional
4	60800064	机身上盖	core grinder 110V 60Hz	1	optional
3	60800065	平头内六角螺丝	core grinder 230V 60Hz	1	optional
2	60800084	装饰限位顶丝	core grinder 230V 50Hz	1	optional
1	60800003	装饰环	core grinder 230V 50Hz	1	optional
0	60800004	漏斗门	ST body top cover	1	
0	60800125	漏斗12kg-吨	hopper connecting ring	1	
0	60800002	漏斗12kg-吨	hopper door	1	
0	60800001	漏斗盖	hopper 1.2kg-finted	1	optional
0	60800001	漏斗盖	hopper 1.2kg-clear	1	optional
0	60800001	漏斗盖	hopper lid	1	

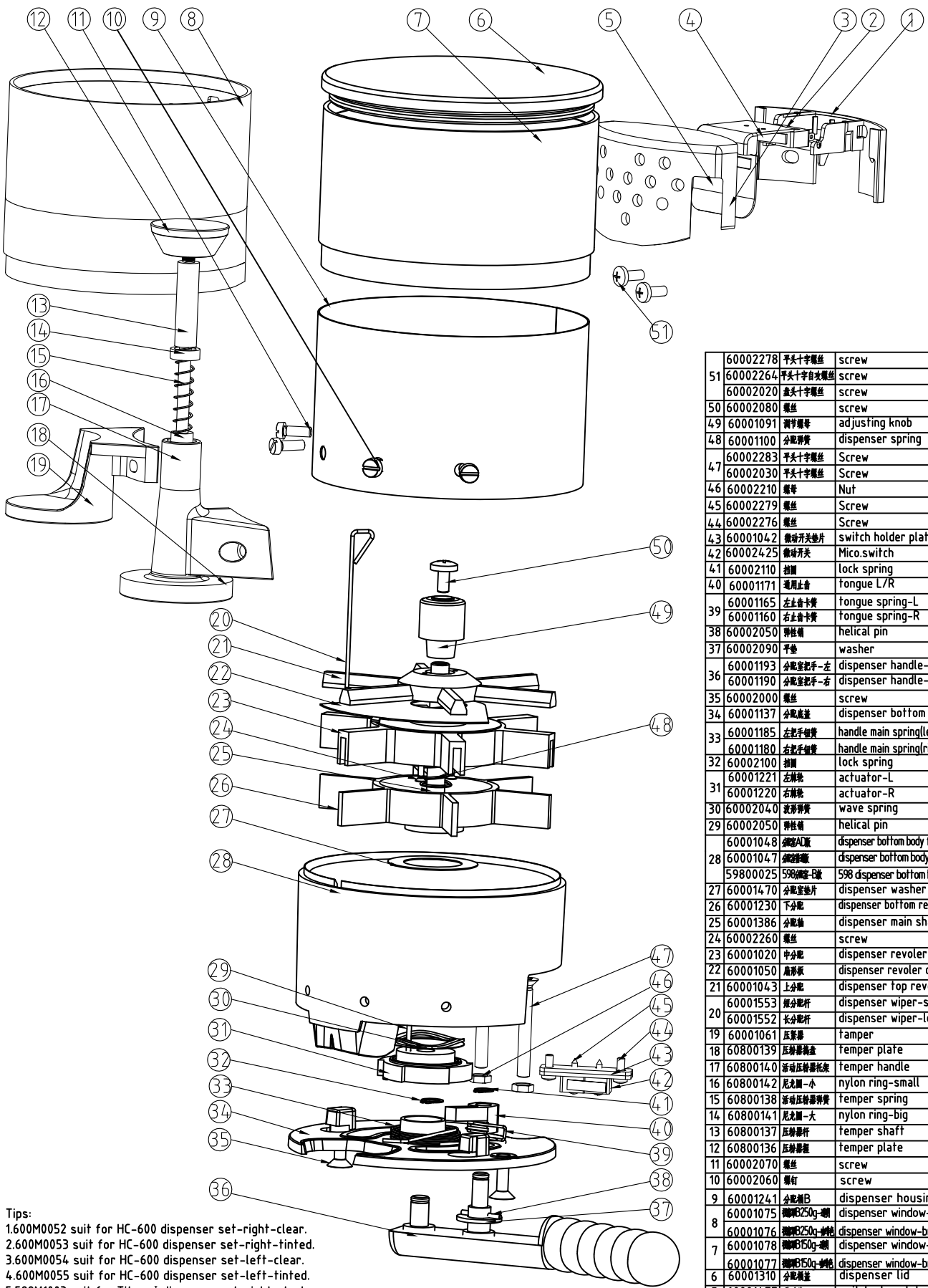
No.	PART No.	零件名称	PART NAME	QTY	NOTE
	MODEL No.	TitanIS		60800152	
	UNIT	mm	SCALE 1:2	零件名称	TitanIS爆炸图
	SHEET	A0		PART NAME Exploded view of TitanIS	
	VER.	4		赫志凯(常州)电器设备有限公司	
	DATE	2017/06/09	PAGE 1 OF 1	HeyCafé Co., Ltd.	



说明:
 组件号为608M0002时, 适用于230V/50Hz
 组件号为608M0003时, 适用于230V/60Hz
 组件号为608M0004时, 适用于110V/60Hz

NOTE:
 When the part No. is 608M0002, it is used for 230V/50Hz.
 When the part No. is 608M0003, it is used for 230V/60Hz.
 When the part No. is 608M0004, it is used for 110V/60Hz.

27	60802290	电容-36uF	capacitor-36uF	1	optional
	60800087	电容-12uF	capacitor-12uF	1	
26	60800185	调节锁扣	dial key	1	
25	60002281	盘头十字改锥	screw	1	ST3×8
24	60800022	止齿蜗轮	dial gear(worm gear)	1	
23	60800027	止齿蜗轮限位螺丝	gear stopping screw	1	
22	60800021	转子调节螺丝	brass adjusting screw	1	
21	60800019	下法兰	bottom flange	1	
20	60800018	下轴承套	bottom bearing house	1	
	60001350	定子	winding-110V/60Hz	1	
19	60001489	定子	winding-230V/60Hz	1	optional
	60001490	定子	winding-230V/50Hz	1	
18	60800016	转子	rotor	1	
17	60002140	轴承	motor bearing (ball bearing)	2	
16	60800014	上轴承套	top bearing house	1	
15	60800107	内六角轴承套顶丝	bearing house limiter	2	M3×5
14	60800013	波形弹簧	wave spring	1	
13	59800032	镀锌六角螺母	nut	3	M5
12	60800012	弹性垫片	elastic washer	5	M5
11	60800095	支撑管	support pipe	3	
10	60800011	圆柱头内六角螺丝	inner hexagon screw	5	M5×80
9	60800010	研磨室	grinding house	1	
8	60002170	卷制弹性圆柱销	helical pin	1	φ3×16
7	60800007	下刀架	bottom knife holder	1	
6	60002160	外锯齿锁紧垫片	serrated washer	1	M8
5	60001018	外六角螺栓	outer hexagon head screw	1	M8×10
4	59800211	盘头十字螺丝	screw	6	M4×10
	60001433	刀片(Q)	grindstone(Q)	2	
3	60001432	刀片(F)	grindstone(F)	2	optional
	60001431	刀片	grindstone	2	
2	60800006	上刀架	top knife holder	1	
1	60800065	平头内六角螺丝	screw	3	M5×12
No.	PART No.	零件名称	PART NAME	QTY	NOTE
MODEL No.	HC-608		PART No.	608M0002	
UNIT	mm	SCALE	1:1	零件名称	HC-608研磨中心
SHEET	A0		PART NAME Exploded view of HC-608		
VER.	2		赫志凯(常州)电器设备有限公司		
DATE	2017/07/03	PAGE	1 OF 1	HeyCafé Co., Ltd.	



- Tips:
- 1.600M0052 suit for HC-600 dispenser set-right-clear.
 - 2.600M0053 suit for HC-600 dispenser set-right-tinted.
 - 3.600M0054 suit for HC-600 dispenser set-left-clear.
 - 4.600M0055 suit for HC-600 dispenser set-left-tinted.
 - 5.598M1003 suit for Titan I dispenser set-right-clear.
 - 6.598M1004 suit for Titan I dispenser set-right-tinted.
 - 7.598M0010 suit for Titan I AD dispenser set-right-clear.
 - 8.598M0011 suit for Titan I AD dispenser set-right-tinted.
 - 9.608M1005 suit for Titan II dispenser set-right-clear.
 - 10.608M1006 suit for Titan II dispenser set-right-tinted.
 - 11.608M1007 suit for Titan II AD dispenser set-right-clear.
 - 12.608M1008 suit for Titan II AD dispenser set-right-tinted.

图中序号36, 60001190 分配室把手-右为组件料号, 包括60001194 把手短定位轴, 60001195 把手长定位轴, 60001197 把手铁芯右; 60001193分配室把手-左为组件料号, 包括60001194 把手短定位轴, 60001195 把手长定位轴, 60001198 把手铁芯左

	60002278	平头十字螺丝	screw	2	M4x12	Titan II
51	60002264	平头十字自攻螺丝	screw	2	ST4.2x10	Titan I
	60002020	盘头十字螺丝	screw	2	M4x10	HC-600
50	60002080	螺丝	screw	1	M5x10	
49	60001091	调节螺母	adjusting knob	1		
48	60001100	分配室簧	dispenser spring	1		
47	60002283	平头十字螺丝	Screw	2	M5x16	Titan
	60002030	平头十字螺丝	Screw	2	M5x40	HC-600
46	60002210	螺母	Nut	2	M5	
45	60002279	螺丝	Screw	2	ST2x12	
44	60002276	螺丝	Screw	2	M3x8	
43	60001042	微动开关垫片	switch holder plate	2	optional	
42	60002425	微动开关	Micro.switch	1	for AD	
41	60002110	挡圈	lock spring	1	7#	
40	60001171	通用止舌	tongue L/R	1		
39	60001165	左止舌卡簧	tongue spring-L	1	optional	
	60001160	右止舌卡簧	tongue spring-R	1		
38	60002050	螺旋销	helical pin	1	Φ2x20	
37	60002090	垫圈	washer	1	M10	
36	60001193	分配室把手-左	dispenser handle-left	1	optional	
	60001190	分配室把手-右	dispenser handle-right	1		
35	60002000	螺丝	screw	2	M5x16	
34	60001137	分配室盖	dispenser bottom cover	1		
33	60001185	左把手弹簧	handle main spring(left)	1	optional	
	60001180	右把手弹簧	handle main spring(right)	1		
32	60002100	挡圈	lock spring	1	8#	
	60001221	左棘轮	actuator-L	1		
31	60001220	右棘轮	actuator-R	1	optional	
30	60002040	波形弹簧	wave spring	1	0.5mm	
29	60002050	螺旋销	helical pin	1	Φ2x20	
	60001048	分配室底	dispenser bottom body for AD	1		
28	60001047	分配室底	dispenser bottom body	1	optional	
	59800025	598分配室底	598 dispenser bottom body-B	1		
27	60001470	分配室垫片	dispenser washer	2		
26	60001230	下分配	dispenser bottom revolver	1		
25	60001386	分配轴	dispenser main shaft	1		
24	60002260	螺丝	screw	2	M2.5x12	
23	60001020	中分配	dispenser revolver	1		
22	60001050	扇形板	dispenser revolver cover	1		
21	60001043	上分配	dispenser top revolver	1		
	60001553	短分配杆	dispenser wiper-short	1	Titan I	
20	60001552	长分配杆	dispenser wiper-long	1	600/Titan II	
19	60001061	压床盖	tamper	1	optional	
18	60800139	压粉器盖	temper plate	1		
17	60800140	压粉器手柄	temper handle	1		
16	60800142	尼龙圈-小	nylon ring-small	1	60801140	
15	60800138	压粉器弹簧	temper spring	1	压粉器 零件一 Temper set	
14	60800141	尼龙圈-大	nylon ring-big	1		
13	60800137	压粉器杆	temper shaft	1		
12	60800136	压粉器盖	temper plate	1		
11	60002070	螺丝	screw	2	M5x12	
10	60002060	螺钉	screw	2	M5x6	
9	60001241	分配室B	dispenser housing B	1		
8	60001075	咖啡B250g-透明	dispenser window-clear	1	optional for HC-600/Titan II	
	60001076	咖啡B250g-棕色	dispenser window-brown	1		
7	60001078	咖啡B50g-透明	dispenser window-clear	1	optional	
	60001077	咖啡B50g-棕色	dispenser window-brown	1	for Titan I	
6	60001310	分配室盖	dispenser lid	1		
5	60001477	限位片	switch stop plate	1		
4	60002425	微动开关	micro.switch	1		
3	60001477	保护盖	safety cover	1	optional for AD	
2	60001478	微动开关盖	cover for level switch	1		
1	60001476	微动开关	switch housing	1		
No.	PART No.	零件名称	PART NAME	QTY	NOTE	
MODEL No.	HC-600/Titan	PART No.	600M0052			
UNIT	mm	SCALE	1:3	零件名称	分配室B爆炸图	
SHEET	A3			PART NAME	dispenser B	
VER.	3			制造商 (常州) 电器设备有限公司		
DATE	2017/06/12	PAGE	1 OF 1	HeyCafé Co., Ltd.		