

TITAN II
Models ODG V1 (V3)
On Demand Grinder



Designed in EU.

Produced by HeyCafé Co., Ltd. 赫意凯 (常州) 电器设备有限公司

Building #6, #2 Tenglong Rd, Wujin Economic Development Zone, Jiangsu, 213161 China

WARNINGS

- 1 This appliance is not intended for use by persons (including children) with reduced physical, sensory or mental capabilities, or lack of experience and knowledge, unless they have been given supervision or instruction concerning use of the coffee grinder by a person responsible for their safety.
- 2 Children should be supervised to ensure that they do not play with the grinder.
- 3 Care is needed when handling cutting grindstones during cleaning.
- 4 If the supply cord is damaged, it must be replaced by the manufacturer or its service agent or a similarly qualified person in order to avoid a hazard.



Correct Disposal of this product

This marking indicates that this product should not be disposed with other household wastes throughout the EU. To prevent possible harm to the environment or human health from uncontrolled waste disposal, recycle it responsibly to promote the sustainable reuse of material resources. To return your used device, please use the return and collection systems or contact the retailer where the product was purchased. They can take this product for environmental safe recycling.

Warranty Information

The manufacturer provides warranty in accordance with the legislation of the customer's own country of residence, with a minimum of 1 year (Germany: 2 years), starting from the date on which the grinder is sold to the end user.

The warranty covers defects in material or workmanship only.

The repairs under warranty may only be carried out by an authorized service centre. When making a claim under the warranty, the original bill of purchase (with purchase date) must be submitted.

The warranty will not apply in cases of:

- Normal wear and tear and/or incorrect use, e.g. overloading of the grinder or grinding any substance other than coffee beans.
- Usage of non-approved accessories or non-original spare parts.
- Use of force, damage caused by external influences
- Damage caused by nonobservance of the user manual, e.g. connection to a non-suitable mains supply or non-compliance with the installation instructions
- Partially or completely dismantled appliances

TABLE of CONTENTS

1) Preface.....4.

2) Technical Specifications4.

3) General Description4.

4) Unpacking and installation5.

5) Operation.....7.

6) Safety devices.....9.

7) Safety instructions.....10.

8) Maintenance and service.....10.

9) Cleaning.....10.

10) Remarks and important details.....13.

1) PREFACE

Congratulations for purchasing the Titan II 'On Demand Grinder'. The Titan II is a commercial appliance to be used in coffee shops, espresso bars, hotels, restaurants, etc. The Titan II grinds whole bean roasted coffee into variable, user selectable (from super fine to course) coffee powder and will dose it to your espresso machine Porta Filter or any other means of storage. Read this manual from cover to cover before using the appliance as it contains important instructions for the safety, operation, and maintenance of the appliance. Keep the manual in a safe place for future use and reference. The manufacturer reserves the right to modify from time to time the appliance and the manual accordingly.

2) TECHNICAL SPECIFICATIONS Titan II

Dimensions:

Height: 600mm
Width: 210mm
Length: 330mm
Weight: 10.5Kg
Burrs diameter: 64mm
Hopper capacity (whole beans): 1200gr
Optional hopper: 600 gr

Electrical Specifications:

Voltage: 110V/230V 50Hz/60Hz
Power: 350w
Duty Cycle: 50%

Grinding capacities:

@Espresso setting: 2.0-2.5 gr/sec

3) General Description (V1)



4) UNPACK and INSTALLATION:

Warning: Grinder's entire technical handling operations such as installation, maintenance, or service should be performed by certified personnel or by your local dealer.

- After opening the box, make sure that the appliance is intact and that there is no visible damage. If there is any doubt, DONOT use the appliance and call your local dealer for further assistance.
- Unpack the carton box carefully. For your convenience we suggest storing all packaging materials where they can be used in the future, whenever the appliance's transportation is necessary.
- Place the grinder on a stable flat counter in a dry area away from water or water splashes.
- Fit the coffee residue tray into its specially designed housing in front of the appliance (fig 4.1).

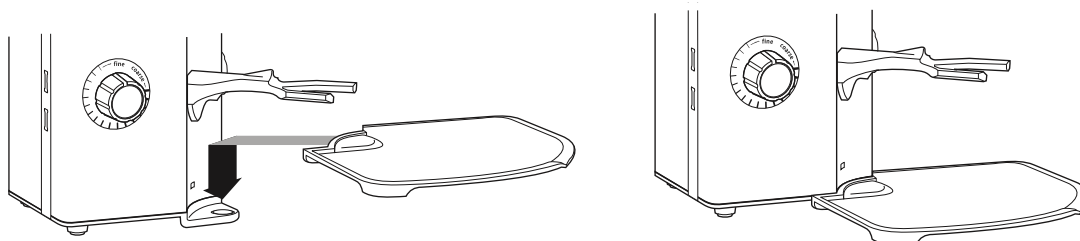


Fig 4.1

- Before installing the beans hopper, please take few seconds to identify the different parts of the beans hopper crown and its relative position inside the grinding house structure. There is only one position for the hopper to be assembled correctly on top of the grinder
 - Figure 4.2 safety switch hole and safety switch pin
 - Figure 4.3 back hopper fixing screw and hopper fixing hole
 - Figure 4.4 positioning front slot and front rib

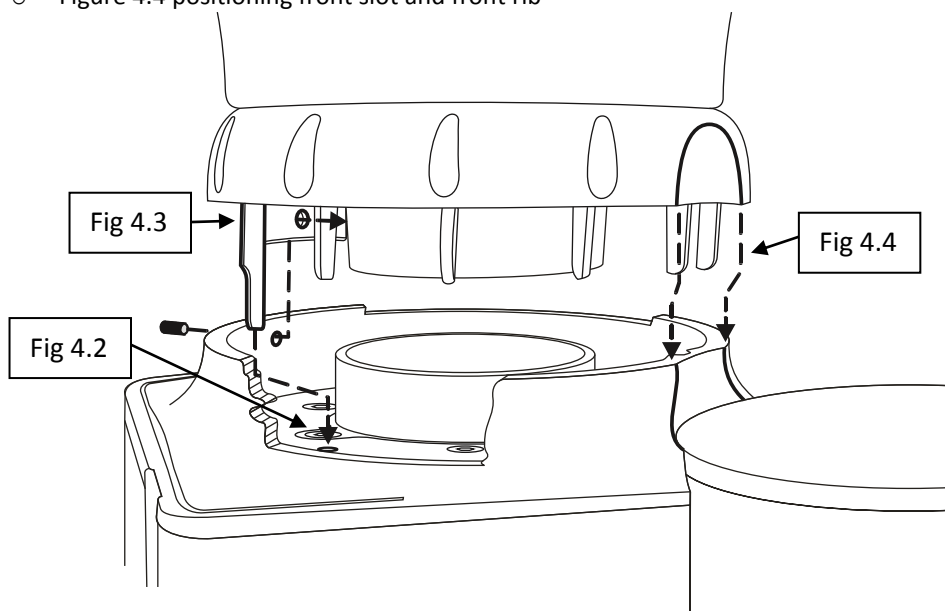


Fig 4.2-4.4

- Install the beans hopper firmly into its position on top of the body inside the top grindstone holder.
- Fasten the hopper to the appliance body by means of the supplied 2mm Allen screw and key. (fig.4.5) Make sure that the screw is inserted completely through the back hole on the hopper's crown.

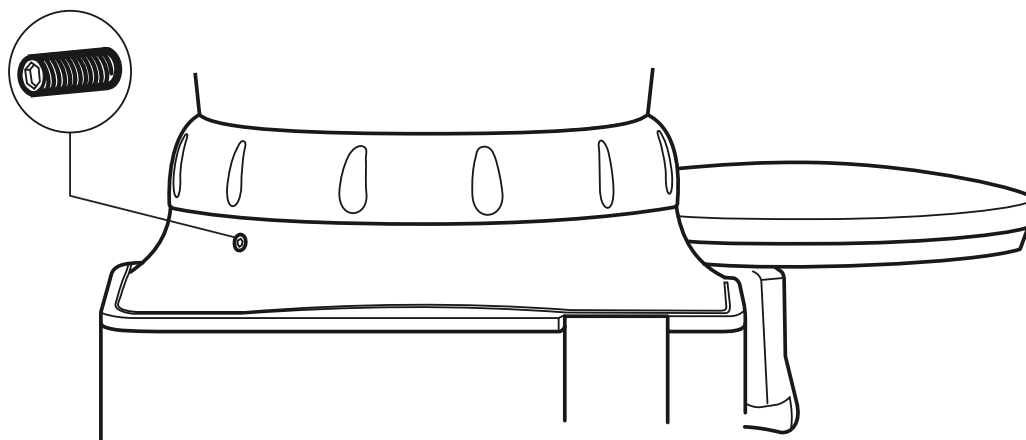


Fig4.5

- The TITAN II is equipped with a safety switch (figure 4.2) that is preventing the possibility to operate the grinder without the beans hopper is fully inserted and secured to its position.
- ! **Never bypass the safety-switch or insert foreign objects into the safety-hole to imitate hopper's crown pin.**
- ! **Never try to operate the grinder if the beans' hopper is not fully secured in its position.**
- Before plugging in the electrical cord, make sure:
 - The appliance voltage and frequency rating (according to the bottom cover label) is the same as the supply mains.
 - The wall socket is fitted with an efficient ground contact. DONOT plug the appliance into the supply mains if the ground system was not positively checked to be in compliance with current safety rules.
- ! **IT IS COMPULSORY TO EARTH THE APPLIANCE. The manufacturer can not be held responsible in the event that this regulation is not complied with.**
 - The power/current consumption of the appliance (according to the backside label) is consistent with the capacity of the relevant main socket.
 - The main socket is protected against short outs and power surges.
 - Do not use extension cables, plug adapters for multiple sockets, or make shift connections.
- Plug in the appliance.
- Upon first time operation, and before placing beans in to the hopper, **VISUALLY** check that the grindstone rotation direction is **clockwise** by switching the appliance ON for a few seconds.
- Should the rotation direction be wrong, do not use the appliance and contact your local dealer for further instructions.

5) OPERATION for V1 models (for V3 models jump forward to page 8)

Grinding coffee:



Fig 5.1

Before start grinding coffee please spend few minutes to learn and understand the concept of the Titan On demand grinding controller (fig. 5.1.)

Modes of operation:

The Titan ODG can be operated in 3 different modes. Activating (or deactivating) each one of the modes, is achieved by single short pressing on the relative mode selector button. Once activated, a green LED will turn on.

- **Continues mode**, while in continues mode pressing longer than 3 sec on continues-mode button will start the grinder (The relative LED will blink as long as the grinder is running) stopping the grinder by another short press on continues-mode button.
- **Single cup mode**, while in single cup mode any press on the demand switch (fig 5.2) will activate the grinder to grind a precisely timed dose (time can be programmed by user) into the filter handle.
- **Double cup mode**, while in double cup mode any press on the demand switch (fig 5.2) will activate the grinder to grind a precisely timed dose (time can be programmed by user) into the filter handle.

Remark: Stopping an undesired grinding operation (before reaching complete dose) by pressing continues mode button.

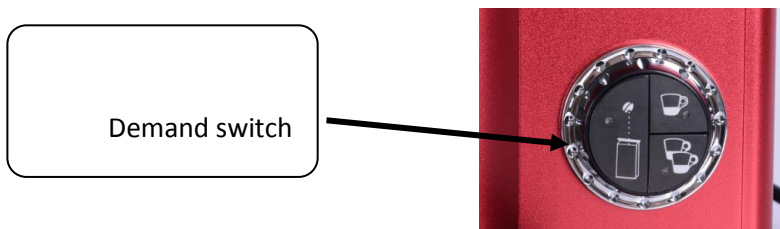


Fig 5.2

Dose counting LCD:

The Titan ODG V1 grinder is equipped with 3 independent dosing counters.

- In order to view the content of each counter, a single press on the counter's selector will display the next counter's content and at the same time the relative counter's LED will turn on.
- 2 of the counters are resettable (middle and left most LED); in order to reset each of these 2 counters a 5 sec continuous press on the counter selector will zero the relative counter.
- On single cup mode each coffee demand will increase the counting on all the 3 counters in 1.
- On double cup mode each coffee demand will increase the counting on all 3 counters in 2.
- On continuous mode the counters are not counting.

Programming grinding time for single and double cup mode:

The grinder was factory set with time values for single and double dose grinding periods. These preset values are obviously estimated and user should find his own times according to the coffee grinding request. In general **as the coarseness setting of grind is coarser the time required to grind same weight of coffee is shorter**. Additionally different types of coffee blends and coffee shops are requiring different dose sizes for their single and double cups (6.5gr to 9.5gr per single cup and 11gr to 18gr for double cup). The Titan ODG supports user's need to modify grinding time settings frequently.

In order to modify time settings of single cup or double cup mode please follow these steps:

1. Press the desired mode selector button continuously for longer than 3 sec. when in programming mode the mode selector's LED blinks.
2. At programming mode LCD display shows your current set time (in seconds and tenths of seconds).
3. In order to increase or decrease set time simply rotate the peripheral scale of the knob. Follow the new time set up on the LCD.
4. When reaching the desired time value press shortly the mode selector button to return to normal working mode (watch the display is returning to display the counting)

Grinding in continuous mode:

The Titan ODG was designed to grind continuously into bags or any other collecting container (for more details also refer to 2in1 section 6). Nevertheless this grinder was not designed as a pure "bags grinder". We suggest:

- **In continuous mode do not grind more than 10kg (20 pounds) of coffee per day.**
- **Grind in intervals of not more than 1 kg (2 pounds) per hour.**
- **When grinding in continuous mode, keep the powder outlet top cover open and shake the bag from time to time. View the free flow of coffee to avoid back logging of the powder into the grinding chamber. In that case, stop the grinding, use the provided brush to evacuate the clogged powder into the bag and resume grinding.**

1. Select continuous mode button (continuous mode LED is turned on)
2. Place the collecting container under the outlet chute (fig 5.4). Press the continuous mode button for longer than 3 sec.
3. The grinder will turn on and the LED will start blinking. Stop the grinding by another short press on continuous mode button.

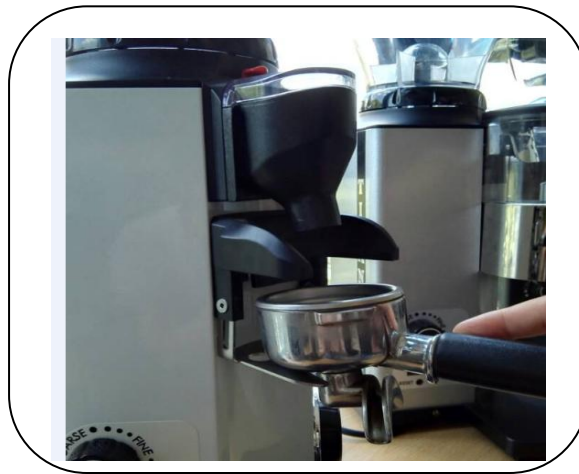


Fig. 5.3

fig 5.4

(V3 ONLY)

5) OPERATION (for V3 models only)

Grinding coffee with Titan V3 On Demand Grinder:

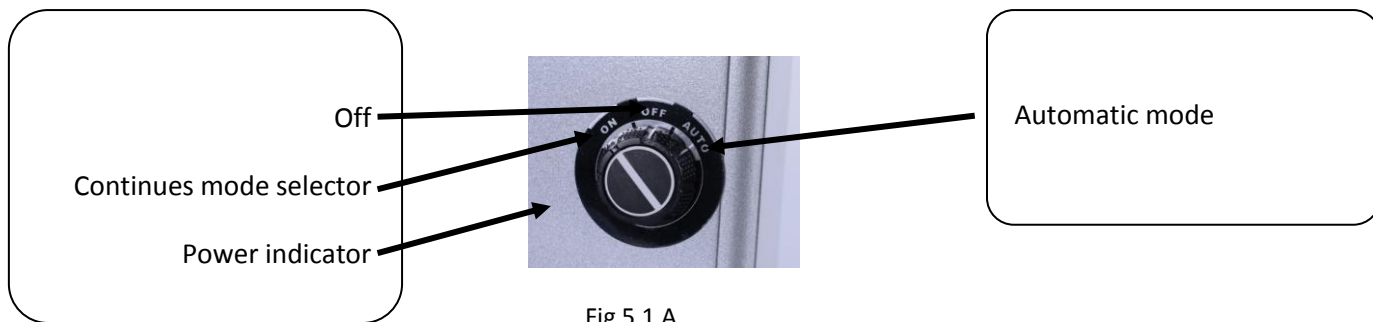


Fig 5.1 A

Modes of operation:

The HC-600 ODG V3 grinder is installed with a simple operating main switch consisting of 2 running modes. (fig. 5.1 A)

- **Continues mode**, while selecting the ON position, the grinder will run and grind coffee continuously up until the user will switch main switch back to Off position.
- **Dosing mode**, while selecting the Auto position, the grinder will run together with the demand switch and as long as it pressed.

Grinding in continues mode:

The HC-600 ODG is designed to grind continuously into bags or any other collecting tool. Nevertheless this machine was not designed as a pure “bags grinder”. We suggest:

- **In continues mode do not grind more than 10kg (20 pounds) of coffee per day.**
- **Grind in intervals of not more than 1 kg (2 pounds) per hour.**
- **When grinding in continues mode, keep the powder outlet top cover open and shake the bag from time to time. View the free flow of coffee to avoid back logging of the powder into the grinding chamber. In that case, stop the grinding, use the provided brush to evacuate the clogged powder into the bag and resume grinding.**

(V3 ONLY)

Operating intervals:

- In order to avoid over heating of grindstones and grinding chamber (resulting unnecessary heating of the coffee) the manufacturer is recommending using the appliance continuously for short intervals of a few minutes each. Never exceed 10 minutes of continuous grinding (or more than 1.5 kg of coffee beans).

Adjusting coffee grinding

- The Titan grinders' family (Titan I, II) are equipped with the revolutionary patented **Bottom-Setting**®™ mechanism with LCD to read the grinding position accurately and constantly. The position of the grinding setting knob and LCD are on the left side bottom part of the body (see fig. 5.2).



Fig 5.2

- The grinding grindstones' distance was factory pre adjusted to satisfy different common coffee grinds from fine Turkish coffee powder to coarse filter brewing. This clearance span can be achieved by turning the grinding setting knob for 12 full turns. Turning the grinding setting knob incrementally counterclockwise (CCW) will make the grind coarser and turning it clockwise (CW) will make the grind finer. Practically we recommend making grind changes by turning the knob ¼ turn at a time.
- **The coarseness setting and accordingly the LCD reading should be performed only when grinder is plugged to power.**
- In course of normal usage (and especially if changing setting of the grinder while grinder is unplugged) there might be a need to recalibrate the digital display to match the actual grinder's setting
- The digital system is including a self-homing (automatic reset). There are 2 possible cases for recalibration.
 - Case 1: The display is showing a finer digit than the actual grinding
 - Case 2: the display is showing coarser digit than the actual grinding
- In both cases start the recalibration by empty the coffee beans from grinding chamber by closing the hopper's door and grinding till grind it is empty.
- In both cases the recalibration is starting by setting the grinder to finest grinding coarseness by turning the knob clockwise.
- Case 1:
 - While setting, note that the display will show '- - ' which is below 0.1, continue to turn the knob till it cannot be turned any more. Then by turning back the knob counter clockwise the grinder already is recalibrated and ready for use.
- Case 2:
 - While reaching the point where the knob cannot be turned any more and the display still showing a number which is greater than '0.1'
 - Disconnect the power plug, turn the knob counterclockwise few turns (5-10),
 - Complete the recalibration as in Case 1 above.
- Test the recalibration by having the grinder plugged to the power, and make few turns coarser and back to finer make sure that every time at most fine (where the knob cannot be turned any finer) the display is showing '0.1'

6) SAFETY DEVICES

A) Thermal overload protection

In order to eliminate the risk of fire, the motor is equipped with an overheat protection device which will cutoff the motor's power supply should it reach a high temperature.

- In the event that the thermal protection is tripped as a result of malfunction (e.g.: jammed grindstones, worn out bearings, foreign object in grinding chamber, etc.) the appliance main switch should be turned off immediately and the main power plug must be disconnected. For further handling of the device contact your local service provider, and allow the appliance to cool down before any further maintenance.
- In the event that the thermal protection is tripped as a result of a long continuous operation (read section 5, for operating intervals) allow the appliance to cool down and reset the thermal cutoff protection by unplugging the main cable from the socket. On the first operation after resetting a tripped overheat protection device observe the grinding quality and noise level, and if there are any irregularities shut down the appliance and call a certified technician for a complete analysis of the appliance.

B) Grinding chamber safety switch and hopper fixing screw

The grinding chamber is a hazardous area if the proper precautions aren't observed. In order to avoid any hand contact with running grindstones grinding chamber is equipped with a safety switch that can be activated only by a matching pin on the hopper's crown (Fig. 4.2) Do not attempt to operate the grinder without the hopper is fully placed and fixed in its position by hopper's fixing screw (Fig 4.3).

7) SAFETY INSTRUCTIONS

- ! NEVER OPERATE THE GRINDER IF THE BEAN HOPPER IS NOT FULLY SECURED TO THE TOP GRINDSTONE HOLDER. BEFORE REMOVING THE HOPPER FOR ANY REASON MAKE SURE TO DISCONNECT THE POWER SUPPLY.
- ! AVOID CLEARING FOREIGN OBJECTS FROM THE GRINDING CHAMBER OR HOPPER WHEN THE APPLIANCE IS PLUGGED INTO A POWER SOCKET.
- ! Never attempt to insert your fingers or any foreign objects into the grinding chamber or grindstones.
- ! Be aware that grindstones continue rotating for a short while even after the grinding operation has ended.
- ! BEFORE ANY MAINTENANCE, EVEN FOR CLEANING, ALWAYS DISCONNECT THE POWER SUPPLY.
- ! In the event that the appliance has a malfunction or the grindstones need to be replaced, do not attempt to service the appliance by yourself.
- ! Do not change or tamper with the appliance.
- ! Do not use the appliance barefoot or if your hands or feet are damp.
- ! Do not use the cable wire to pull and disconnect the power plug.
- ! Always keep the appliance dry (internally and externally).
- ! Never put grinded coffee into the hopper or try to grind twice coffee powder.
- ! Never attempt grinding anything else other than coffee beans.

8) MAINTENANCE AND SERVICE

Warning: All appliances' technical handling operations, such as installation, maintenance, or service should be performed by certified personnel or by your local dealer.

Check the state of the grindstones periodically (approximately every 50kg of grinded coffee) Good condition grindstones will result in a high quality grind and prevent the appliances over heating. Replace grindstones every 400KG of grinded coffee (when using original replacement parts)

Be aware of the appliance's noise level. In case the noise level is higher than normal or irregular noises are coming from within the appliance, get certified personnel to perform an overall check of the appliance.

9) CLEANING

BEFORE ANY CLEANING ROUTINE DISCONNECT THE APPLIANCE POWER SUPPLY. NEVER USE RUNNING WATER TO CLEAN THE MAIN BODY AND DISPENSER. USE ONLY PERFECTLY CLEAN CLOTHS OR BRUSHES TO CLEAN THE APPLIANCE. DO NOT USE ABRASIVE CLEANING PRODUCTS AS THEY MAY WEAR OUT THE APPLIANCE COATING.








Cleaning the bean hopper

Take off the bean hopper (by releasing Bean Hopper safety screw, Fig.4-3) and rinse it thoroughly with water and soap. As the bean hopper is made of clear polymer, use only liquid detergent (free of abrasive components) and soft sponge. Before reinstalling the beans hopper back to its position, make sure it is dried thoroughly. To ensure great coffee taste, clean the bean hopper periodically.

Cleaning the grinding chamber and grinding parts

Follow the instruction below for grinding chamber and grinding parts cleaning:

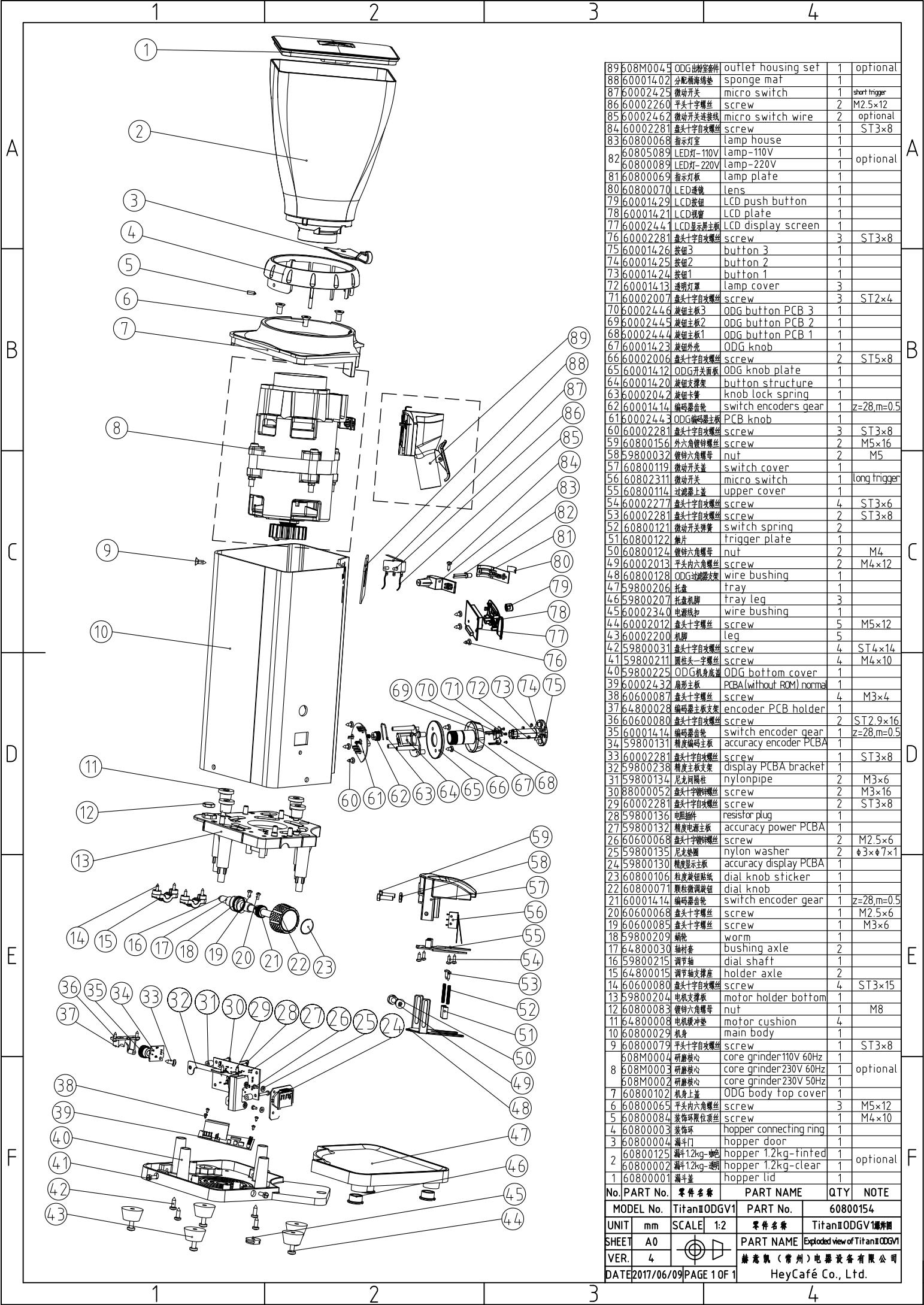
 <p>STEP1 After removing the hopper and before start disconnecting screws first identify the 3 top grind-stone holder's screws (marked with the number 1 on the grinders' cover)</p>	 <p>STEP2 Disconnect the top grindstone holder screws (3 screws) using the supplied 3mm Allen key. Pull out the upper grindstone holder</p>	 <p>STEP3 (Step 3 should be performed by certified technician only!) Use a screw driver and nuts spanner to release the bottom knife holder. Pull out the knife holder. Discover the grinding house</p>	 <p>STEP4 Use a brush, a dry cloth, and a vacuum cleaner to clean the grinding chamber thoroughly.</p>
 <p>STEP 5 Use a brush, a dry cloth, and a vacuum cleaner to clean the upper and lower grindstone thoroughly.</p>			

- Do not use sharp objects to scrape coffee residue off of the grindstones.
- Examine both of the grindstones' condition and replace them if necessary.
- The replacement and assembly of a new set of grindstones is a delicate task.

Only skilled technical personnel should be allowed to perform grindstone removal and assembly. After all cleaning and replacing tasks are through make sure to assemble all of the parts and safety screws the same way as they were disconnected. If anything does not fit back together or there are some leftover parts, do not attempt to operate the appliance, call for the assistance of your technician.

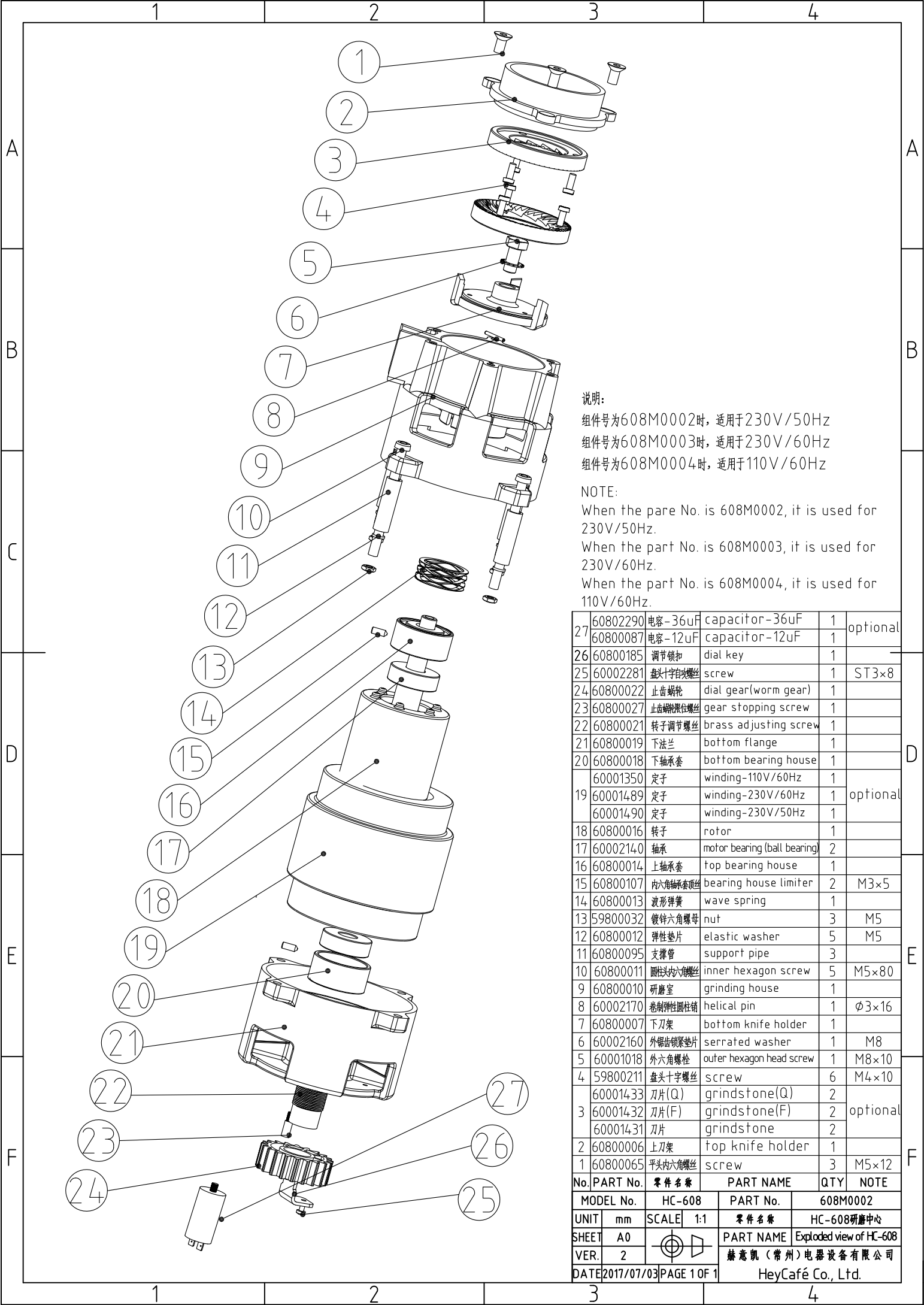
To ensure long lasting grinder and great fresh taste of coffee, the cleaning procedure as described above should be repeated routinely and at least once per month or as necessary according the grinder's usage and quality of beans.

END



89	608M004.5	ODG出粉室套件	outlet housing set	1	optional
88	60001402	分配棉海绵垫	sponge mat	1	
87	60002425	微动开关	micro switch	1	short trigger
86	60002260	平头十字螺丝	screw	2	M2.5x12
85	60002462	微动开关连接线	micro switch wire	2	optional
84	60002281	鑫头十字自攻螺丝	screw	1	ST3x8
83	60800068	指示灯室	lamp house	1	
82	60805089	LED灯-110V	lamp-110V	1	optional
	60800089	LED灯-220V	lamp-220V	1	
81	60800069	指示灯板	lamp plate	1	
80	60800070	LED透镜	lens	1	
79	60001429	LCD按钮	LCD push button	1	
78	60001421	LCD视窗	LCD plate	1	
77	60002441	LCD显示屏主板	LCD display screen	1	
76	60002281	鑫头十字自攻螺丝	screw	3	ST3x8
75	60001426	按钮3	button 3	1	
74	60001425	按钮2	button 2	1	
73	60001424	按钮1	button 1	1	
72	60001413	透明灯罩	lamp cover	3	
71	60002007	鑫头十字自攻螺丝	screw	3	ST2x4
70	60002446	按钮主板3	ODG button PCB 3	1	
69	60002445	按钮主板2	ODG button PCB 2	1	
68	60002444	按钮主板1	ODG button PCB 1	1	
67	60001423	按钮外壳	ODG knob	1	
66	60002006	鑫头十字自攻螺丝	screw	2	ST5x8
65	60001412	ODG开关面板	ODG knob plate	1	
64	60001420	按钮支架架	button structure	1	
63	60002042	按钮卡簧	knob lock spring	1	
62	60001414	编码器齿轮	switch encoders gear	1	z=28,m=0.5
61	60002443	ODG编码器主板	PCB knob	1	
60	60002281	鑫头十字自攻螺丝	screw	3	ST3x8
59	60800156	外六角镀锌螺丝	screw	2	M5x16
58	59800032	镀锌六角螺母	nut	2	M5
57	60800119	微动开关盖	switch cover	1	
56	60802311	微动开关	micro switch	1	long trigger
55	60800114	过滤器上盖	upper cover	1	
54	60002277	鑫头十字自攻螺丝	screw	4	ST3x6
53	60002281	鑫头十字自攻螺丝	screw	2	ST3x8
52	60800121	微动开关弹簧	switch spring	2	
51	60800122	触片	trigger plate	1	
50	60800124	镀锌六角螺母	nut	2	M4
49	60002013	平头内六角螺丝	screw	2	M4x12
48	60800128	ODG过滤器支架	wire bushing	1	
47	59800206	托盘	tray	1	
46	59800207	托盘机脚	tray leg	3	
45	60002340	电源线扣	wire bushing	1	
44	60002012	鑫头十字螺丝	screw	5	M5x12
43	60002200	机脚	leg	5	
42	59800031	鑫头十字自攻螺丝	screw	4	ST4x14
41	59800211	圆柱头一字螺丝	screw	4	M4x10
40	59800225	ODG机身底座	ODG bottom cover	1	
39	60002432	扇形主板	PCBA(without ROM) normal	1	
38	60600087	鑫头十字螺丝	screw	4	M3x4
37	64800028	编码器主板支架	encoder PCB holder	1	
36	60600080	鑫头十字自攻螺丝	screw	2	ST2.9x16
35	60001414	编码器齿轮	switch encoder gear	1	z=28,m=0.5
34	59800131	精度编码器主板	accuracy encoder PCBA	1	
33	60002281	鑫头十字自攻螺丝	screw	1	ST3x8
32	59800238	精度主板支架	display PCBA bracket	1	
31	59800134	尼龙隔柱	nylon pipe	2	M3x6
30	88000052	鑫头十字镀锌螺丝	screw	2	M3x16
29	60002281	鑫头十字自攻螺丝	screw	2	ST3x8
28	59800136	电阻插件	resistor plug	1	
27	59800132	精度电源主板	accuracy power PCBA	1	
26	60600068	鑫头十字镀锌螺丝	screw	2	M2.5x6
25	59800135	尼龙垫圈	nylon washer	2	φ3xφ7x1
24	59800130	精度显示主板	accuracy display PCBA	1	
23	60800106	粒度微调贴纸	dial knob sticker	1	
22	60800071	颗粒微调按钮	dial knob	1	
21	60001414	编码器齿轮	switch encoder gear	1	z=28,m=0.5
20	60600068	鑫头十字螺丝	screw	1	M2.5x6
19	60600085	鑫头十字螺丝	screw	1	M3x6
18	59800209	蜗轮	worm	1	
17	64800030	轴衬套	bushing axle	2	
16	59800215	调节轴	dial shaft	1	
15	64800015	调节轴支撑座	holder axle	2	
14	60600080	鑫头十字自攻螺丝	screw	4	ST3x15
13	59800204	电机支撑板	motor holder bottom	1	
12	60800083	镀锌六角螺母	nut	1	M8
11	64800008	电机缓冲垫	motor cushion	4	
10	60800029	机身	main body	1	
9	60800079	平头十字自攻螺丝	screw	1	ST3x8
8	608M0004	研磨核心	core grinder110V 60Hz	1	optional
	608M0003	研磨核心	core grinder230V 60Hz	1	optional
	608M0002	研磨核心	core grinder230V 50Hz	1	optional
7	60800102	机身上盖	ODG body top cover	1	
6	60800065	平头内六角螺丝	screw	3	M5x12
5	60800084	装饰限位顶丝	screw	1	M4x10
4	60800003	装饰环	hopper connecting ring	1	
3	60800004	漏斗门	hopper door	1	
2	60800125	漏斗1.2kg-冲吧	hopper 1.2kg-tinted	1	optional
	60800002	漏斗1.2kg-透明	hopper 1.2kg-clear	1	optional
1	60800001	漏斗盖	hopper lid	1	

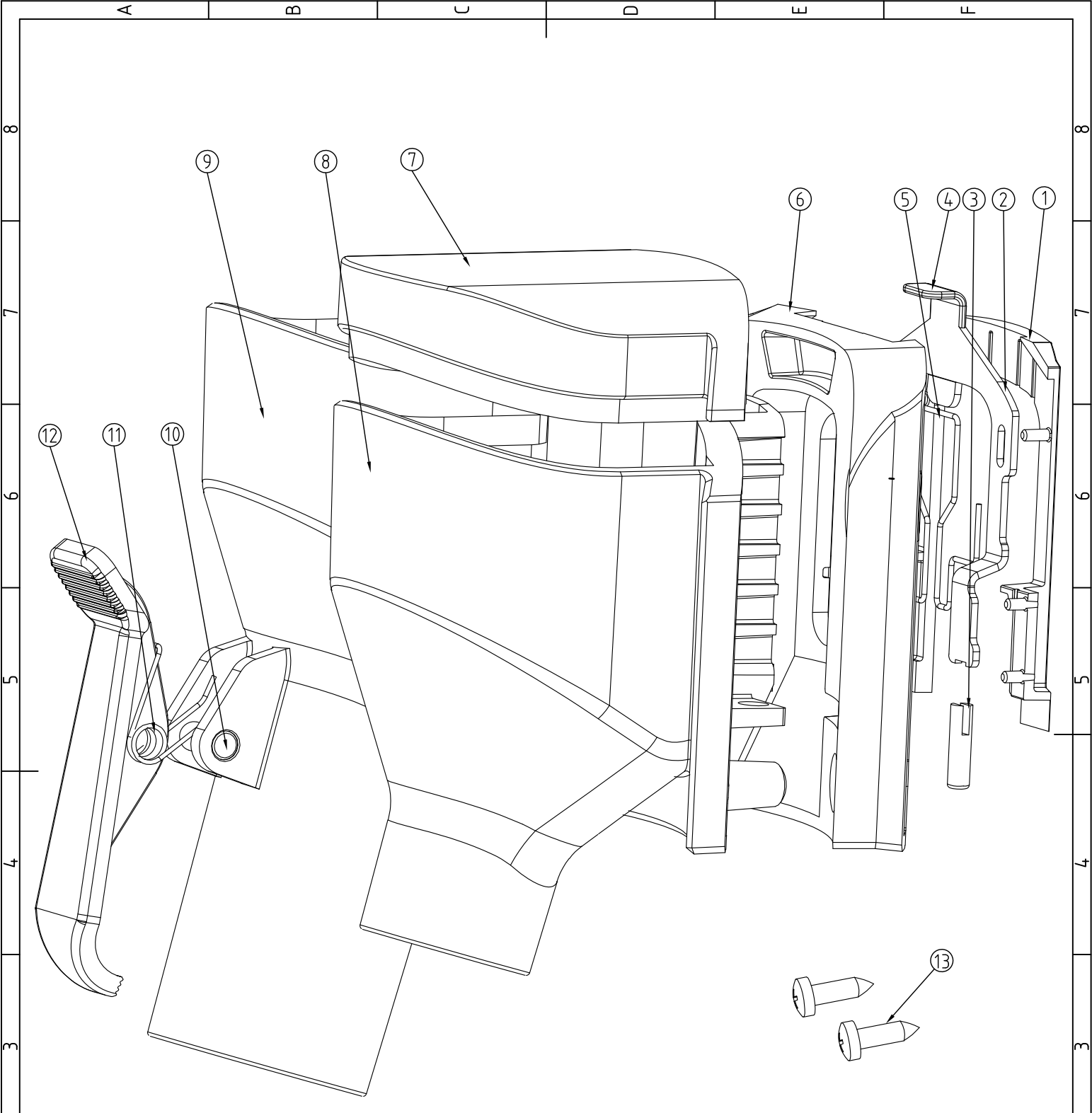
No.	PART No.	零件名称	PART NAME	QTY	NOTE
MODEL No.		TitanIIODGV1	PART No.	60800154	
UNIT	mm	SCALE	1:2	零件名称 TitanIIODGV1爆炸图	
SHEET	A0	PART NAME		Exploded view of TitanIIODGV1	
VER.	4	赫志凯(常州)电器设备有限公司			
DATE	2017/06/09	PAGE	1 OF 1	HeyCafé Co., Ltd.	



说明:
 组件号为608M0002时, 适用于230V/50Hz
 组件号为608M0003时, 适用于230V/60Hz
 组件号为608M0004时, 适用于110V/60Hz

NOTE:
 When the part No. is 608M0002, it is used for 230V/50Hz.
 When the part No. is 608M0003, it is used for 230V/60Hz.
 When the part No. is 608M0004, it is used for 110V/60Hz.

27	60802290	电容-36uF	capacitor-36uF	1	optional
	60800087	电容-12uF	capacitor-12uF	1	
26	60800185	调节锁扣	dial key	1	
25	60002281	盘头十字改锥	screw	1	ST3×8
24	60800022	止齿蜗轮	dial gear(worm gear)	1	
23	60800027	止齿蜗轮限位螺丝	gear stopping screw	1	
22	60800021	转子调节螺丝	brass adjusting screw	1	
21	60800019	下法兰	bottom flange	1	
20	60800018	下轴承套	bottom bearing house	1	
	60001350	定子	winding-110V/60Hz	1	
19	60001489	定子	winding-230V/60Hz	1	optional
	60001490	定子	winding-230V/50Hz	1	
18	60800016	转子	rotor	1	
17	60002140	轴承	motor bearing (ball bearing)	2	
16	60800014	上轴承套	top bearing house	1	
15	60800107	内六角轴承套限位	bearing house limiter	2	M3×5
14	60800013	波形弹簧	wave spring	1	
13	59800032	镀锌六角螺母	nut	3	M5
12	60800012	弹性垫片	elastic washer	5	M5
11	60800095	支撑管	support pipe	3	
10	60800011	圆柱头内六角螺丝	inner hexagon screw	5	M5×80
9	60800010	研磨室	grinding house	1	
8	60002170	卷制弹性圆柱销	helical pin	1	φ3×16
7	60800007	下刀架	bottom knife holder	1	
6	60002160	外锯齿锁紧垫片	serrated washer	1	M8
5	60001018	外六角螺栓	outer hexagon head screw	1	M8×10
4	59800211	盘头十字螺丝	screw	6	M4×10
	60001433	刀片(Q)	grindstone(Q)	2	
3	60001432	刀片(F)	grindstone(F)	2	optional
	60001431	刀片	grindstone	2	
2	60800006	上刀架	top knife holder	1	
1	60800065	平头内六角螺丝	screw	3	M5×12
No.	PART No.	零件名称	PART NAME	QTY	NOTE
MODEL No.	HC-608	PART No.	608M0002		
UNIT	mm	SCALE	1:1	零件名称	HC-608研磨中心
SHEET	A0			PART NAME	Exploded view of HC-608
VER.	2			赫志凯(常州)电器设备有限公司	
DATE	2017/07/03	PAGE	1 OF 1	HeyCafé Co., Ltd.	



608M0045 suit for Titan II ODG 2IN1 outlet set, please find the part list below:

13	60002278	平头十字螺钉	screw	2	M4×12
12	60001707	纸袋夹器手柄	bag clipper	1	
11	60001709	手柄弹簧	spring torsion	1	
10	60002082	平头螺丝	screw	1	M4×12
9	60001717	纸袋出口式出粉室	ODG outlet bag	1	
8	60001715	普通出口式出粉室	ODG outlet short	1	

608M0044 suit for Titan II ODG outlet set(bag), please find the part list below:

13	60002278	平头十字螺钉	screw	2	M4×12
12	60001707	纸袋夹器手柄	bag clipper	1	
11	60001709	手柄弹簧	spring torsion	1	
10	60002082	平头螺丝	screw	1	M4×12
9	60001717	纸袋出口式出粉室	ODG outlet bag	1	
7	60001714	出粉室盖	ODG outlet cover	1	
6	60801200	出粉室连接板	powder outlet adaptor	1	

608M0043 suit for Titan II ODG outlet set(esp), please find the part list below:

13	60002278	平头十字螺钉	screw	2	M4×12
8	60001715	普通出口式出粉室	ODG outlet short	1	
7	60001714	出粉室盖	ODG outlet cover	1	
6	60801200	出粉室连接板	powder outlet adaptor	1	
5	60001701	安全保护轴	safety wire	1	
4	60001028	橡胶圈	rubber pipe	1	
3	60001001	压板定位轴	locking pin	1	
2	60001029	出粉室固定压板	outlet lock	1	
1	60001027	出粉室固定压板盖	outlet lock cover	1	

No.	PART No.	零件名称	PART NAME	QTY	NOTE
13	60002278	平头十字螺钉	screw	2	M4×12
12	60001707	纸袋夹器手柄	bag clipper	1	
11	60001709	手柄弹簧	spring torsion	1	
10	60002082	平头螺丝	screw	1	M4×12
9	60001717	纸袋出口式出粉室	ODG outlet bag	1	
7	60001714	出粉室盖	ODG outlet cover	1	
6	60801200	出粉室连接板	powder outlet adaptor	1	
5	60001701	安全保护轴	safety wire	1	
4	60001028	橡胶圈	rubber pipe	1	
3	60001001	压板定位轴	locking pin	1	
2	60001029	出粉室固定压板	outlet lock	1	
1	60001027	出粉室固定压板盖	outlet lock cover	1	

No.	PART No.	零件名称	PART NAME	QTY	NOTE
MODEL No.		Titan II ODG	PART No.	608M0045	
UNIT		mm	SCALE	2:1	
SHEET		A3	PART NAME		2IN1 outlet set
VER.		3	PART NAME		2IN1 outlet set
DATE		2017/01/09	HeyCafé Co., Ltd.		

1
2
3
4
5
6
7
8

1
2
3
4
5
6
7
8

A

B

C

D

E

F