

HC-880

Bulk Coffee Grinder

OPERATING & SERVICE MANUAL



Designed in EU.✎

Produced by HeyCafé Co., Ltd. 赫意凯 (常州) 电器设备有限公司✎

Building #6, #2 Tenglong Rd, Wujin Economic Development Zone, Jiangsu, 213161 China✎

WARNINGS

- 1 This Grinder is **not** intended for use by persons (including children) with reduced physical, sensory or mental capabilities, or lack of experience and knowledge, unless they have been given supervision or instruction concerning use of the Grinder by a person responsible for their safety.
- 2 Children should be supervised to ensure that they do not play with the Grinder.
- 3 Care is needed when handling cutting blades during cleaning.
- 4 If the supply cord is damaged, it must be replaced by the manufacturer or its service agent or a similarly qualified person in order to avoid a hazard.



Correct Disposal of this product

This marking indicates that this product should not be disposed with other household wastes throughout the EU. To prevent possible harm to the environment or human health from uncontrolled waste disposal, recycle it responsibly to promote the sustainable reuse of material resources. To return your used device, please use the return and collection systems or contact the retailer where the product was purchased. They can take this product for environmental safe recycling.

Warranty Information

The manufacturer provides warranty in accordance with the legislation of the customer's own country of residence, with a minimum of 1 year (Germany: 2 years), starting from the date on which the Grinder is sold to the end user. The warranty only covers defects in material or workmanship. The repairs under warranty may only be carried out by an authorized service center. When making a claim under the warranty, the original bill of purchase (with purchase date) must be submitted.

The warranty will not apply in cases of:

- Normal wear and tear
- Incorrect use, e.g. overloading of the Grinder, use of non-approved accessories
- Use of force, damage caused by external influences
- Damage caused by non-observance of the user manual, e.g. Connection to an unsuitable mains supply or non-compliance with the installation instructions
- Partially or completely dismantled Grinders

TABLE of CONTENTS

1) Preface.....	4.
2) Technical Specifications.....	4.
3) General Description.....	5.
4) Unpacking and installation.....	5.
5) Operation.....	6.
6) Safety devices.....	7.
7) Safety instructions.....	7.
8) Maintenance and service.....	8.
9) Cleaning.....	10.

1) PREFACE

Congratulations for purchasing the **HC-880** grocery bulk grinder. The **HC-880** is a commercial Grinder to be used in groceries, coffee shops, coffee roasters, espresso bars, hotels and restaurants. The **HC-880** grind's whole been coffee to fill up coffee bags with variable, user-selectable, super fine to course coffee powder.

Read this manual from cover to cover before using the Grinder as it contains important instructions for the safety, operation, and maintenance of the Grinder. Keep the manual in a safe place for future use and reference.

The manufacturer reserves the right to modify the grinder and the manual accordingly.

2) TECHNICAL SPECIFICATIONS of **HC-880**

Dimensions:

Height: **660mm**, Width: 180mm, depth: 425mm

Weight: 26Kg

Disks diameter: 84mm

Beans hopper's capacity: 2.0Kg Coffee beans

Electrical Specifications (single phase):

220V/50Hz Maximum current 4.5 Ampere

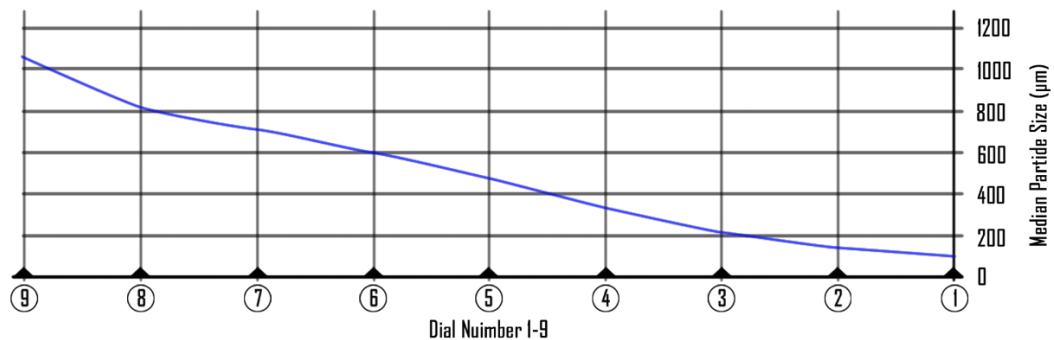
220V/60Hz Maximum current 5 Ampere

Grinding capacities:

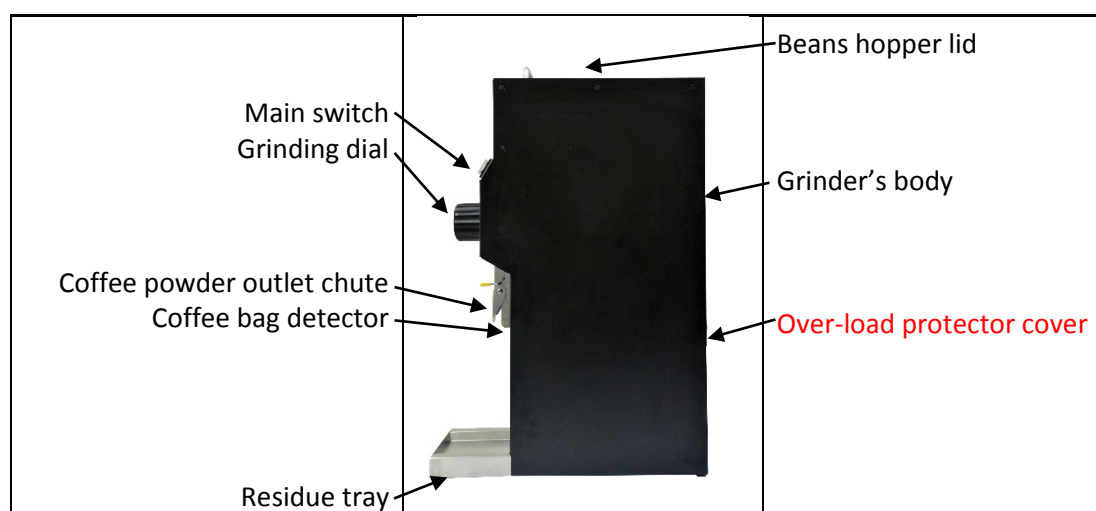
>450gr/min. @ #3 setting (espresso)

Powder coarseness:

80micron @#1setting ->1000micron @#9 setting



3) General Description



4) UNPACKING AND INSTALLATION:

Warning: All grinder's technical handling operations such as installation, maintenance, or service should be performed by certified personnel or by your local dealer.

1. After opening grinder's package, make sure that the Grinder is intact and that there is no visible damage. If there is any doubt, DO NOT continue the installation procedure and contact your local dealer for further assistance.
2. Unpack the product carefully. For your convenience we suggest storing all packaging materials where they can be used in the future, whenever the Grinder's transportation is necessary.
3. Place the grinder on a stable flat counter in a dry area away from water or water splashes.
4. Open hopper's beans lid and visually inspect that there no foreign objects of any kind remove any foreign object accordingly.
5. Install the grinder's powder residue tray.
6. Before plugging in the electrical cord, make sure:
 - a) The Grinder voltage and frequency rating (according to the back side label) is the same as the supply mains.
 - b) The wall socket is fitted with an efficient ground contact.
 - c) DO NOT plug the Grinder into the supply mains if a ground system is not available in mains socket, socket should in compliance with national/local electrical codes.
 - d) IT IS COMPULSORY TO GROUND THE GRINDER. The manufacturer cannot be held responsible in the event that this obligatory requirement was not complied.
 - f) The power consumption of the Grinder (according to the back side label) is consistent with the relevant wall socket capacity.
 - g) The wall socket is protected against short-outs and power surges.
 - h) Do not: use extension cables, plug adapters for multiple sockets, or make shift connections.
7. Plug in the Grinder.

5) OPERATION

Operation controls



Fig 5-1

1. Main Switch is a 3-way switch with Off, ON and Run positions (Fig 5-1).
2. Grind setting knob with 9 preset positions (at grocery mode) or 18 positions (at professional mode). Turn the grind setting clockwise in order to make a finer grinding or counterclockwise for coarser grinding. At finest position the grinder can reach 80micron of fine powder, at coarsest position the grinder can reach over 1000micron (fig 5-1).
3. Bag detection switch, is located behind the powder chute and only when this switch is activated grinding is enabled.

First time operation (to perform once after unpacking):

1. Plug-in the power cable into wall socket.
2. Slip an empty bag under the powder chute and rest it freely on the tray (make sure that the bag open edge is placed higher than the bag detection switch).
3. Set the grind setting knob on coarsest position (#9).
4. DO NOT PLACE COFFEE BEANS INTO THE BEANS HOPPER YET.
5. Start the grinder by switching the main switch to RUN let the grinder run for few minutes and gradually while running change the grind setting step by step from #9 all the way to #1. And then return (step by step) to #9. Repeat this cycle few times while the grinder is running and listen for any abnormal noise coming from the grinder throughout the process.
6. For any abnormal or excessive noise refer to your local dealer.

Grinding coffee:

1. After the completion of 'first time operation' the grinder is ready to be used.
2. Fill the hopper with coffee beans and place an empty coffee powder bag under the powder's chute. Set the desired coarseness and turn the main switch to RUN.
3. The grinder will not run as long as a coffee powder bag is not presented under powder's chute.
4. Ensure using a bag which is in same volume (or bigger) than the grinded beans
5. While grinding observe the powder's flow into the bag and periodically (few times per minute) use the cleaning/shaking handle to improve the powder's flow into the bag.
6. Make sure that the bag is entirely open and without wrinkles, assist the good incoming flow through it. Avoid blocking or bending the bag
7. Stop the grinding by turning the main switch to off position, or by removing the full powder bag after the grinding is complete and no more beans left in the hopper.

Remark about operation intervals:

It is a normal occurrence that during long grinding periods the grinding chamber will warm up. In order to achieve best grinding results, it is recommended to grind coffee in short intervals of no longer than 15 minutes grinding per period of 20 minutes.

6) SAFETY DEVICES

Overload protection:

The grinder's motor is equipped with a semi-automatic overload protection device which cutoff the motor's power automatically at over current condition. The overload protector is located on the back of the grinder behind the round lid.

In the event that the overload protection was tripped as a result of technical problem (e.g.: jammed blades, worn out bearings, foreign object in grinding chamber, etc.) the grinder's main switch should be turned off and the main power plug must be disconnected. Allow the grinder to cool down before any further maintenance. For further handling of the device contact your local service provider.

In the event that the overload protection was tripped as a result of a long continuous operation allow the grinder to cool down. Reset the semi-automatic protector by pressing the protector's button (uncover the lid first).

On the first operation after resetting a tripped over-current protector observe the grinding quality and noise level, and if there are any irregularities shut down the grinder and call a certified technician for a complete analysis of the Grinder.

Beans conveyor and grinding chamber safety cover:

The grinding chamber can be a hazardous area if the proper precautions aren't observed. The beans hopper is equipped with hands and fingers safety protector.

- Never remove the safety protector while the **HC-880** grinder is plugged in.
- Never use a grinder that is not equipped with protector or if the protector is broken

Bag presence switch:

A bag presence switch was installed In order to avoid foreign bodies plunged into the grinding house from powder's outlet direction and in order to avoid accidental grind of beans without collecting bag for the powder.

Never operate the **HC-880** grinder when the bag presence switch is disassembled or bypassed

7) SAFETY INSTRUCTIONS

1. NEVER OPERATE THE GRINDER IF THE BEAN HOPPER IS NOT FULLY SECURED TO THE GRINDER'S BODY. BEFORE REMOVING THE HOPPER FOR ANY REASON MAKE SURE TO DISCONNECT THE POWER SUPPLY.
2. NEVER CLEAR FOREIGN OBJECTS FROM THE BEANS CONVEYOR OR BEANS HOPPER WHEN THE GRINDER IS PLUGGED INTO A POWER SOCKET.
3. BEFORE ANY MAINTENANCE, EVEN FOR CLEANING, ALWAYS DISCONNECT THE POWER SUPPLY.
4. Never attempt to insert your fingers or any foreign objects into the grinding chamber or blades.
5. Be aware that grinding blades continue rotating for a short while after switching OFF the Grinder and the grinding operation has ended.
6. In the event that the Grinder has a malfunction or the blades need to be replaced, do not attempt to service the Grinder by yourself.
7. Do not change or tamper with the Grinder.
8. Do not use the Grinder barefoot or if your hands or feet are damp.
9. Do not use the cable wire to pull and disconnect the power plug.
10. Always keep the Grinder dry (internally and externally).
11. Do not regrind coffee powder

12. Do not attempt to use the grinder grinding anything else other than roasted coffee beans.

8) MAINTENANCE AND SERVICE

Warning: All Grinder's technical handling operations, such as installation, maintenance, or service should be performed by certified personnel or by your local dealer.

Check the state of the grinding blades periodically (approximately every 100kg of grinded coffee). Good condition blades will result in a high quality grind and prevent the Grinder's over-heating. Replace grinding blades every 1,000kg of grinded coffee (with normal hardness blades).

The noise level of a grinder is a good indicator of its general condition. Be aware of the Grinder's noise level. In case the noise level is higher than normal or irregular noises are coming from within the Grinder, get certified personnel to perform an overall check of the Grinder.

BEFORE ANY MAINTENANCE OR DISASSEMBLY PROCEDURE MAKE SURE THE GRINDER IS EMPTY OF COFFEE BEANS AND CLEAN OF POWDER

Removing the grind setting knob:

1. Turn the grind knob to finest grinding position. (fig 8.1)
2. Use a #3 Allen key (provided with the grinder) to loosen the knob securing screws (fig 8.2)
3. Pull out the knob (fig 8.2)
4. After removing the grind setting knob, please note the index pin below and the relative position of the black marks on the grinding body and on the internal dial knob, if no further setting is required refrain from changing the position of the internal knob (fig 8.3)



Fig 8.1
Finest position



Fig 8.2
loosen the securing screws



Fig 8.3
index pin and markers

Alternating preset knob's mode:

Inside the grind setting knob there are 2 stainless steel disks which are working against an index pin on the grinding body to govern the preset grinding positions.

Grocery Mode disk:

- 9 preset position, from finest to coarsest grinding. Please refer to the grinding graph on paragraph 2 for grinding coarseness particle size in the different 1-9 settings.
- The grocery mode plate should only be assembled in one way. Where the spacing between the dimples is getting bigger clockwise should be faced up.

Professional Mode disk:

- 18 preset positions with even spacing between the positions
- The Professional mode disk can be assembled regardless which of the faces is up.



Fig 8.4
Assembled Knob (Grocery mode)



fig 8.5
Disassembled knob

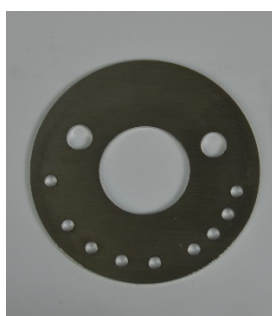


Fig 8.6
Grocery (9 dimples)



Fig 8.7
Professional (18 dimples)

Readjustment of grind setting

The **HC-880** was factory set for different types of coffee powders, from finest Turkish coffee to coarsest hand filter coffee. However, in course of time or after thorough cleaning procedures or disks replacement, some changes in tuning may be required. If you feel your grinder is out of tune (either a squeaking noise or grind powder is too coarse at the finest setting) please run through the following procedure.

1. Release the and pull the main grinding knob out.
2. The steel internal knob is exposed out now.
3. Note the current steel knob position (the relative position between the marker on the knob to the marker on the main body)
4. Use a flat screw driver to slightly turn the steel knob clockwise in order to make the presetting finer or counterclockwise in order to readjust the grinder coarser
5. Test the new setting, by running the grinder without coffee beans first. Then if no an noise from on the new setting position use some coffee beans to test the new position. Readjust accordingly.
6. Turn OFF the grinder, re-assemble the knob on Turkish coffee position, tighten the screw and place the Logo cover back into its position.
7. Check the grinder by grinding coffee beans to various types of coffee powder and repeat the entire process if necessary.

9) CLEANING

BEFORE ANY CLEANING ROUTINE GRIND AND MAKE SURE NO BEANS OR POWDER ARE IN THE GRINDER.

DISCONNECT THE GRINDER POWER SUPPLY.

NEVER USE RUNNING WATER FOR THE CLEANING PROCEDURE.

USE ONLY PERFECTLY CLEAN CLOTHS OR BRUSHES TO CLEAN THE GRINDER.

DO NOT USE ABRASIVE CLEANING PRODUCTS AS THEY MAY SCRATCH GRINDER'S FINISHING.

Cleaning the bean hopper

1. Release the top cover screws (4 screws on each top right and left side of the grinder)
2. Release the 2 beans hopper screws (located on its back side)
3. Pull out the beans hopper and rinse it thoroughly with water and soap.
4. As the beans hopper is made of ABS, use only liquid detergent (free of abrasive components) and soft sponge.
5. Before reinstalling the beans hopper, make sure it is thoroughly dried.

Cleaning the grinding chamber

Before starting the thorough cleaning procedure of the **HC-880** read the complete set of instructions.

1. Refer to the previous paragraph 8 in order to disassemble the grinding knob
2. Refer to the below steps 1-8 in order to disassemble the grinding core
 - a. Use a cross screw driver to release the 4 screws that secure powder chute to the front cover.
 - b. Use a flat screw driver to release the 4 screws of front cover and pull it gently out.
 - c. Make a note and mark the wiring connection order with the main switch and then release the 4 wires
 - d. Use a #3 Allen key to release the main grinding house (4 screws)
 - e. Pull out the entire grinding house including the internal grinding knob.
 - f. Pull out the bearing holder
 - g. Pull out the disk holder with the beans' conveyor. Pay attention to the spring at the end of the beans conveyor, it should be kept for the after cleaning assembly process.
3. Reaching Step 8 below is the base situation for cleaning and replacing disks.
4. Use brush and cloths to clean all the parts thoroughly
 - a. Do not use sharp objects to scrape coffee residue off of the blades.
 - b. Examine both of the blades' condition and replace them as necessary.
 - c. The replacement and assembly of a new set of blades is a delicate task. Only skilled technical personnel should be allowed to perform blade removal and assembly.
 - d. Always use an original spare parts made by the manufacturer
5. Clean the exposed grinding area.
6. Before re-assembling the parts lightly grease the motor shaft with food grade grease.
7. Make your assembly way back in opposite order (steps 9-5)
8. Before assembly the main knob check and if necessary recalibrate Grinder's tuning (refer to ADJUSTMENTS OF GRINDING OPERATION on paragraph 8)
9. After all cleaning and replacing tasks are through make sure to assemble all of the parts and safety screws the same way as they were disconnected. If anything does not fit back together or there are left over parts, do not attempt to operate the

Grinder, call for the assistance of your technician. Start working gradually and observe any irregular noise or behavior of the Grinder.

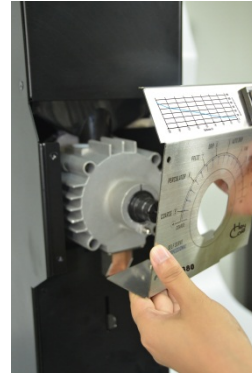
10. Advise with your local technical support for any irregular noise or grinding problems.



Step 1 -remove chute



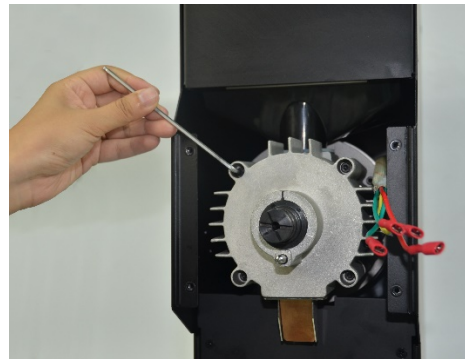
Step 2 – remove front cover step



Step 3-mark and disconnect wires



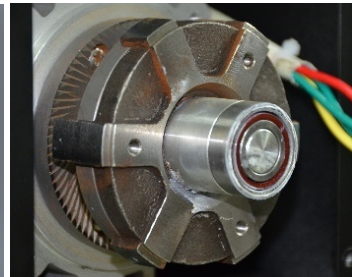
Step 4 note internal knob position



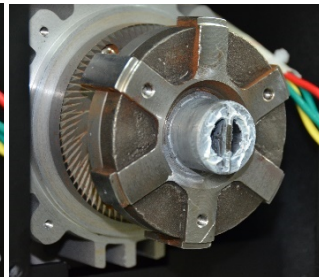
Step 5 – release grinding house



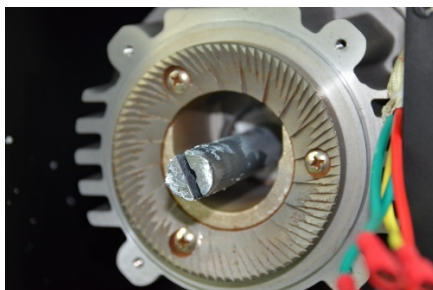
Step 6 -remove grinding house



Step 7 –remove the bearing cover



Step 8 -remove the shear key



Step 9 – remove the disk holder

A 'deeper' cleaning procedure should only be performed by a skilled technician.

To ensure long lasting grinder and great fresh taste of coffee, the cleaning procedure as described above should be repeated routinely and at least once per month or as necessary according the grinder's usage and quality of beans.

Add your remarks here:

No.	date	Event	remark

Important details and telephone numbers:

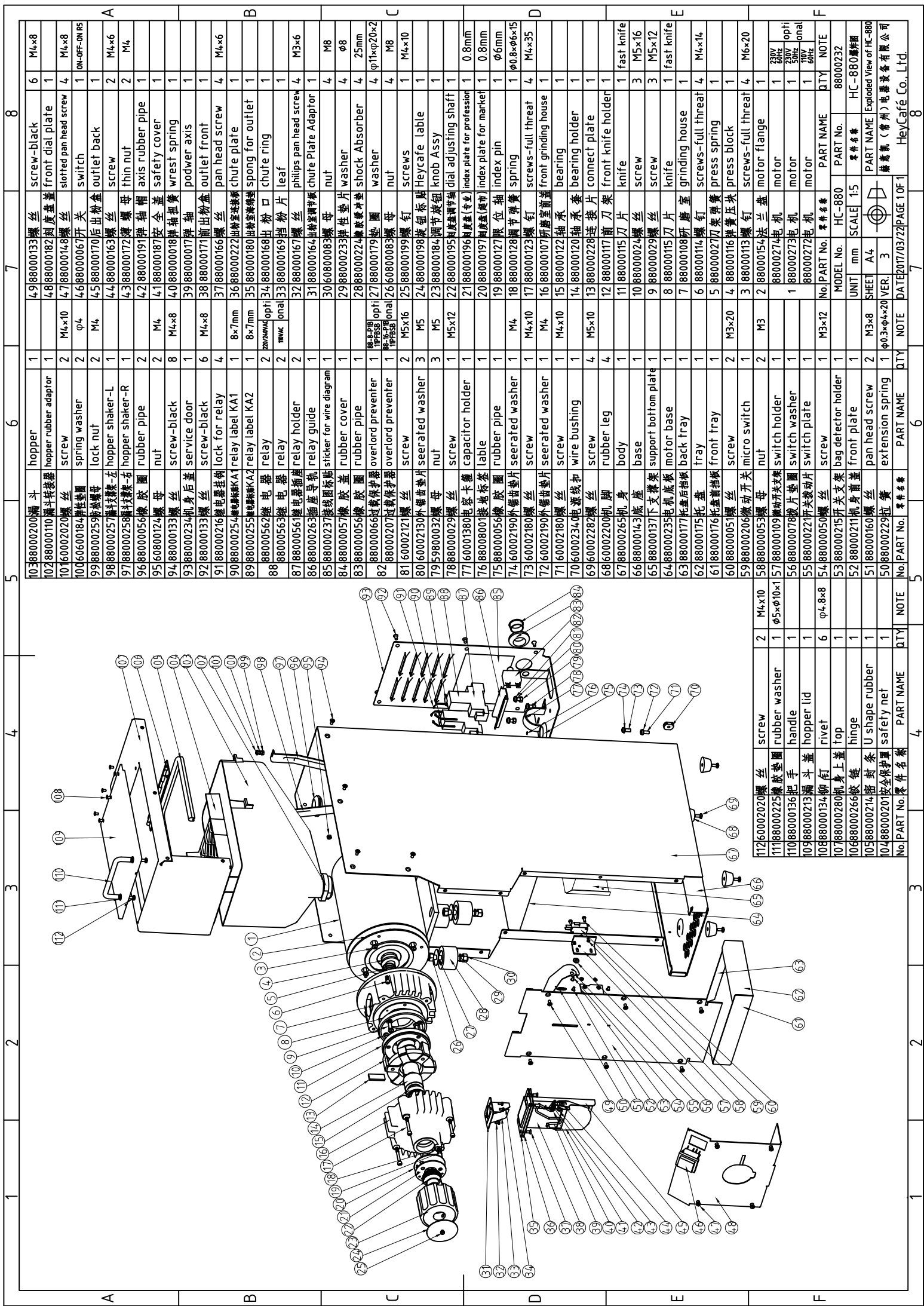
Local dealer address: _____

Telephone number: _____ Fax number: _____

Technician mobile number: _____ name: _____

Coffee beans supplier details: _____

Telephone number: _____ Fax number: _____



No.	PART No.	零件名称	PART NAME	QTY	NOTE
10388000200	漏斗	hopper		1	
10288000110	漏斗转接器	hopper rubber adaptor		1	
10160002020	螺丝	screw		2	M4×10
1006000184	弹性垫圈	spring washer		2	φ4
998800025	弹性螺母	lock nut		2	M4
988800025	漏斗转接器	hopper shaker-L		1	
978800025	漏斗转接器	hopper shaker-R		1	
9688000056	橡胶圈	rubber pipe		2	
9560800124	螺母	nut		2	M4
9488000133	螺丝	screw-black		8	M4×8
9388000234	机身后盖	service door		1	
9288000133	螺丝	screw-black		6	M4×8
9188000216	继电器控制	lock for relay		4	
9088000254	继电器KA1	relay label KA1		1	8×7mm
8988000255	继电器KA2	relay label KA2		1	8×7mm
8888000562	继电器	relay		2	20mm×4mm×opti
8788000563	继电器	relay		2	10mm×4mm×opti
8688000265	插座导线	relay holder		2	
8588000237	接线图标识	sticker for wire diagram		1	
8488000057	橡胶盖	rubber cover		1	
8388000056	橡胶圈	rubber pipe		1	
8288000666	橡胶保护罩	overload preventer		1	10mm×5mm×opti
8160002121	螺丝	overload preventer		26	10mm×6mm×opti
8060002130	外罩垫片	seerated washer		3	M5
7959800032	螺母	nut		3	M5
7888000029	螺丝	screw		1	M5×12
7760001380	电容卡箍	capacitor holder		1	
7688000800	接地垫圈	table		1	
7588000056	橡胶圈	rubber pipe		1	
7460002190	外罩垫片	seerated washer		1	M4
7360002180	螺丝	screw		1	M4×10
7260002190	外罩垫片	seerated washer		1	M4
7160002180	螺丝	screw		1	M4×10
706000234	电源线扣	wire bushing		1	
6960002282	螺丝	screw		4	M5×10
6860002200	机脚	rubber leg		4	
6788000265	机身	body		1	
6688000143	底座	base		1	
6588000137	支架	support bottom plate		1	
6488000235	电机底座	motor base		1	
6388000177	托盘后挡板	back tray		1	
6288000175	托盘	tray		1	
6188000176	托盘前挡板	front tray		2	
6088000055	螺丝	screw		1	M3×20
5988000206	微动开关	micro switch		1	
5888000055	螺母	nut		2	M3
5788000109	微动开关架	switch holder		1	
5688000079	垫片垫圈	switch washer		1	
5588000022	开关垫圈	switch plate		1	
5488000055	螺丝	screw		1	M3×12
5388000215	开关支架	bag detector holder		1	
5288000211	机身前盖	front plate		1	
5188000160	螺丝	pan head screw		2	M3×8
5088000272	拉簧	extension spring		1	φ0.3×φ4×20
No.	PART No.	零件名称	PART NAME	QTY	NOTE
11260002020	螺丝	screw		2	M4×10
11188000225	橡胶垫圈	rubber washer		1	φ5×φ10×1
11088000136	把手	handle		1	
10988000213	漏斗盖	hopper lid		1	
10888000134	铆钉	rivet		6	φ4.8×8
10788000280	机身底座	top		1	
10688000266	铰链	hinge		1	
10588000214	密封条	U shape rubber		1	
10488000201	安全保护装置	safety net		1	

No.	PART No.	零件名称	PART NAME	QTY	NOTE
49	88000133	螺丝	screw-black	6	M4×8
48	88000182	刻度盘盖	front dial plate	1	
47	88000148	螺丝	slotted pan head screw	4	M4×8
46	88000067	开关	switch	1	ON-OFF-ON RS
45	88000170	后出粉盒	outlet back	1	
44	88000163	螺丝	screw	2	M4×6
43	88000172	螺母	thin nut	2	M4
42	88000191	弹簧轴帽	axis rubber pipe	1	
41	88000187	安全罩	safety cover	1	
40	88000018	弹簧扣架	wrest spring	1	
39	88000017	轴	podwax axis	1	
38	88000171	前出粉盒	outlet front	1	
37	88000166	螺丝	pan head screw	4	M4×6
36	88000222	出粉室密封垫	chufe plate	1	
35	88000180	出粉室密封垫	spong for outlet	1	
34	88000168	出口	chufe ring	1	
33	88000169	垫片	leaf	1	
32	88000167	螺丝	philips pan head screw	4	M3×6
31	88000164	出粉室密封垫	chufe Plate Adaptor	1	
30	60800088	螺母	nut	4	M8
29	88000233	弹性垫片	washer	4	φ8
28	88000222	橡胶垫圈	shock Absorber	4	25mm
27	88000179	垫圈	washer	4	φ11×φ20×2
26	60800083	螺母	nut	4	M8
25	88000199	螺丝	screws	1	M4×10
24	88000198	旋钮底座	Heycafe lable	1	
23	88000184	调节按钮	knob Assy	1	
22	88000195	刻度盘轴套	dial adjusting shaft	1	
21	88000196	刻度盘(带字)	index plate for profession	1	0.8mm
20	88000197	刻度盘(不带字)	index plate for market	1	0.8mm
19	88000127	限位轴	index pin	1	φ6mm
18	88000128	调节弹簧	spring	1	φ0.8×φ6×15
17	88000123	螺钉	screws-full thread	4	M4×35
16	88000107	研磨室前盖	front grinding house	1	
15	88000122	轴承	bearing	1	
14	88000120	轴承套	bearing holder	1	
13	88000228	连接片	connect plate	1	
12	88000117	前刀架	front knife holder	1	
11	88000115	刀片	knife	1	fast knife
10	88000024	螺丝	screw	3	M5×16
9	88000029	螺丝	screw	3	M5×12
8	88000115	刀片	knife	1	fast knife
7	88000108	研磨室	grinding house	1	
6	88000114	螺钉	screws-full thread	4	M4×14
5	88000277	弹簧	press spring	1	
4	88000116	黄铜压块	press block	1	
3	88000113	螺钉	screws-full thread	4	M6×20
2	88000154	法兰盖	motor flange	1	
1	88000274	电机	motor	1	230V 60Hz
1	88000273	电机	motor	1	50V 60Hz
1	88000272	电机	motor	1	100V 60Hz