

TITAN II
Models ODG V1
On Demand Grinder



Designed in EU.

Produced by **HeyCafé Co.,Ltd.**

Building #6, #2 Tenglong Rd, Wujin Economic Development Zone, Jiangsu, 213161 China

WARNINGS

- 1 This appliance is not intended for use by persons (including children) with reduced physical, sensory or mental capabilities, or lack of experience and knowledge, unless they have been given supervision or instruction concerning use of the coffee grinder by a person responsible for their safety.
- 2 Children should be supervised to ensure that they do not play with the grinder.
- 3 Care is needed when handling cutting grindstones during cleaning.
- 4 If the supply cord is damaged, it must be replaced by the manufacturer or its service agent or a similarly qualified person in order to avoid a hazard.



Correct Disposal of this product

This marking indicates that this product should not be disposed with other household wastes throughout the EU. To prevent possible harm to the environment or human health from uncontrolled waste disposal, recycle it responsibly to promote the sustainable reuse of material resources. To return your used device, please use the return and collection systems or contact the retailer where the product was purchased. They can take this product for environmental safe recycling.

Warranty Information

The manufacturer provides warranty in accordance with the legislation of the customer's own country of residence, with a minimum of 1 year, starting from the date on which the grinder is sold to the end user.

The warranty covers defects in material or workmanship only.

The repairs under warranty may only be carried out by an authorized service centre. When making a claim under the warranty, the original bill of purchase (with purchase date) must be submitted.

The warranty will not apply in cases of:

- Normal wear and tear and/or incorrect use, e.g. overloading of the grinder or grinding any substance other than coffee beans.
- Usage of non-approved accessories or non-original spare parts.
- Use of force, damage caused by external influences
- Damage caused by nonobservance of the user manual, e.g. connection to a non-suitable mains supply or non-compliance with the installation instructions
- Partially or completely dismantled appliances

TABLE of CONTENTS

1) Preface.....4.

2) Technical Specifications4.

3) General Description4.

4) Unpacking and installation5.

5) Operation for V1 models.....6.

6) Safety devices.....8.

7) Safety instructions.....9.

8) Maintenance and service.....9.

9) Cleaning9.

10) Remarks and important details.....11.

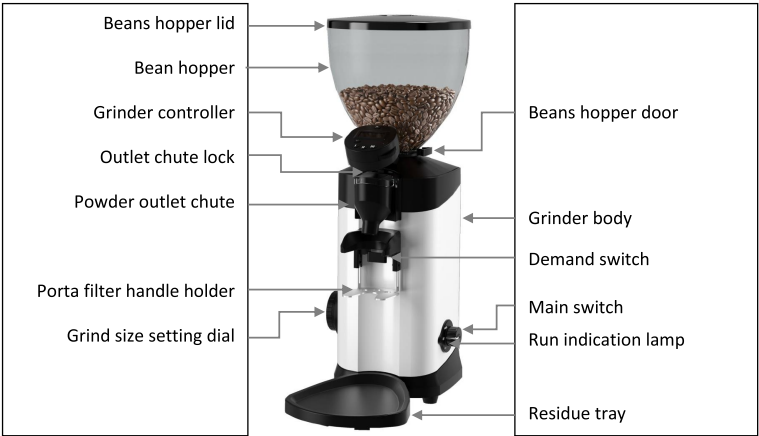
1) PREFACE

Congratulations for purchasing the Titan Espresso ‘On Demand Grinder’. The Titan is a commercial grinder to be used in coffee shops, espresso bars, hotels, restaurants, etc. The Titan grinder grinds whole been roasted coffee into variable, user selectable (from super fine to coarse) coffee powder and will dose It to your espresso machine’s Porta Filter or any other type of container. Read this manual from cover to cover before using the grinder as it contains important safety, operation and maintenance instructions. Keep the manual in a safe place for future use and reference. The manufacturer reserves the right to modify from time to time the grinder and the manual accordingly.

2) TECHNICAL SPECIFICATIONS

Dimensions:
Height: 560mm
Width: 220mm
Length: 360mm
Weight: 10.5Kg
Burrs diameter: 64mm
Hopper capacity (whole beans): 1200gr
Electrical Specifications:
Voltage: 230V 50Hz/60Hz
(According grinder’s label)
Power: 350W
Duty Cycle: 3.5S ON/26S OFF
Grinding capacities (@Espresso setting):
2.5-3.0 gr/sec

3) General Description



4) UNPACK and INSTALLATION:

Warning: Grinder's entire technical handling operations such as installation, maintenance, or service should be performed by certified personnel or by your local dealer.

- After opening the box, make sure that the grinder is intact and that there is no visible damage. If there is any doubt, DONOT use the grinder and call your local dealer for further assistance.
- Unpack the carton box carefully. For your convenience we suggest storing all packaging materials where they can be used in the future, whenever the grinder's transportation is necessary.
- Place the grinder on a stable flat counter in a dry area away from water or water splashes.
- Fit the coffee residue tray into its specially designed housing in front of the grinder (Fig. 4.1).



Fig. 4.1

- Before installing the beans hopper, please take few seconds to identify the beans hopper, silicone ring and hopper's locking screw.
- Install the beans hopper firmly into its position on top of the body inside the top grindstone holder.
- Fasten the hopper to the grinder body by the locking screw. (Fig. 4.4) Make sure that the screw is inserted completely through the back hole on the hopper's hole.



Fig. 4.2



Fig. 4.3



Fig. 4.4

! The Hopper locking screw is a SAFETY DEVICE. Before removing the hopper disconnect electric power cord.

! Never try to operate the grinder if the beans' hopper is not fully secured in its position.

- Before plugging in the electrical cord, make sure:
 - The grinder voltage and frequency rating (according to the bottom cover label) is the same as the supply mains.
 - The wall socket is fitted with an efficient ground contact. DONOT plug the grinder into the supply mains if the ground system was not positively checked to be in compliance with current safety rules.
- ! IT IS COMPULSORY TO EARTH THE GRINDER. The manufacturer can not be held responsible if this regulation is not complied with.**
- The power/current consumption of the grinder (according to the backside label) is consistent with the capacity of the relevant main socket.

- The main socket is protected against short outs and power surges.
 - Do not use extension cables, plug adapters for multiple sockets, or make shift connections.
- Plug in the grinder.
- Upon first time operation, and before placing beans in to the hopper, visually check that the grindstone rotation direction is clockwise by switching the grinder ON for a few seconds.
- Should the rotation direction be wrong, do not use the grinder and contact your local dealer for further instructions.

5) OPERATION for V1 (electronic) models

Grinding coffee:

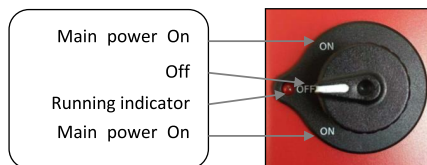


Fig. 5.1

The grinder is equipped with a 3-state power switch ON-OFF-ON. (Fig. 5.1).

Switch ON the grinder by turning the main knob to either directions from Off position to ON position.

Switch OFF the grinder by turning the knob back to point the OFF sign.

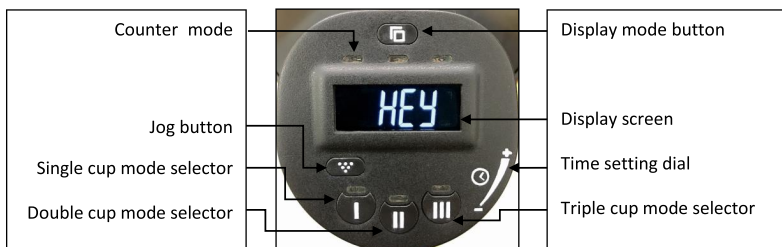


Fig. 5.2

Before start grinding coffee please spend few minutes to learn and understand the concept of the ODG V1 on demand grinding controller (Fig. 5.2)

Operational Modes:

The ODG V1 can be operated in 3 pre-dosed modes. Activating (or deactivating) each one of the modes, is achieved by single short pressing on the relative mode button. Once activated the LED will turn on.

- **Single cup mode**, in single cup mode press on the demand switch (Fig. 5.3) to activate the grinder release it to stop grinding or press till time elapses. (pre-dosed time change achieved by time set dial) Alternatively press the mode selector button continuously for longer than 2 sec, to grind the entire pre dosed without using the demand button.

- **Double cup mode**, in double cup mode press on the demand switch (Fig. 5.3) to activate the grinder release it to stop grinding or press till time elapses. (pre-dosed time change achieved by time set dial) Alternatively press the mode selector button continuously for longer than 2 sec, to grind the entire pre dosed without using the demand button.
- **Triple cup mode**, in triple cup mode press on the demand switch (Fig. 5.3) to activate the grinder release it to stop grinding or press till time elapses. (pre-dosed time change achieved by time set dial) Alternatively press the mode selector button continuously for longer than 2 sec, to grind the entire pre dosed without using the demand button.
- **JOG Button**, pressing the JOG button will allow the user to incrementally correct amount of coffee powder in the filter basket holder.

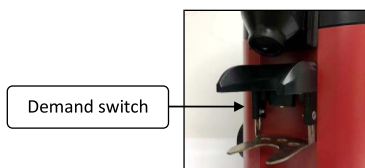


Fig. 5.3



Fig. 5.4

Programming grinding time for single/ double/ triple cup mode:

The grinder was factory set with time values for single/ double/ triple dose grinding periods. These preset values are obviously estimated, user should set his own times according the coffee grinding request. In general, **as the grind coarseness is coarser, the time to grind, same weight of coffee, is shorter**. Additionally, different type of coffee blends and coffee shops are requiring different dose size for their cups (6.5-9.5gr per single cup. 11-18gr for double cup. 14-24gr triple cup). The Titan ODG supports user's need to modify grinding time setting frequently. To modify time setting of any of the preset modes, please follow these steps:

1. On any selected mode (LED is ON) The display shows your current set time (in seconds and tents of seconds). To increase or decrease set time value, rotate the time setting dial knob. Time value will blink, Follow the new time set up on the LCD.
2. When reaching the desired time value press shortly the mode selector button. The new time value will be stored in the memory and stop blinking (when not doing so for 3 sec the time value will return to previous set value)

Operating intervals:

- To avoid over heating of grindstones and grinding chamber (resulting unnecessary heating of the coffee) the manufacturer is recommending using the grinder for short intervals of moment each. In dose mode, the Titan II ODG V1 grinder is used every 20 seconds.
- Titan II ODGV1 grinder does not grind more than 4kg (8 pounds) of coffee per day.

Dose counting DISPLAY:

The Titan ODG V1 grinder is equipped with 3 independent dosing counters.

- To view the content of each counter, a single press on the counter's selector will display the next counter's content and at the same time the relative counter's LED will turn on.
- 2 of the counters are resettable (middle and right side); the zero reset can be achieved by 5 sec

continues press on the counter selector will zero the relative counter.

- On single cup mode each coffee demand will increase the counting on all the 3 counters in 1.
- On double cup mode each coffee demand will increase the counting on all 3 counters in 2.
- On triple cup mode each coffee demand will increase the counting on all 3 counters in 3.
- Pressing the Jog button will not count.

Grind size setting adjustment (for all models)

- The Titan grinders' family are equipped with the revolutionary patented **Bottom-Setting®™** mechanism. (see Fig. 5.5).



Fig. 5.5

- The grinding grindstones' distance was factory pre adjusted to satisfy different common espresso coffee grinds. This clearance span can be achieved by turning the grind setting adjustment knob. Turning the grind setting knob incrementally counterclockwise (CCW) will make the grind coarser and turning it clockwise (CW) will make the grind finer.

6) SAFETY DEVICES

A) Thermal overload protection

To eliminate the risk of fire, the motor is equipped with an overheat protection device which will cutoff the motor's power supply should it reach a high temperature.

- In the event that the thermal protection is tripped as a result of malfunction (e.g.: jammed grindstones, worn out bearings, foreign object in grinding chamber, etc.) the grinder main switch should be turned off immediately and the main power plug must be disconnected. For further handling of the device contact your local service provider, and allow the grinder to cool down before any further maintenance.
- In the event that the thermal protection is tripped as a result of a long continuous operation (read section 5, for operating intervals) allow the grinder to cool down and reset the thermal cutoff protection by unplugging the main cable from the socket. On the first operation after resetting a tripped overheat protection device observe the grinding quality and noise level, and if there are any irregularities shut down the grinder and call a certified technician for a complete analysis of the grinder.

B) Grinding chamber hopper fixing screw

The grinding chamber is a hazardous area if the proper precautions aren't observed. To avoid any hand contact with running grindstones. Do not attempt to operate the grinder without the hopper is fully placed and fixed in its position by hopper's fixing screw (Fig. 4.4).

7) SAFETY INSTRUCTIONS

- ! NEVER OPERATE THE GRINDER IF THE BEAN HOPPER IS NOT FULLY SECURED TO THE TOP GRINDSTONE HOLDER. BEFORE REMOVING THE HOPPER FOR ANY REASON MAKE SURE TO DISCONNECT THE POWER SUPPLY.
- ! AVOID CLEARING FOREIGN OBJECTS FROM THE GRINDING CHAMBER OR HOPPER WHEN THE GRINDER IS PLUGGED INTO A POWER SOCKET.
- ! Never attempt to insert your fingers or any foreign objects into the grinding chamber or grindstones.
- ! Be aware that grindstones continue rotating for a short while even after the grinding operation has ended.
- ! BEFORE ANY MAINTENANCE, EVEN FOR CLEANING, ALWAYS DISCONNECT THE POWER SUPPLY.
- ! If the grinder has a malfunction, or the grindstones need to be replaced, do not attempt to service the grinder by yourself.
- ! Do not change or tamper with the grinder.
- ! Do not use the grinder barefoot or if your hands or feet are damp.
- ! Do not use the cable wire to pull and disconnect the power plug.
- ! Always keep the grinder dry (internally and externally).
- ! Never put grinded coffee into the hopper or try to grind twice coffee powder.
- ! Never attempt grinding anything else other than coffee beans.

8) MAINTENANCE AND SERVICE

Warning: All grinders' technical handling operations, such as installation, maintenance, or service should be performed by certified personnel or by your local dealer.

Check the state of the grindstones periodically (approximately every 50kg of grinded coffee) Good condition grindstones will result in a high quality grind and prevent the grinders over heating. Replace grindstones every 400KG of grinded coffee (when using original replacement parts)

Be aware of the grinder's noise level. In case the noise level is higher than normal or irregular noises are coming from within the grinder, get certified personnel to perform an overall check of the grinder.

9) CLEANING

BEFORE ANY CLEANING ROUTINE DISCONNECT THE GRINDER POWER SUPPLY. NEVER USE RUNNING WATER TO CLEAN THE MAIN BODY AND DISPENSER. USE ONLY PERFECTLY CLEAN CLOTHS OR BRUSHES TO CLEAN THE GRINDER. DO NOT USE ABRASIVE CLEANING PRODUCTS AS THEY MAY WEAR OUT THE GRINDER COATING.




Cleaning the bean hopper

Take off the bean hopper (by releasing Bean Hopper safety screw, Fig. 4.4) and rinse it thoroughly with water and soap. As the bean hopper is made of clear polymer, use only liquid detergent (free of abrasive components) and soft sponge. Before reinstalling the beans hopper back to its position, make sure it is dried thoroughly. To ensure great coffee taste, clean the bean hopper periodically.



Cleaning the grinding chamber and grinding parts

Follow the instruction below for grinding chamber and grinding parts cleaning:

 <p>STEP1 After removing the hopper, Disconnect the top cover screw using the Allen key.</p>	 <p>STEP2 Remove the hopper locking screw using the Allen key.</p>	 <p>STEP3 Put the Allen key through the air vents of the top cover, then lift the top cover.</p>	
 <p>STEP4 Use a Allen key to remove the 3 top grindstone holder's screws.</p>	 <p>STEP5 Use a screwdriver to remove the 3 grindstone's screws.</p>	 <p>STEP6 Use a brush, a dry cloth, and a vacuum cleaner to clean the grinding chamber thoroughly.</p>	 <p>STEP7 Use a brush, a dry cloth, and a vacuum cleaner to clean the upper and lower grindstone thoroughly.</p>

- Do not use sharp objects to scrape coffee residue of the grindstones.
- Examine grindstones' condition and replace them if necessary.
- The replacement and assembly of a new set of grindstones is a delicate task.

Only skilled technical personnel should be allowed to perform grindstone removal and assembly.

After all cleaning and replacing tasks are through make sure to assemble all of the parts and safety screws the same way as they were disconnected. If anything does not fit back together or there are some leftover parts, do not attempt to operate the grinder, call for the assistance of your technician.

To ensure long lasting grinder and great fresh taste of coffee, the cleaning procedure as described above should be repeated routinely and at least once per month or as necessary according the grinder's usage and quality of beans.

END

10) Add your remarks here

[illegible]

Important details and telephone numbers:

Local dealer

Address: _____

Telephone number: _____ Fax number: _____

Technician mobile number: _____ name: _____

Coffee beans supplier details:_____

Telephone number: _____ Fax number: _____

TITAN II
型号 ODG V1
按需研磨的咖啡磨豆机
操作说明书



赫意凯（常州）电器设备有限公司

常州市武进经济开发区腾龙路 2 号 6 号厂房

邮编：213161

警示

1. 该款机器不建议有生理，视觉或精神缺陷的，或缺乏此方面经验和知识的人操作使用（包括儿童在内），除非有相关负责人授权使用。
2. 儿童禁止触碰该磨豆机。
3. 在清洁磨豆机时需小心刀片部位，以免划伤。
4. 如果发现电源线有损坏，请联系制造商，代理商或相关技术人员维修，以免造成伤害。



废旧产品处理

标志表明此产品不可与其他生活垃圾一同处理。为防止不当处理对环境的污染和人类健康的损害，请注意材料的合理可再回收使用。请联系当地的经销商或通过回收利用系统回收该废弃磨豆机，以保证产品安全回收。

质保说明

制造商提供2年保修期，自该磨豆机销售到终端客户开始。质量保修仅限于零部件和技术支持。在保修期内，仅限该磨豆机制造厂商授权的服务机构进行维修。在保质期内维修的，请出示原始标有购买日期的发票。

以下情况不在保修范围之列：

正常损耗和非正常使用造成的损坏，如机器超负荷使用，使用不配套的配件，强行操作，由外部环境造成的损坏，未阅读说明书而操作失误的，如：连接至不匹配电源或未按照说明安装操作，擅自整体或部分拆卸机器都不在保修之列。

目录

1) 前言4

2) 技术参数.....4

3) 产品示意图.....4

4) 开箱与安装.....5

5) 操作指南.....6

6) 安全装置.....8

7) 安全说明.....9

8) 维修与服务.....10

9) 清洁.....10

10) 问题反馈及重要细节.....12

1) 前言

欢迎购买使用 Titan 按需研磨的咖啡磨豆机（ODG 款）。Titan 咖啡磨豆机是一款商用电器，适用于咖啡店，Espresso 咖啡吧，酒店，餐厅等。Titan 能够适用于不同种类的咖啡豆需求，用户根据需求设定好咖啡粉（从细粉到粗粉）后，用意式接粉器或其他适合的接粉器来接粉。请在使用前逐页阅读该说明书，以确保正确安全的使用和保养设备。并请妥善保管说明书，以备日后使用和参考。厂商保留修改设计及规格的权利。

2) 技术参数

尺寸参数:
高: 560mm
宽: 220mm
长: 360mm
重量: 10.5Kg
刀片直径: 64mm
漏斗容量: 1200g咖啡豆
电气参数:
电压: 230V 50Hz/60Hz
功率: 350W
占空比: 3.5S ON/26S OFF
研磨速度:
意式咖啡档位: 2.5-3.0 gr/sec

3) 产品示意图



4) 开箱与安装

警告：所有该磨豆机的技术操作，包括安装、维护、保养等必须由专业人士或当地经销商的指导下操作使用。

- 打开包装箱后，确认机器完好无损。如有任何疑问，禁止使用并立即联系当地经销商。
- 请小心拆箱。为了您的方便，我们建议请妥善保存包装以备日后运输机器使用。
- 请将机器放在平稳干燥处，避免滴水或溅水。
- 请将托盘安装到设备前面的专门设计的外壳中（图4.1）。



图 4.1

- 在安装漏斗之前，请花几秒钟确定漏斗、硅胶环，以及漏斗的紧定螺丝的相对位置。
- 将漏斗稳固地安装到机身顶部的上刀架内。



图4.2



图4.3



图4.4

图 4.2~4.4

- 用紧定螺钉将漏斗固定在机身上，（图4.4）确保紧定螺钉完全通过漏斗孔上的背孔。

！ 漏斗紧定螺钉是一种安全装置，拆卸漏斗前应先断开电源线。

！ 如果漏斗没有完全固定在其位置，请勿尝试操作磨豆机。

- 在插上电源之前，请确保：

- 所用电压与产品铭牌相符。
- 必须与接地插座连接。

！ 本机器必须接地。如果不遵守本规定，制造商不承担责任。

- 设备的功率/电流消耗（根据背面标签）与相关主插座的容量一致。

- 主插座可防止短路和电涌。
- 不要使用延长电缆，将适配器插入多个插座，或进行移位连接。
- 插上电源。
- 第一次操作时，在将咖啡豆放入漏斗之前，先将设备打开几秒钟，检查刀片的旋转方向是否为顺时针。
- 如果旋转方向错误，请勿使用本产品，并与当地经销商联系以获取进一步的指导。

5) 操作指南

Titan II ODG V1款磨粉操作:

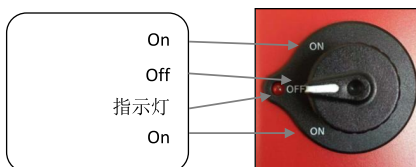


图 5.1

Titan II ODG V1 磨豆机安装了带有3种调节模式的主开关（图5.1）

通过将旋钮从“OFF”位置转到“ON”位置来打开磨豆机。

通过将旋钮转回指向“OFF”标志来关闭磨豆机。

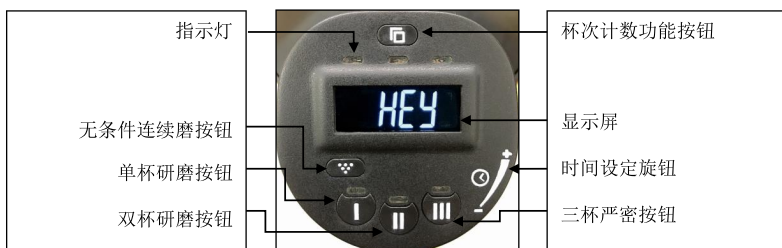


图 5.2

在开始研磨咖啡之前，请花几分钟时间了解一下ODG V1按需研磨的咖啡磨豆机的控制面板（图5.2）

操作模式:

ODG V1可以在3种预先设定的模式下运行。通过短按相对应的模式按钮，可激活（或关闭）相对应的模式。操作模式一旦被激活，LED灯就会亮起。

- **单杯模式**

在单杯模式下，可通过按下需求开关（图5.3）激活磨豆机，松开它以停止研磨，从而来设定单杯研磨所需的时间周期。或者连续按住模式按钮2秒以上（通过时间调节拨盘设置所需的预定的时间），则无需按下需求开关即可完成单杯研磨时间的预设。

- **双杯模式**

在双杯模式下，可通过按下需求开关（图5.3）激活磨豆机，松开它以停止研磨，从而来设定双杯研磨所需的时间周期。或者连续按住模式按钮2秒以上（通过时间调节拨盘设置所需的预定的时间），则无需按下需求开关即可完成双杯研磨时间的预设。

- **三杯模式**

在三杯模式下，可通过按下需求开关（图5.3）激活磨豆机，松开它以停止研磨，从而来设定三杯研磨所需的时间周期。或者连续按住模式按钮2秒以上（通过时间调节拨盘设置所需的预定的时间），则无需按下需求开关即可完成三杯研磨时间的预设。

- **连续研磨按钮**

用户可通过按下连续研磨按钮，来控制磨豆机研磨咖啡粉的出粉量。

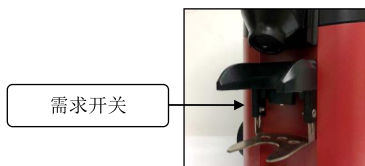


图 5.3



图 5.4

单杯模式/双杯模式/三杯模式的研磨时间预设

每台磨豆机在出厂时，工厂会按照预估值为每个模式设定研磨时间。任何模式下的研磨时间会因为不同的因素而存在差异，用户需根据自身的研磨需求自行设定研磨时间。一般来说，研磨的粗细度越粗，研磨时间越短，所以同样重量的咖啡粉，研磨时间越短。此外，不同类型的混合咖啡和咖啡店需求的不同剂量的咖啡杯（6.5-9.5克每杯），在同样的模式下都会产生不同的研磨时间。（一般11-18克为双杯，14-24克为三杯）。Titan II ODGV1支持用户按照需求自由的调整研磨时间的预设。修改任何一种模式下的研磨时间，请按照以下步骤进行：

1. 在任何选定模式下(LED灯亮)，显示器显示您当前设定的时间(以秒为单位)。当旋转时间设置旋钮时，可增加或减少设置时间值，停止旋转时间设置旋钮，LCD上显示新的设置时间，时间值将闪烁。
2. 当达到所需的时间值时，短按模式选择按钮。时间值停止闪烁，新的时间值将被存储在内存中。（若无任何操作，时间值闪烁3秒后自动停止闪烁，时间值将返回到以前的设置值）。

操作时间间隔：

- 长时间使用，磨粉室温度升高为正常现象。为了避免刀片和研磨室过热（导致给咖啡粉进行不必要的加热），每次操作时，建议间隔几分钟再继续使用。在剂量模式下，Titan II ODG V1 磨豆机每 20 秒使用一次。
- Titan II ODGV1 磨豆机每天研磨的咖啡豆不超过 4 公斤 (8 磅)。

剂量计算显示：

Titan ODG V1 磨豆机具有 3 个独立的计量计数器。

- 要查看每个计数器的内容，只需在计数器的按钮上按一下，同时相关计数器的 LED 灯会打开，显示屏上就会显示相对应的计数器的内容。
- 2 个计数器可清零 (中间和右边)，长按技术器按钮 5 秒，则可将相对应的计数器清零。最左边的计数器数值不能清零，其显示的是总的计数值。
- 在单杯模式下，每磨一杯咖啡，计数器数值将加 1。
- 在双杯模式下，每磨一杯咖啡，计数器数值将加 2。
- 在三杯模式下，每磨一杯咖啡，计数器数值将加 3。
- 按下 Jog 按钮不算数。

咖啡研磨调节：

- Titan 系列磨豆机赋予有革命性专利的 Bottom-Setting®™ （图 5.5）



图 5.5

- 为满足不同的普通意式浓缩咖啡研磨，工厂对刀片距离事先进行了调节。该间隙跨度可以通过转动研磨设置旋钮来实现。逆时针旋转粉更粗，顺时针旋转粉更细。

6) 安全装置

A) 热过载保护

为了消除火灾的危险，电机配备有过热保护装置，如果电机温度过高，则该过热保护装置将切断电

机的电源。

- 如果过热保护装置由于故障跳闸（例如：磨损的刀片，磨损的轴承，研磨室中的异物等），应立即关闭设备主开关，并且主电源插头必须断开。要进一步处理设备，请与当地服务提供商联系，并在进行任何进一步维修之前让设备冷却下来。
- 如果由于长时间连续操作而导致过热保护装置跳闸（请参阅第5节，操作间隔），则让设备冷却，并通过拔掉电源来复位过热保护装置。在复位过热保护装置后的第一次操作中，观察研磨质量和噪声水平，如果有任何异常，请关闭设备，并致电认证技术人员进行设备的维修。

B) 漏斗固定螺丝

如果没有适当的预防措施，研磨室是个危险区域。为了避免手与运行中的刀片接触，如果漏斗没有通过漏斗上的紧固螺钉（图4.4）完全固定在其位置，请勿尝试操作磨豆机。

7) 安全说明

- ！ 如果漏斗没有被完全固定到磨豆机的顶部上，请勿操作磨豆机。在取下漏斗之前，请先断开电源。
- ！ 当将设备插入电源后，避免从研磨室或者漏斗中清除异物。
- ！ 请勿将手指或任何异物插入刀片或者研磨室。
- ！ 当心！无论切断电源还是任何操作结束后刀片仍会保持一定时间的惯性旋转。
- ！ 进行清洗或者维修之前，请先断开电源
- ！ 如果设备出现故障或需要更换刀片，请勿尝试自行维修设备。
- ！ 请勿更换或篡改本产品。
- ！ 请勿赤脚或者湿手的时候使用设备
- ！ 在移动机器时请勿拉扯电源线
- ！ 始终保持设备干燥（内部和外部）。
- ！ 请勿将研磨过的咖啡粉放入漏斗或尝试研磨咖啡粉两次。
- ！ 不要研磨除咖啡豆以外的任何东西。

8) 维修及服务

警告:所有的设备的维护与操作，如安装、维修及保养都应该由专业人员或当地经销商处理。

定期检查研磨刀片（约研磨50公斤咖啡豆），保持刀片状况的良好可以保证高品质的研磨和避免机器过热。每研磨400公斤咖啡豆后需更换研磨刀片（建议使用原厂配套零件）。

请注意机器的噪音情况，一旦噪音高于正常水平或者有内部不规则噪音，请联系专业人员进行全面检查。

9) 清洁

清洁本机前请断开电源。请勿用水清洗主机身或者分配室。必须使用干净的清洁布和刷子清洁设备。不要使用磨损性的物品清洁本机，可能会导致机器表面涂层的磨损。



漏斗的清洁:

取下漏斗（通过卸下漏斗紧定螺丝，图4.4），并用水和肥皂彻底冲洗。因为漏斗未透明聚合物，只能使用液体洗涤剂（不含磨损性成分）和软海绵。安装漏斗之前，请确保其完全干燥。为了确保咖啡的味道，请定期清洗漏斗。

磨粉相关零部件的清理:

请按照以下图示操作:

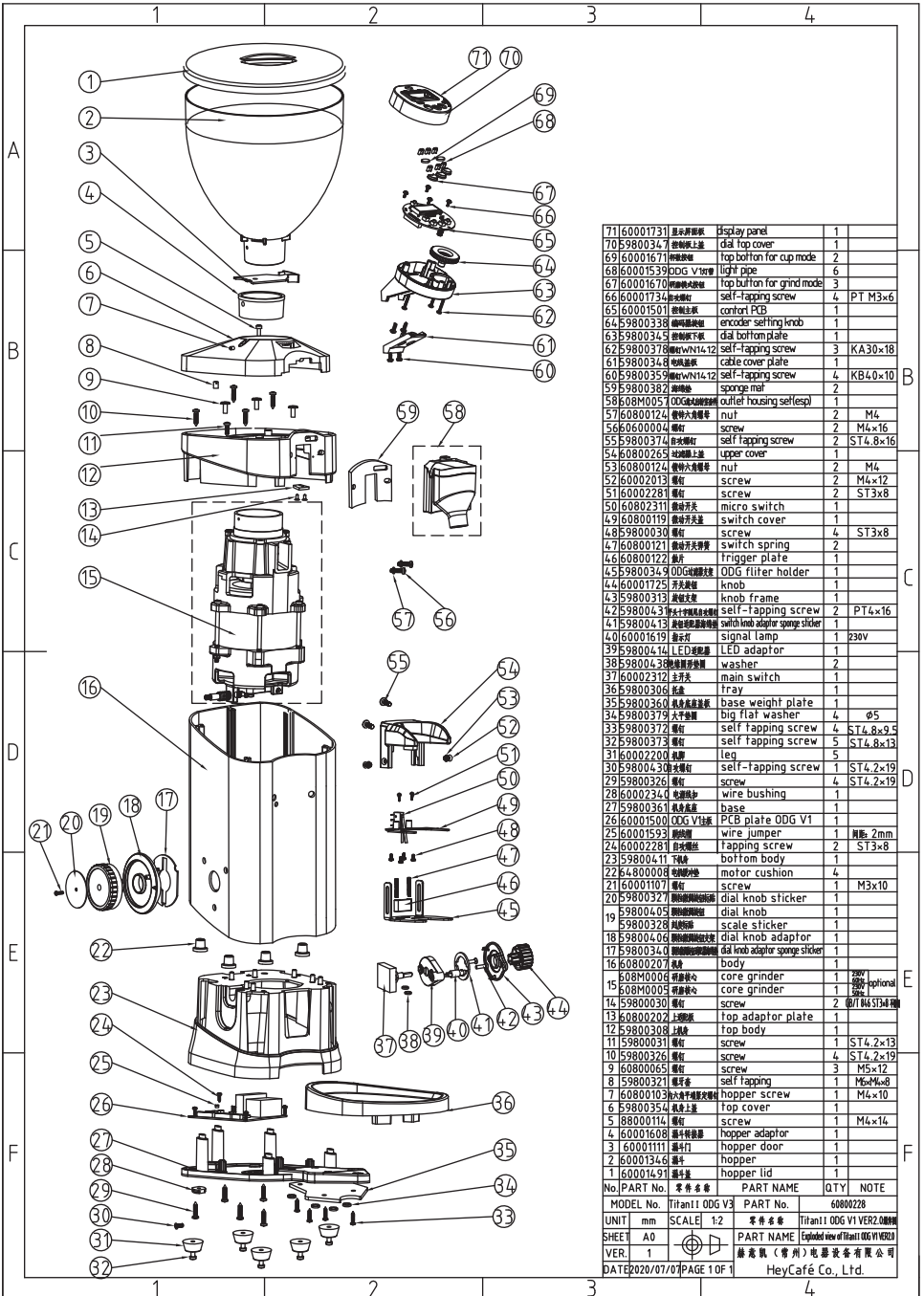
			
<p>步骤1</p> <p>取下漏斗之后, 使用3mm内六角扳手拆掉机身上盖的锁紧螺钉</p>	<p>步骤2</p> <p>使用2mm内六角扳手拆下漏斗锁紧螺钉</p>	<p>步骤3</p> <p>将内六角扳手穿过机身上盖上的散热槽口, 然后取下机身上盖</p>	
			
<p>步骤4</p> <p>用3mm内六角扳手拆卸上刀架上的锁紧螺钉, 取下上刀架</p>	<p>步骤5</p> <p>用一字螺丝刀拆卸下刀架上的刀片锁紧螺钉</p>	<p>步骤6</p> <p>使用刷子, 干布和真空吸尘器彻底清洁研磨室。</p>	<p>步骤7</p> <p>使用刷子, 干布和真空吸尘器彻底清洁上下刀片</p>

- 不要使用锋利的物体来刮掉刀片上的咖啡渣。
- 检查刀片的状况并在必要时更换。
- 只有熟练的技术人员可以拆卸和组装刀片。

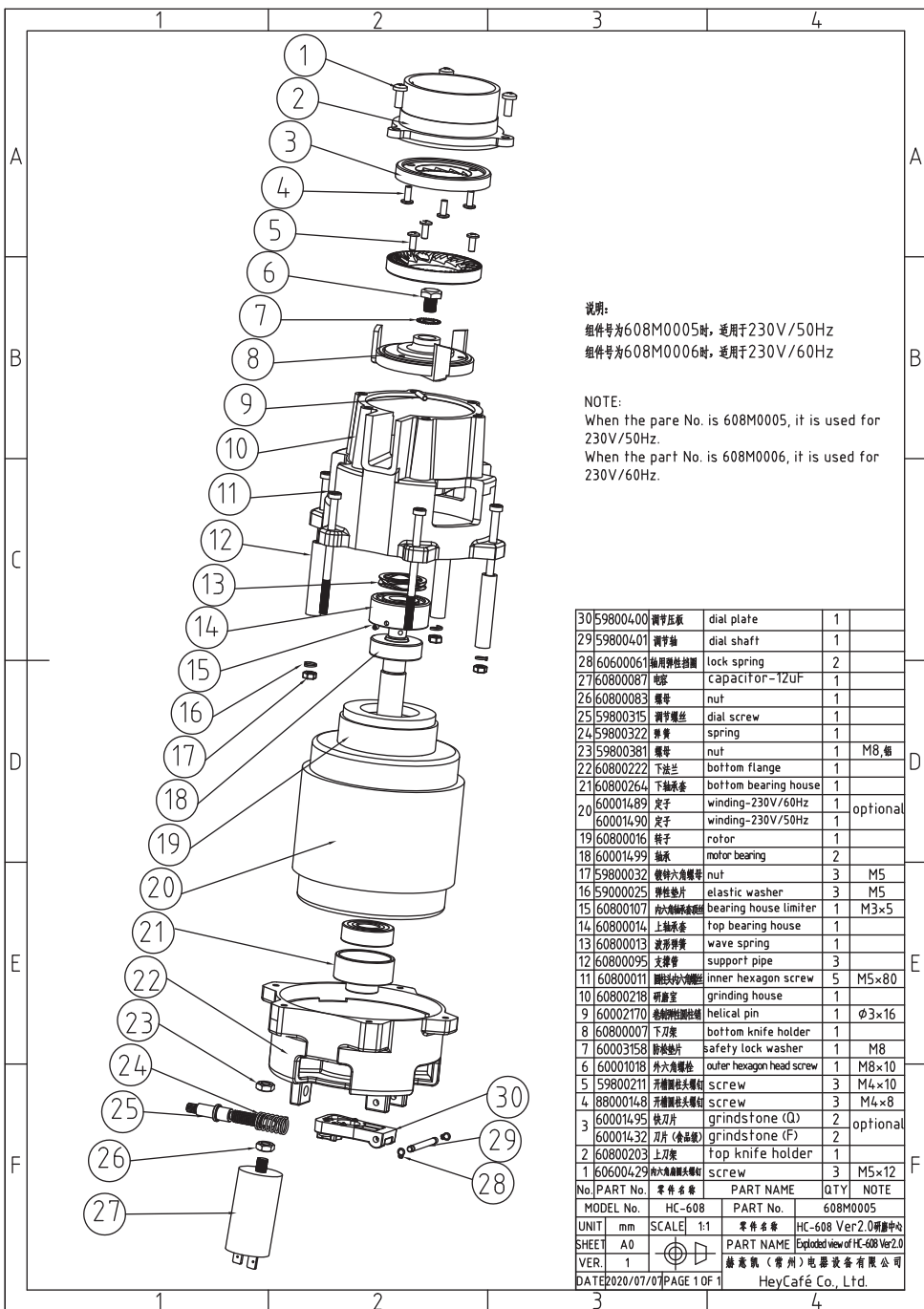
清洗和更换完成后, 请确保按照与拆卸相同的方式组装所有部件和安全螺钉。如果任何东西不能装回或有一些残留部件, 请勿尝试操作本产品, 请求技术人员协助。

为了确保磨豆机的长久使用和咖啡的新鲜口感, 如上所述的清洗过程应当每月重复, 并且每月至少清洗一次或者根据磨豆机的使用情况和咖啡豆的质量进行必要地重复。

结 束




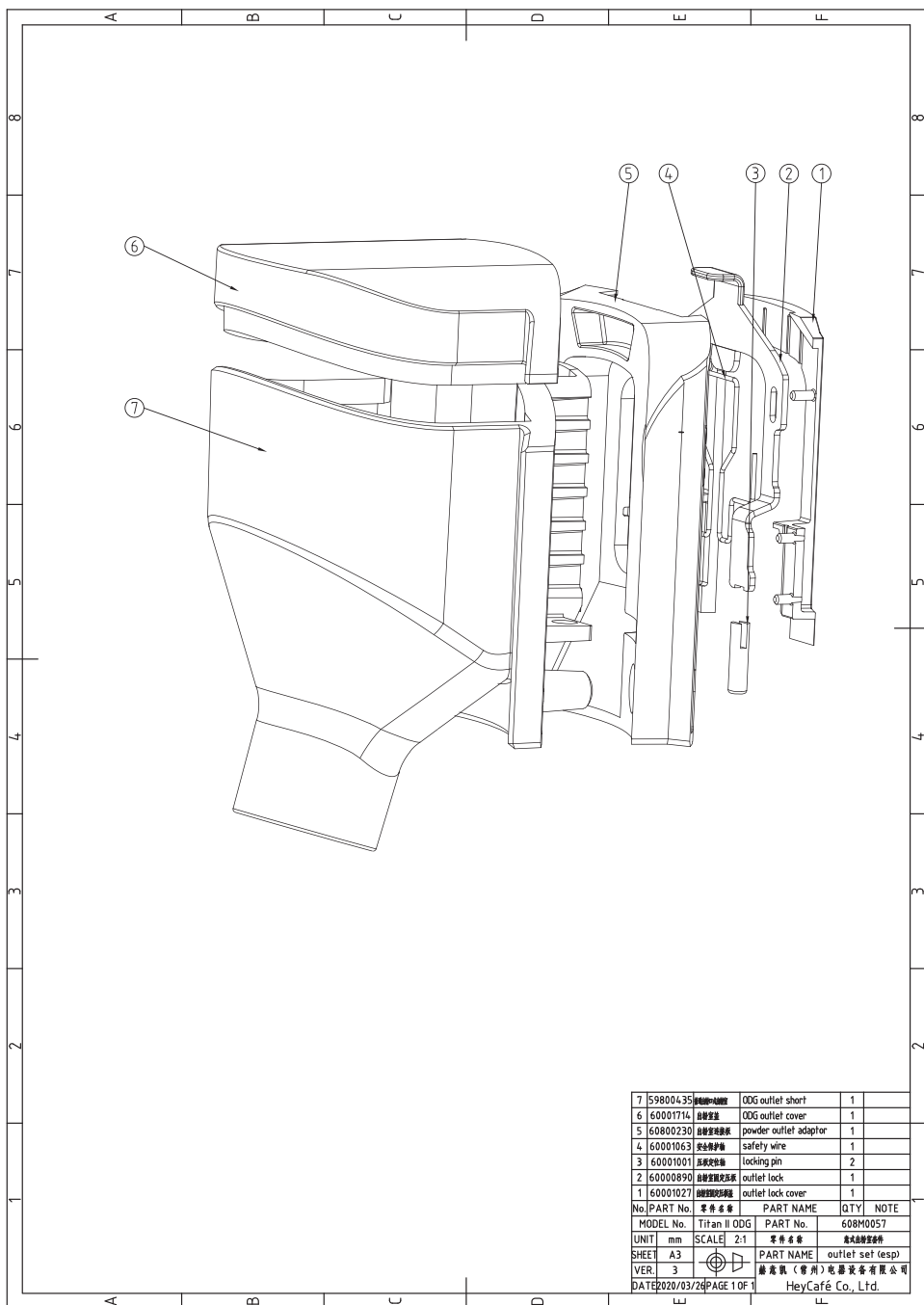
71	60001731	显示面板	display panel	1	
70	59800347	顶部盖	dial top cover	1	
69	60001671	顶部盖	top button for cup mode	2	
68	60001539	ODG V1管	light pipe	6	
67	60001670	顶部盖	top button for grind mode	3	
66	60001734	底部盖	self-tapping screw	1	PT M3x6
65	60001501	底部盖	control PCB	1	
64	59800338	底部盖	encoder setting knob	1	
63	59800345	底部盖	dial bottom plate	1	
62	59800378	底部盖	self-tapping screw	3	KA30x18
61	59800348	底部盖	cable cover plate	1	
60	59800358	底部盖	self-tapping screw	4	KB40x10
59	59800382	底部盖	sponge mat	2	
58	08M005	ODG V1管	outlet housing selfesp	1	
57	60800124	螺母	nut	2	M4
56	60600004	螺母	screw	2	M4x16
55	59800374	底部盖	self-tapping screw	2	ST4.8x16
54	60800265	底部盖	upper cover	1	
53	60800124	螺母	nut	2	M4
52	60600203	螺母	screw	2	M4x12
51	60002281	螺母	screw	2	ST3x8
50	60802311	微动开关	micro switch	1	
49	60800119	微动开关	switch cover	1	
48	59800030	螺母	screw	4	ST3x8
47	608000121	微动开关	switch spring	2	
46	60800122	微动开关	washer	1	
45	59800349	ODG V1管	ODG filter holder	1	
44	60001725	底部盖	knob	1	
43	59800313	底部盖	knob frame	1	
42	59800043	底部盖	self-tapping screw	2	PT4x16
41	59800043	底部盖	switch knob adaptor sponge sticker	1	
40	60001619	底部盖	signal lamp	1	230v
39	59800044	LED灯	LED adaptor	1	
38	59800043	底部盖	washer	2	
37	60002312	底部盖	main switch	1	
36	59800306	底部盖	tray	1	
35	59800360	底部盖	base weight plate	1	
34	59800379	底部盖	big flat washer	4	φ5
33	59800372	底部盖	self-tapping screw	4	ST4.8x9.5
32	59800373	底部盖	self-tapping screw	5	ST4.8x13
31	60002203	底部盖	el	5	
30	59800043	底部盖	self-tapping screw	5	ST4.2x19
29	59800326	底部盖	screw	4	ST4.2x19
28	60002340	底部盖	wire bushing	1	
27	59800361	底部盖	base	1	
26	60001500	ODG V1管	PCB plate ODG V1	1	
25	60001593	底部盖	wire jumper	1	长度: 2mm
24	60002281	底部盖	tapping screw	2	ST3x8
23	59800043	底部盖	bottom body	1	
22	64800008	底部盖	motor cushion	4	
21	60001107	底部盖	screw	1	M3x10
20	59800043	底部盖	dial knob sticker	1	
19	59800043	底部盖	dial knob	1	
18	59800328	底部盖	scale sticker	1	
17	59800406	底部盖	dial knob adaptor	1	
16	59800349	底部盖	dial knob adaptor sponge sticker	1	
15	60800202	底部盖	body	1	
14	60800006	底部盖	core grinder	1	230v optional
13	60800006	底部盖	core grinder	1	230v optional
12	59800030	底部盖	screw	2	PT4.8x14
11	60800202	底部盖	top adaptor plate	1	
10	59800031	底部盖	screw	1	ST4.2x13
9	59800326	底部盖	screw	4	ST4.2x19
8	60800065	底部盖	screw	3	M5x12
7	59800321	底部盖	self tapping	1	M6x4x18
6	60800103	底部盖	hopper screw	1	M4x10
5	59800354	底部盖	top cover	1	
4	60001608	底部盖	hopper adaptor	1	M4x14
3	60001111	底部盖	hopper door	1	
2	60001346	底部盖	hopper	1	
1	60001491	底部盖	hopper lid	1	
No.	PART No.	零件名称	PART NAME	QTY	NOTE
MODEL No.	Titan11 ODG V3	PART No.	60800228		
UNIT	mm	SCALE	1:2		Titan11 ODG V1 VER2.0808
SHEET	A0				PART NAME Exploded view of Titan11 ODG V1 VER2.0808
VER.	1				制造商 (常州) 亿嘉设备有限公司
DATE	2020/07/07	PAGE	1 OF 1		HeyCafé Co., Ltd.



说明:
组件号为608M00005时,适用于230V/50Hz
组件号为608M00006时,适用于230V/60Hz

NOTE:
When the pare No. is 608M0005, it is used for 230V/50Hz.
When the part No. is 608M0006, it is used for 230V/60Hz.

30	59800400	调字压板	dial plate	1			
29	59800401	调字轴	dial shaft	1			
28	60600061	轴用弹性挡圈	lock spring	2			
27	60800087	电容	capacitor-12uF	1			
26	60800083	螺母	nut	1			
25	59800315	调字螺丝	dial screw	1			
24	59800322	弹簧	spring	1			
23	59800381	螺母	nut	1	M8, 备		
22	60800222	下法兰	bottom flange	1			
21	60800264	下轴承套	bottom bearing house	1			
20	60001489	定子	winding-230V/60Hz	1	optional		
19	60001490	定子	winding-230V/50Hz	1			
18	60800016	转子	rotor	1			
17	60001499	轴承	motor bearing	2			
16	59800032	锁特六角螺母	nut	3	M5		
15	59000025	弹性垫片	elastic washer	3	M5		
14	60800107	轴承套限位器	bearing house limiter	1	M3x5		
13	60800014	上轴承套	top bearing house	1			
12	60800013	波型弹簧	wave spring	1			
11	60800095	支撑管	support pipe	3			
10	60800011	内六角螺钉	inner hexagon screw	5	M5x80		
9	60800218	研磨室	grinding house	1			
8	60002170	斜制弹性销	helical pin	1	φ3x16		
7	60800007	下刀架	bottom knife holder	1			
6	60003158	防松垫片	safety lock washer	1	M8		
5	60001018	外六角螺栓	outer hexagon head screw	1	M8x10		
4	59800211	开槽螺母	screw	3	M4x10		
3	88000148	开槽螺母	screw	3	M4x8		
2	60001495	快刀片	grindstone (Q)	2	optional		
1	60001432	刀片 (食品级)	grindstone (F)	2			
26	60800203	上刀架	top knife holder	1			
16	60600429	外六角螺钉	screw	3	M5x12		
No. PART No.	零件名称		PART NAME	QTY	NOTE		
MODEL No.	HC-608		PART No.	608M0005			
UNIT	mm	SCALE	1:1	零件名称 HC-608 Ver2.0 研磨中心			
SHEET	A0						
VER.	1						
PART NAME			Exploded view of HC-608 Ver2.0				
赫意凯 (常州) 电器设备有限公司							
DATE			2020/07/07				
PAGE			10F				
HeyCafé Co., Ltd.							



7	59800435	出口短管	ODG outlet short	1	
6	60001714	出口盖	ODG outlet cover	1	
5	60800230	出口适配器	powder outlet adaptor	1	
4	60001063	安全保险丝	safety wire	1	
3	60001001	定位销	locking pin	2	
2	60000890	出口锁	outlet lock	1	
1	60001027	出口锁盖	outlet lock cover	1	
No.		PART No.	PART NAME	QTY	NOTE
MODEL No.		Titan II ODG	PART No.	608M0057	
UNIT	mm	SCALE 2:1	零件名称	零件名称	
SHEET A3			PART NAME	outlet set (esp)	
德富康(常州)咖啡设备有限公司					
DATE 2020/03/24			PAGE 1 OF 1		
			HeyCafé Co., Ltd.		

