

Commercial Coffee Grinder with Dispenser

AROMA II VER2.0

Models: S/ AD

Instructions' Manual



Designed in EU.

Produced by HeyCafé Co., Ltd. 赫意凯 (常州) 电器设备有限公司

Building #6, #2 Tenglong Rd, Wujin Economic Development Zone, Jiangsu, 213161 China

WARNINGS

- This appliance is not intended for use by persons (including children) with reduced physical, sensory or mental capabilities, or lack of experience and knowledge, unless they have been given supervision or instruction concerning use of the appliance by a person responsible for their safety.
- Children should be supervised to ensure that they do not play with the appliance.
- Care is needed when handling cutting blades during cleaning.
- If the supply cord is damaged, it must be replaced by the manufacturer or its service agent or a similarly qualified person in order to avoid a hazard.



Correct Disposal of this product

This marking indicates that this product should not be disposed with other household wastes throughout the EU. To prevent possible harm to the environment or human health from uncontrolled waste disposal, recycle it responsibly to promote the sustainable reuse of material resources. To return your used device, please use the return and collection systems or contact the retailer where the product was purchased. They can take this product for environmental safe recycling.

Warranty Information

The manufacturer provides warranty in accordance with the legislation of the customer's own country of residence, with a minimum of 1 year (Germany: 2 years), starting from the date on which the appliance is sold to the end user.

The warranty only covers defects in material or workmanship.

The repairs under warranty may only be carried out by an authorized service centre.

When making a claim under the warranty, the original bill of purchase (with purchase date) must be submitted.

The warranty will not apply in cases of:

Normal wear and tear
Incorrect use, e.g. overloading of the appliance, use of non approved accessories
Use of force, damage caused by external influences
Damage caused by nonobservance of the user manual, e.g. connection to a non suitable mains supply or non compliance with the installation instructions
Partially or completely dismantled appliances

TABLE of CONTENTS

1) Preface.....	4.
2) Technical Specifications	4.
3) General Description	5.
4) Unpacking and installation	5.
5) Operation.....	6.
6) Safety devices.....	8.
7) Safety instructions.....	9.
8) Maintenance and service.....	9.
9) Cleaning.....	9.
10) Remarks and important details.....	11.

1) PREFACE

Congratulations for purchasing the Aroma II espresso grinder with dispenser. The Aroma II is currently the most advanced step-less 64mm commercial grinder. It is equipped with the revolutionary BottomSetting® and a digital revolutionary micron measurement of grind setting ©. The Aroma II grinder was designed to be used in coffee shops, espresso bars, hotels, restaurants, etc. The Aroma II grinder will grind whole bean coffee into variable, user selectable (from super fine to coarse) coffee powder. The all-aluminum dispenser will accurately dispense a dose of 5.5-9.5gr of coffee powder to the espresso machine's Porta filter handle.

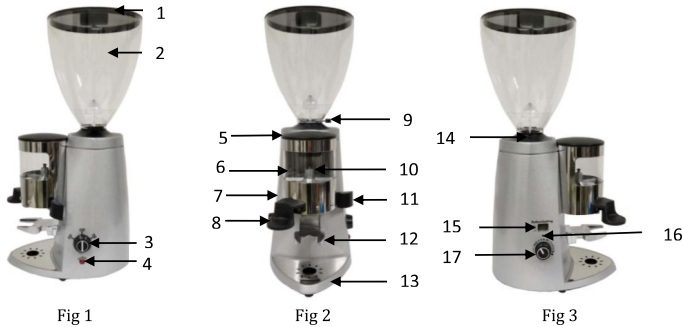
Read this manual from cover to cover before using the grinder as it contains important safety instructions and operation, and maintenance procedures for your appliance. Keep the manual in a safe place for future use and reference. The manufacturer reserves the right to modify the appliance and the manual accordingly.

2) TECHNICAL SPECIFICATIONS Aroma II VER2.0

Dimensions [mm]: (view picture on right)
Height: 600mm
Width: 200mm
Length: 320mm
Weight: 13Kg
Burrs diameter: 64mm (flat type)
Hopper capacity: 1500gr. of Coffee beans
Electrical Specifications:
Electricity: (3 models) 110V/60Hz, 230V/50Hz, 230V/60Hz
Power: 350w
Duty Cycle: 50%
Grinding capacities: 2.5-3gr/sec@#1.5setting(espresso)



3) General Description



1	Beans' hopper lid	7	Grinder's main body	13	Residue tray
2	Beans hopper	8	Tamper	14	Hopper secure screw
3	Main switch	9	Beans' hopper door	15	Grinding dial setting LCD
4	Signal lamp	10	Dispenser adjustment	16	Reset/Calibration button
5	Dispenser's lid	11	Dispenser handle	17	Grinding dial
6	Dispenser	12	Filter holder fork		

4) Unpacking and installing:

Warning: All appliances' technical handling operations such as installation, maintenance, or service should be performed by certified personnel or by your local dealer.

- After opening the box, make sure that the grinder is intact and that there is no visible damage. If there is any doubt, DONOT use the grinder and call your local dealer for further assistance.
- Unpack the carton box carefully. For your convenience we suggest storing all packaging materials where they can be used in the future, whenever the grinder's transportation is required.
- Place the grinder on a stable flat counter in a dry area away from water or water splashes.
- Install the coffee residue tray and place the stainless tray on top of it.
- Before installing the beans' hopper, please note the correct installing position of the hopper. (Fig 4.1a and Fig 4.1b)
- Use the supplied Allen Key to fasten the hopper to the grinder's body (Fig 4.1c) Make sure that the screw is inserted completely through the specific hole in the hopper.



Fig 4.1a



Fig 4.1b



Fig 4.1c

- NEVER OPERATE THE GRINDER IF THE BEAN HOPPER IS NOT FULLY SECURED IN ITS POSITION.
- Before plugging in the electrical cord, make sure:

- The grinder's voltage and frequency rating (according to the bottom information label) is the same as the supply mains.
- The wall socket is fitted with an efficient ground contact. **DONOT** plug the appliance into the supply mains if the ground system was not positively checked to be in compliance with current safety rules. **IT IS COMPULSORY TO GROUND THE APPLIANCE.** The manufacturer can not be held responsible in the event that this regulation is not complied with.
- The power consumption of the appliance (according to the bottom information label) is consistent with the relevant wall socket capacity
- The wall socket is protected against shortcuts and power surges.
- Do not use extension cables, plug adapters for multiple sockets. Do not make shift connections.
- Plug in the grinder
- Upon first time operation, and before placing beans in to the hopper, **VISUALLY** check that the blade rotation direction is clockwise by switching the appliance **ON** for a second
- Should rotation direction wrong, don't use the grinder. Contact your local dealer for further instructions.

5) OPERATION

Grinding coffee with Aroma II grinder:

S Model (manual operation):

- The appliance is equipped with 3-state On/Off/On switch. (Fig 5.1a)
- Switch **ON** the appliance by turning the switch knob clockwise or counterclockwise (according user convenience).
- In order to shut off the grinding operation turn main switch knob back into the **OFF** position.

AD Model (Automatic operation)

- The appliance is equipped with a 3- state main switch: **OFF, ON, Run** (Fig 5.1b)
- In order to grind coffee:
 - Turn the main switch to **ON** state. In this position the grinder is in a stand-by mode. As long as the dispenser is not full of powder, the grinder can grind in two ways:
 - Manual start, turning the main switch to **RUN**
 - Automatic start, after few turns of the dispenser's handle (less than one complete circle)
 - When the grinder is running it will stop:
 - When the dispenser is full of powder
 - When main switch is turned to **OFF** position.



Fig 5.1a- S model



Fig 5.1b- AD model

Operating intervals:

- The manufacturer is not recommending using the grinder continuously for a period of time exceeding 12 minutes (or continuously grinding over 1KG of coffee).
- It is a normal occurrence that during long grinding periods the grinding chamber will heat up. In order to achieve best grinding results, it is recommended to grind coffee in short intervals of not more than few minutes each.

Adjusting coffee grind (Fig 5.2)

- The Aroma II grinder is equipped with step-less grinding adjustment coupled with a revolutionary encoder micrometric measurement of the grind setting and LCD display
- The grinding blades' distance was factory pre adjusted to satisfy different common coffee grinds from super fine to extra-coarse. The entire range can be achieved by turning the dial over 13 complete turns.
- Turning the grinding dial counterclockwise will make the grind finer and turning it clockwise will make the grind coarser. Along with the dial turning the LCD will show different setting reading. On the table below you can find the different setting corresponding to different coffee grinding:

LCD reading	Coffee Grind usage	Dial turns (from most fine position)
1-7	Turkish coffee grinding	Most fine to two turns
8-18	Espresso coffee grinding	Two turns to six turns
18-25	Filter and French press	Six to nine turns
Over 25	Coarse grinding usage	Nine to thirteen turns

- Grind a small amount of coffee and test its coarseness with your espresso machine.
- As coffee beans' qualities and characteristics are changing from time to time it is recommended repeating this adjustment once in a while.

Calibrating the encoder measurement and LCD display (Fig 5.3)

- As a rule, refrain from changing the grind setting position while the grinder is not connected to the electricity. In the case you suspect the setting display and the actual setting are misaligned please find below a simple step by step procedure to calibrate the display reading with the actual grinding setting:
 - Close the beans hopper door, grind empty the grinding chamber (till no more noise of grinding is coming from the grinder when it is operated)
 - Turn the dial knob counter clock wise (Fine direction) till reaching the knob's mechanical stop (where the knob can not turn any further)
 - Insert any kind of 1-2mm diameter pin through the reset hole, and gently press the internal reset button continuously for over 3 seconds.
 - Re-calibration is done! Now, the grinding setting and the display are aligned.
 - Return the grinding setting back to your previous setting (clock wise), while doing so please note that the display will immediately change from showing '– – ' to show '01' after a very minimal turn.



Fig 5.2



Fig 5.3

Adjusting coffee dosing

- The doser is equipped with a portion volumetric controlling knob.
- In order to increase the dosed amount the knob should be turned counterclockwise and vice versa (Fig 5.4).
- Test the portioned amounts by inserting a porta filter handle (not supplied) all the way into the fork shaped support and dose one or two portions.
- In order to achieve repeatable and consistent portioned amounts:
 - Make sure that the feeding star shaped mechanism is always overfilled with coffee powder.
 - Always retract the dosing lever all the way to the end of its stroke



Fig 5.4

Tamping

- Place the porta filter holder against the underside of the tamping device and push it upwards.

6) SAFETY DEVICES

A) Thermal overload protection

In order to eliminate the risk of fire the motor is equipped with an overheat protection device which will cutoff the motor's power supply should it reach a high temperature.

- In the event that the thermal protection is tripped as a result of malfunction (e.g.: jammed blades, worn out bearings, foreign object in grinding chamber, etc.) the appliance main switch should be turned off immediately and the main power plug must be disconnected. For further handling of the device contact your local service provider, and allow the appliance to cool down before any further maintenance.
- In the event that the thermal protection is tripped as a result of a long continuous operation (read section 5, for operating intervals) allow the appliance to cool down and reset the thermal cutoff protection by unplugging the main cable from the socket. On the first operation after resetting a tripped overheat protection device observe the grinding quality and noise level, and if there are any irregularities shut down the appliance and call a certified technician for a complete analysis of the appliance.

B) Grinding chamber safety screws

The grinding chamber can be a hazardous area if the proper precautions aren't observed. The hopper safety screw (fig4.1b) should never be removed during normal operation of the appliance unless the appliance is disconnected from the power source.

C) Coffee outlet guard

The coffee outlet guard (Fig 6.1) must always be fixed to the doser. On normal operation never remove the coffee outlet guard (unless when cleaning the doser, please refer to Chapter 9 Cleaning).



Fig 6.1

7) SAFETY INSTRUCTIONS

- NEVER OPERATE THE GRINDER IF THE BEAN HOPPER IS NOT FULLY SECURED TO THE TOP BLADE HOLDER. BEFORE REMOVING THE HOPPER FOR ANY REASON MAKE SURE TO DISCONNECT THE POWER SUPPLY.
- AVOID CLEARING FOREIGN OBJECTS FROM THE GRINDING CHAMBER OR HOPPER WHEN THE APPLIANCE IS PLUGGED INTO A POWER SOCKET.
- Never attempt to insert your fingers or any foreign objects into the grinding chamber or blades.
- Be aware that grinding blades continue rotating for a short while after the grinding operation has ended.
- BEFORE ANY MAINTENANCE, EVEN FOR CLEANING, ALWAYS DISCONNECT THE POWER SUPPLY.
- In the event that the appliance has a malfunction or the blades need to be replaced, get your local dealer's support before attempting service the grinder by yourself.
- Do not change or tamper with the grinder.
- Do not use the appliance barefoot or if your hands or feet are damp.
- Do not use the cable wire to pull and disconnect the power plug.
- Always keep the appliance dry (internally and externally).
- Never put grinded coffee into the hopper.
- Never attempt grinding anything else other than coffee beans.

8) MAINTENANCE AND SERVICE

Warning: All appliances' technical handling operations, such as installation, maintenance, or service should be performed by certified personnel or by your local dealer.

Check the state of the grinding blades periodically (approximately every 50kg of grinded coffee) Good condition blades will result in a high quality grind and prevent the appliances over heating. Replace grinding blades every 400KG of grinded coffee (when using original replacement parts)

Be aware of the appliance's noise level. In case the noise level is higher than normal or irregular noises are coming from within the appliance, get certified personnel to perform an overall check of the appliance.

9) CLEANING

Before any internal cleaning procedure please follow:

- Close the beans' hopper's door
- Grind empty the left-over beans inside the grinding chamber till no grinding sound when operating the grinder
- DISCONNECT THE GRINDER'S POWER SUPPLY.
- NEVER USE RUNNING WATER TO CLEAN THE MAIN BODY AND DOSER.
- In order to keep the surface's finish in perfect condition use only clean clothes/gentle brush/soft sponge to clean the surface of the grinder. DO NOT USE ABRASIVE CLEANING PRODUCTS.

Cleaning the beans' hopper

To ensure great coffee taste, clean the bean hopper periodically.

- Make sure beans' hopper door is closed and grinding chamber is empty.
- Empty the beans hopper from coffee beans
- Take off the bean hopper (by releasing Bean Hopper safety screw, Fig.4-1)
- Place any leftover coffee beans into a dry container
- Rinse the hopper thoroughly with water and soap
- As the bean hopper is made of clear polymer, use abrasive-free soap liquid only and soft sponge.
- Before reinstalling the beans hopper back to its position, make sure it is dried thoroughly.

Cleaning the grinding chamber

*The Aroma II grinder is equipped with the **Bottom Setting®** cutting edge technology allowing the grinding chamber to be cleaned without the need to modify the grind setting allow quicker and more efficient cleaning in terms of coffee beans usage.*

- Follow the entire above mentioned cleaning rules and remove the beans' hopper
- Identify the aluminum finished top grindstone holder and its 3 fixing screws
- Use the provided Alan key to remove the 3 screws
- Use a brush and clothes and pressured air (if available) to clean the top and bottom grindstone holders
- Do not use sharp objects to scrape coffee residue off of the blades.
- At the same time visually check the wear condition of the grindstones replace them if necessary

The replacement and assembly of a new set of grindstones is a delicate task that can influence the grinding quality, it should be performed only by technically skilled personnel

After all cleaning and replacing tasks are through make sure to assemble all of the parts and safety screws in the same way as they were disconnected. If anything does not fit back together or there are some leftover parts, do not attempt to operate the grinder, call for the assistance of your local dealer or technician.

Cleaning the dispensing doser

- Continuously operate the discharge handle in order to discharge the entire coffee powder out of the dispenser into a dry container by.
- Release the powder outlet guard by pulling it upward. The outlet guard is fixed by 2 rails and 2 snaps.
- Use a clean brush to clean the coffee powder outlet and the powder level switch (in AD models only). Brush the dosing chambers one by one while rotating the doser with the discharge handle. Use a dry cloth to remove oil stains and other marks from doser's clear window.
- After doser is thoroughly cleaned and empty secure the powder outlet guard Back to its original position by tightening the screws.

To ensure long lasting grinder and great fresh taste of coffee, the cleaning procedure as described above should be repeated rottenly and at least once per month or as necessary according the grinder's usage and quality of beans.

Final remark:

Before entering any deeper cleaning task or maintenance procedures that are not covered by this manual kindly consult with your technical service, local dealer or the manufacturer at www.heycafe.com (or mail your requests to info@heycafe.cn)

END

10

10)Remarks and important details

Add your remarks here

#	Date	Event	Remark
		Purchasing	

Important details and telephone numbers:

Local dealer

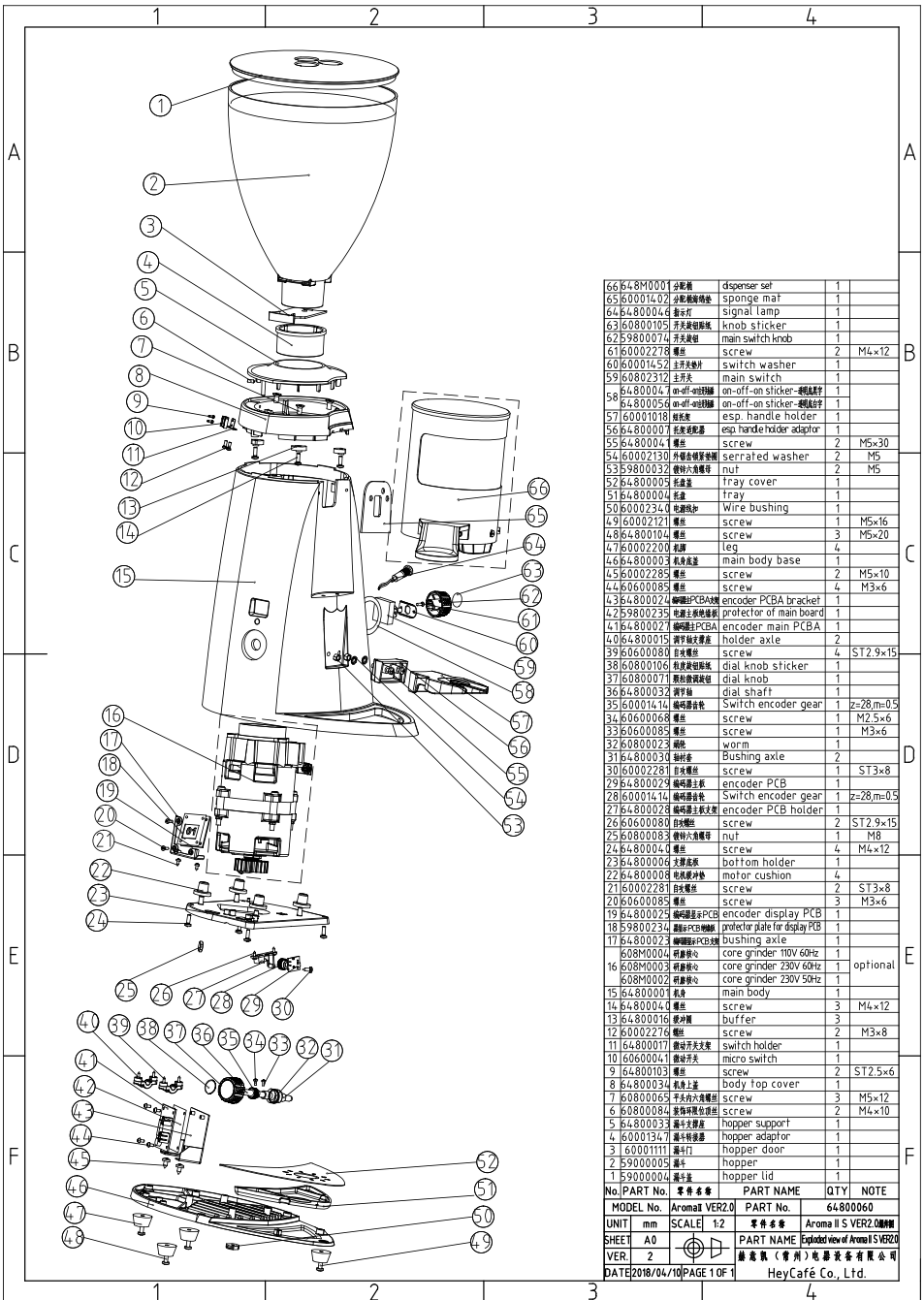
Address: _____

Telephone number: _____ Fax number: _____

Technician mobile number: _____ name: _____

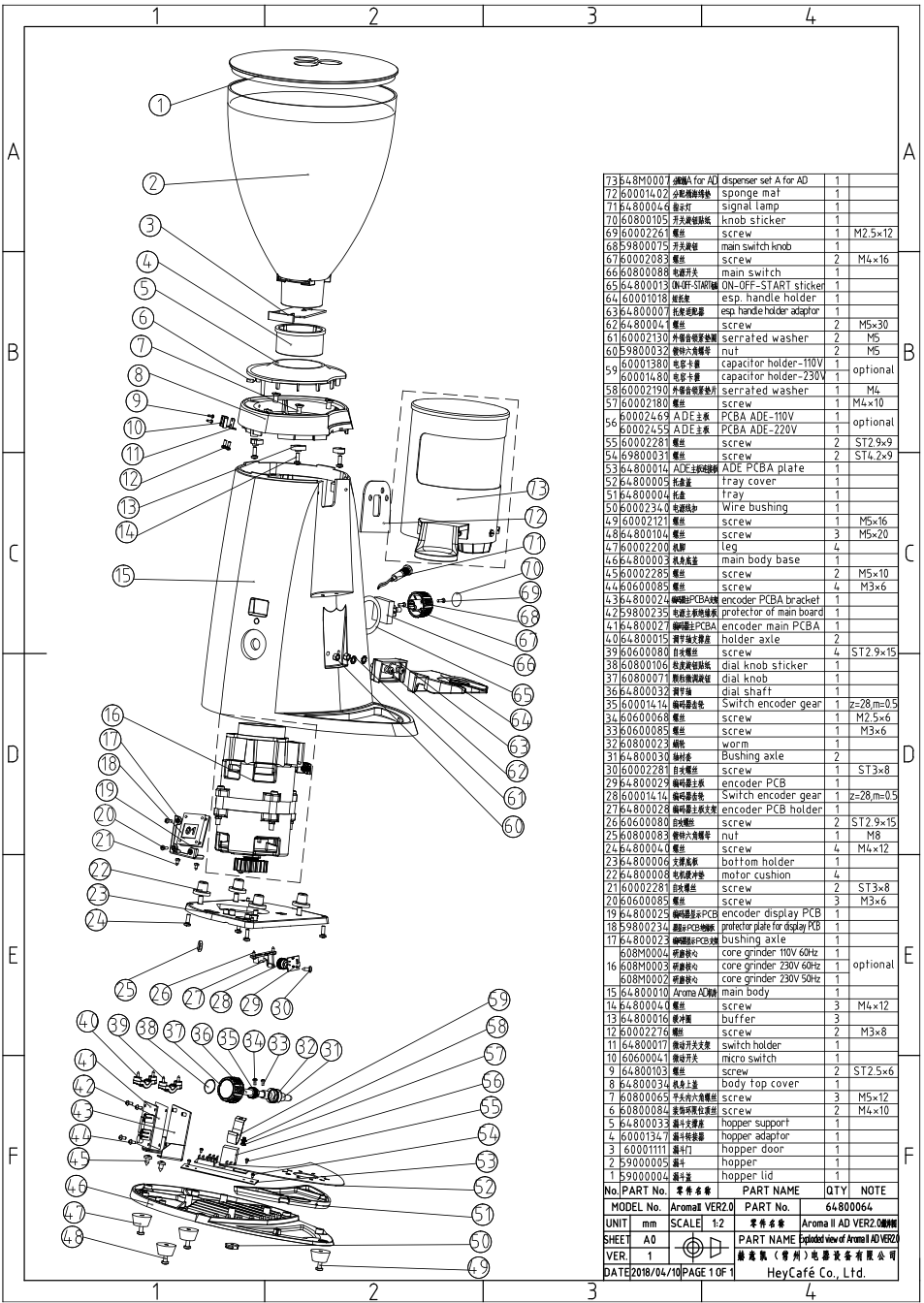
Coffee beans supplier details: _____

Telephone number: _____ Fax number: _____



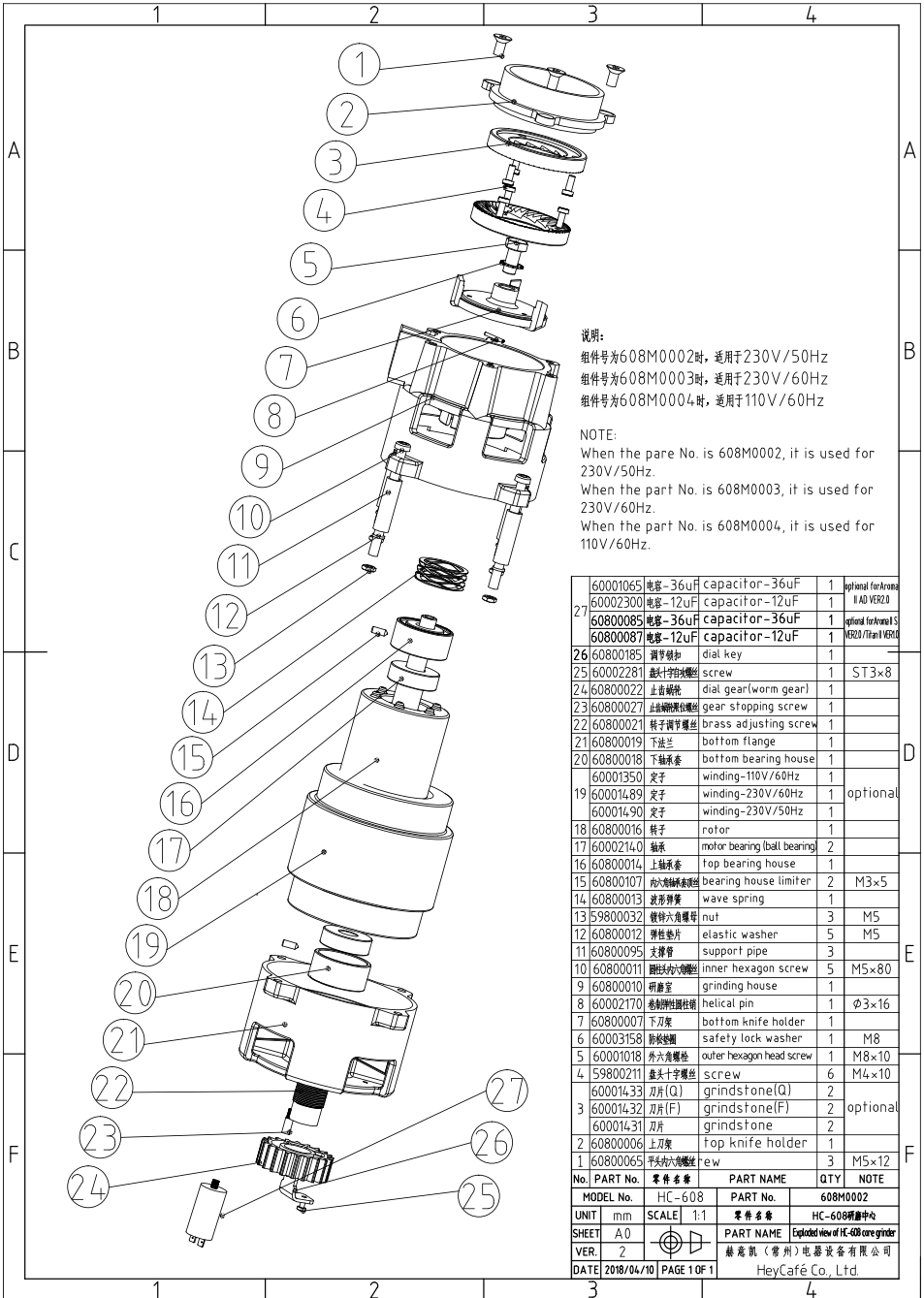
66.64.8M0001	分配器	dispenser set	1	
65.600014.04	分配器海绵体	sponge mat	1	
64.64.80004	信号灯	signal lamp	1	
63.6080105	开关按钮贴纸	knob sticker	1	
62.59800074	开关按钮	main switch knob	1	
61.60002278	螺丝	screw	2	M4×12
60.600014.52	开关洗垫	switch washer	1	
59.60802372	主开关	main switch	1	
58.64.80004	on-off-on按钮	on-off-on slider-按钮材料	1	
58.64.800054	on-off-on按钮	on-off-on slider-按钮材料	1	
57.60001018	把手架	esp. handle holder	1	
56.64.800007	把手适配器	esp handleholder adaptor	1	
55.64.80004	螺丝	screw	2	M5×30
54.60002130	外锯齿形垫圈	serrated washer	2	M5
53.59800032	螺母六角螺母	nut	2	M5
52.64.800005	托盘盖	tray cover	1	
51.64.800004	托盘	tray	1	
50.6000234.0	电刷架	Wire brushing	1	
49.60002121	螺丝	screw	1	M5×16
48.64.800104	螺丝	screw	3	M5×20
47.60002203	脚架	leg	4	
46.64.800003	机身底座	main body base	1	
45.60002285	螺丝	screw	2	M5×10
44.60600085	螺丝	screw	4	M3×6
43.64.800024	编码器PCBA架	encoder PCBA bracket	1	
42.59800023	防护罩	protector of main board	1	
41.64.800027	编码器PCBA	encoder main PCBA	1	
40.64.800018	轴杆	holder axle	2	
39.60600088	轴套	holder sleeve	4	
38.60800106	按钮贴纸	dial knob sticker	1	ST2.9x15
37.60800071	按钮	dial knob	1	
36.64.800032	轴杆	dial shaft	1	
35.600014.14	编码器齿轮	Switch encoder gear	1	z=28,m=0.5
34.60600068	螺丝	screw	1	M2.5×6
33.60600085	螺丝	screw	1	M3×6
32.60800023	蜗轮	worm	1	
31.64.800030	轴杆套	Bushing axle	2	
30.60002281	自攻螺丝	screw	1	ST3×8
29.64.800023	编码器主板	encoder PCB	1	
28.600014.14	编码器齿轮	Switch encoder gear	1	z=28,m=0.5
27.64.800028	编码器主板架	encoder PCB holder	2	ST2.9x15
26.60600088	轴套	screw	2	ST2.9x15
25.60800083	螺母六角螺母	nut	1	M8
24.64.80004.0	螺丝	screw	4	M4×12
23.64.800006	底座架	bottom holder	1	
22.64.800008	电机缓冲垫	motor cushion	4	
21.60002281	自攻螺丝	screw	2	ST3×8
20.60600085	螺丝	screw	3	M3×6
19.64.800023	编码器显示PCB	encoder display PCB	1	
18.59800234	编码器防护罩	protector plate for display PCB	1	
17.64.800023	编码器PCBA架	bushing axle	1	
608M0004	研磨核心	core grinder 110V 60Hz	1	
16.608M0003	研磨核心	core grinder 230V 60Hz	1	optional
608M0001	研磨核心	core grinder 230V 50Hz	1	
15.64.800005	机身	main body	1	
14.64.80004.0	螺丝	screw	3	M4×12
13.64.800016	缓冲垫	buffer	3	
12.60002276	螺丝	screw	2	M3×8
11.64.800017	开关按钮架	switch holder	1	
10.6060004	微动开关	micro switch	2	ST2.5x6
9.64.800103	螺丝	screw	2	ST2.9x15
8.64.800034	机身盖	body top cover	1	
7.60800065	漏斗六角螺母	hopper support	3	M5×12
6.60800084	漏斗限位螺母	hopper adaptor	2	M4×10
5.64.800033	漏斗支撑架	hopper support	1	
4.6000134.0	漏斗适配器	hopper adaptor	1	
3.60001111	漏斗门	hopper door	1	
2.59000005	漏斗	hopper	1	
1.59000004	漏斗盖	hopper lid	1	

No.	PART No.	零件名称	PART NAME	QTY	NOTE
MODEL No.	Aroma II VER2.0	PART No.	64.800060		
UNIT	mm	SCALE	1:2		零件名称 Aroma II S VER2.0咖啡机
SHEET	A0				PART NAME Exploded view of Aroma II S VER2.0
VER.	2				蘇高航(廣州)咖啡設備有限公司
DATE	2018/04/10	PAGE	1 OF 1		HeyCafé Co., Ltd.



73	648M0007	油隔/A for AD	dispenser set A for AD	1	
72	60001402	发泡棉/海绵垫	sponge mat	1	
71	64800046	指示灯	signal lamp	1	
70	60800105	开关按钮贴板	knob sticker	1	
69	60002266	螺丝	screw	1	M2.5x12
68	59800075	开关按钮	main switch knob	1	
67	60002083	螺丝	screw	2	M4x16
66	60800088	电源开关	main switch	1	
65	64800013	ON-OFF-START	ON-OFF-START sticker	1	
64	60001018	按钮	esp. handle holder	1	
63	64800007	托架适配器	esp. handle holder adaptor	1	
62	64800041	螺丝	screw	2	M5x30
61	60002130	外圈锯齿垫圈	serrated washer	2	M5
60	59800032	螺母六角螺母	nut	2	M5
59	60001380	电容卡槽	capacitor holder-110V	1	optional
58	60002190	外圈锯齿垫圈	serrated holder-230V	1	M4
57	60002180	螺丝	screw	1	M4x10
56	60002469	ADE主板	PCBA ADE-110V	1	optional
55	60002288	螺丝	screw	2	ST2.9x9
54	69800033	螺丝	screw	2	ST4.2x9
53	64800014	ADE主电路板	ADE PCBA plate	1	
52	64800005	托架盖	tray cover	1	
51	64800004	托架	tray	1	
50	60002340	电线扣	wire bushing	1	
49	60002121	螺丝	screw	1	M5x16
48	64800104	螺丝	screw	3	M5x20
47	60002203	机脚	leg	4	
46	64800003	机身底座	main body base	1	
45	60002285	螺丝	screw	2	M5x10
44	60600085	螺丝	screw	4	M3x6
43	64800024	编码器PCBA板	encoder PCBA bracket	1	
42	598000235	主板保护板	protector of main board	1	
41	64800022	编码器PCBA	encoder main PCBA	1	
40	64800010	轴套	holder axle	2	
39	60600080	轴套	screw	4	ST2.9x15
38	60800106	刻度按钮贴板	dial knob sticker	1	
37	60800071	刻度按钮	dial knob	1	
36	64800032	轴套	dial shaft	1	
35	60001414	编码器齿轮	Switch encoder gear	1	z=28,m=0.5
34	60600060	螺丝	screw	1	M2.5x6
33	60600085	螺丝	screw	1	M3x6
32	60800023	蜗轮	worm	1	
31	64800030	轴套	Bushing axle	2	
30	60002281	自攻螺丝	screw	1	ST3x8
29	64800029	编码器主板	encoder PCB	1	
28	60001414	编码器齿轮	Switch encoder gear	1	z=28,m=0.5
27	64800028	编码器主板	encoder PCB holder	1	
26	60600080	轴套	screw	2	ST2.9x15
25	60800083	螺母六角螺母	nut	1	M8
24	64800040	螺丝	screw	4	M4x12
23	64800006	底座板	bottom holder	1	
22	64800008	电机缓冲垫	motor cushion	4	
21	60002281	自攻螺丝	screw	2	ST3x8
20	60600085	螺丝	screw	3	M3x6
19	64800025	编码器PCBA	encoder display PCB	1	
18	598000234	编码器PCBA板	protector plate for display PCB	1	
17	64800023	编码器PCBA板	bushing axle	1	
16	608M0004	研磨核心	core grinder 110V 60Hz	1	optional
15	608M0003	研磨核心	core grinder 230V 60Hz	1	
14	608M0030	研磨核心	core grinder 230V 50Hz	1	
13	64800101	Arma II 机身	main body	1	
12	64800040	螺丝	screw	3	M4x12
11	64800016	缓冲垫	buffer	3	
10	60002276	螺丝	screw	2	M3x8
9	64800017	微动开关	switch holder	1	
8	60600041	微动开关	micro switch	1	
7	64800103	螺丝	screw	2	ST2.5x6
6	64800034	机身盖	body top cover	1	
5	60800065	平头六角螺母	screw	3	M5x12
4	60800084	美标厚螺母	screw	2	M4x10
3	64800033	漏斗支撑架	hopper support	1	
2	60001341	漏斗适配器	hopper adaptor	1	
1	60001111	漏斗盖	hopper door	1	
0	59000005	漏斗	hopper	1	
0	59000004	漏斗盖	hopper lid	1	

No.	PART No.	零件名称	PART NAME	QTY	NOTE
MODEL No. <td>SCALE <td>VER2.0 <td>PART No. <td>64800064 <td></td> </td></td></td></td>	SCALE <td>VER2.0 <td>PART No. <td>64800064 <td></td> </td></td></td>	VER2.0 <td>PART No. <td>64800064 <td></td> </td></td>	PART No. <td>64800064 <td></td> </td>	64800064 <td></td>	
UNIT	mm	SCALE	1:2	零件名称	Aroma II AD VER2.0详细图
SHEET	A0			PART NAME	Exploded view of Aroma II AD VER2.0
VER.	1				嘉善凯(贵州)咖啡设备有限公司
DATE	2018/04/10	PAGE	1 OF 1		HeyCafé Co., Ltd.



说明:

组件号为608M0002时,适用于230V/50Hz

组件号为608M0003时,适用于230V/60Hz

组件号为608M0004时,适用于110V/60Hz

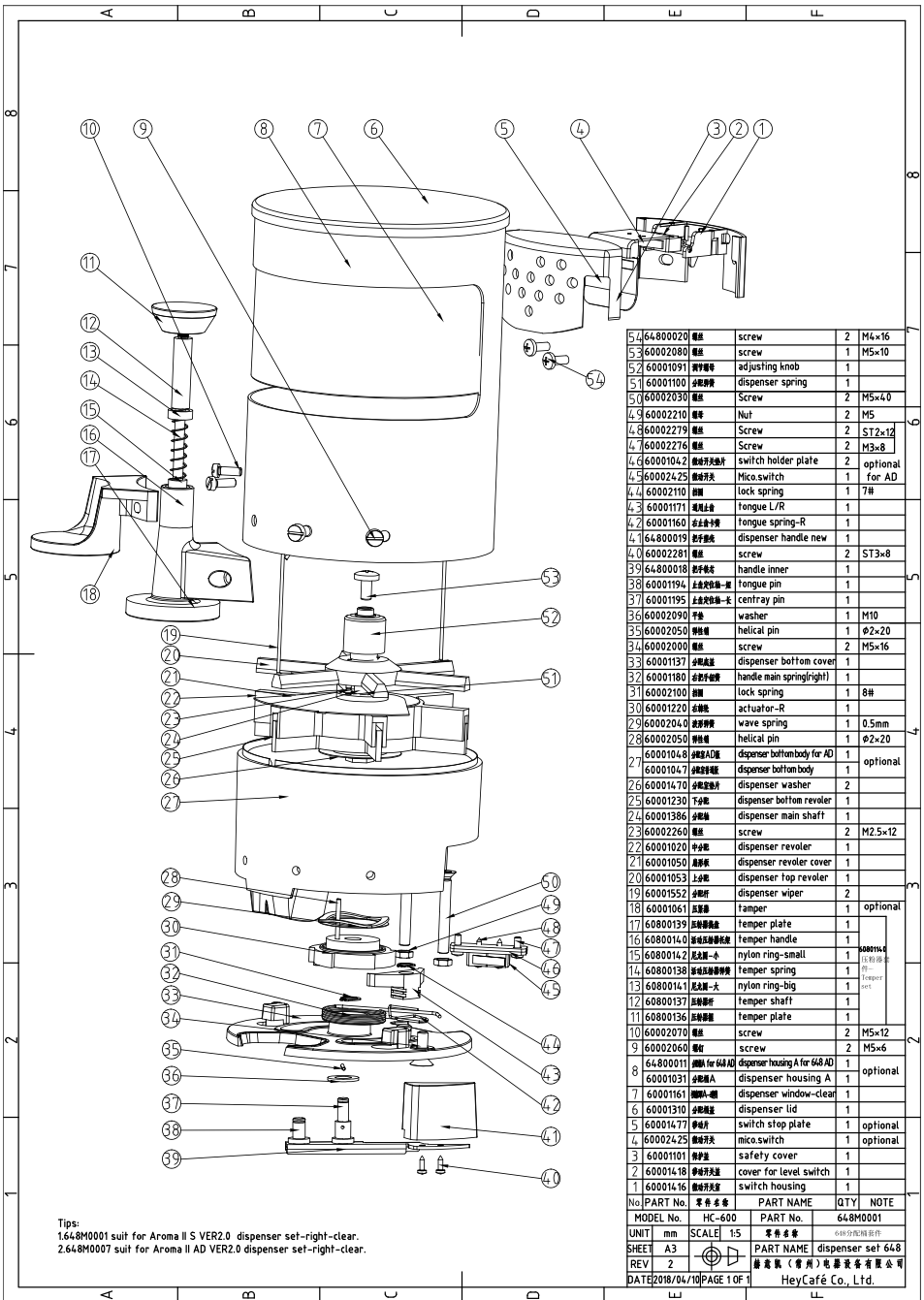
NOTE:

When the part No. is 608M0002, it is used for 230V/50Hz.

When the part No. is 608M0003, it is used for 230V/60Hz.

When the part No. is 608M0004, it is used for 110V/60Hz.

27	60001065	电容-36uF	capacitor-36uF	1	optional for model II AD VER2.0
	60002300	电容-12uF	capacitor-12uF	1	
	60800085	电容-36uF	capacitor-36uF	1	optional for model VER2.0/II AD VER2.0
	60800087	电容-12uF	capacitor-12uF	1	
26	60800185	调字键扣	dial key	1	
25	60002281	嵌字螺丝	screw	1	ST3×8
24	60800022	止齿蜗轮	dial gear(worm gear)	1	
23	60800027	止齿蜗轮螺丝	gear stopping screw	1	
22	60800021	转子调节螺丝	brass adjusting screw	1	
21	60800019	下轴盖	bottom flange	1	
20	60800018	下轴承套	bottom bearing house	1	
19	60001350	定子	winding-110V/60Hz	1	optional
	60001489	定子	winding-230V/60Hz	1	
	60001490	定子	winding-230V/50Hz	1	
18	60800016	转子	rotor	1	
17	60002140	轴承	motor bearing (ball bearing)	2	
16	60800014	上轴承套	top bearing house	1	
15	60800107	轴承限位套	bearing house limiter	2	M3×5
14	60800013	波簧	wave spring	1	
13	59800032	螺母六角螺母	nut	3	M5
12	60800012	弹性垫片	elastic washer	5	M5
11	60800095	支撑管	support pipe	3	
10	60800011	内六角螺丝	inner hexagon screw	5	M5×8.0
9	60800010	研磨室	grinding house	1	
8	60002170	研磨轴销	helical pin	1	φ3×16
7	60800007	下刀架	bottom knife holder	1	
6	60003158	防松垫圈	safety lock washer	1	M8
5	60001018	外六角螺丝	outer hexagon head screw	1	M8×10
4	59800211	垫头十字螺丝	screw	6	M4×10
3	60001433	刃片(Q)	grindstone(Q)	2	optional
	60001432	刃片(F)	grindstone(F)	2	
	60001431	刃片	grindstone	2	
2	60800006	上刀架	top knife holder	1	
1	60800065	平头六角螺丝	rew	3	M5×12
No. PART No.		零件名称	PART NAME	QTY	NOTE
MODEL No.	HC-608	SCALE	1:1	PART No. 608M0002	
UNIT	mm	零件名称		HC-608研磨中心	
SHEET	A.0	PART NAME		Exploded view of HC-608 core grinder	
VER.	2	蘇高凱(常州)电器设备有限公司			
DATE	2018/04/10	PAGE	1 OF 1	HeyCafé Co., Ltd.	



5,4	64.800020	螺丝	screw	2	M4x16	
5,3	60002080	螺丝	screw	1	M5x10	
5,2	60001091	调整螺母	adjusting knob	1		
5,1	60001100	分动弹簧	dispenser spring	1		
5,0	60002030	螺丝	Screw	2	M5x4.0	
4,9	60002210	螺母	Nut	2	M5	
4,8	60002279	螺丝	Screw	2	ST2x12	
4,7	60002276	螺丝	Screw	2	M3x8	
4,6	60001042	微动开关垫片	switch holder plate	2		optional for AD
4,5	60002425	微动开关	Mico switch	1		
4,4	60002110	锁圈	lock spring	1	7#	
4,3	60001171	通用上盖	fongue L/R	1		
4,2	60001160	右盖卡簧	fongue spring-R	1		
4,1	64.800019	分动壳体	dispenser handle new	1		
4,0	60002281	螺丝	screw	2	ST3x8	
3,9	64.800018	分动壳盖	handle inner	1		
3,8	60001194	上盖顶轴-短	fongue pin	1		
3,7	60001195	上盖顶轴-长	centray pin	1		
3,6	60002090	垫圈	washer	1	M10	
3,5	60002050	蜗轮轴	helical pin	1	Φ2x20	
3,4	60002000	螺丝	screw	2	M5x16	
3,3	60001137	分动底座	dispenser bottom cover	1		
3,2	60001180	分动弹簧	handle main spring(right)	1		
3,1	60002100	锁圈	lock spring	1	8#	
3,0	60001220	传动轴	actuator-R	1		
2,9	60002040	波簧	wave spring	1	0.5mm	
2,8	60002050	蜗轮轴	helical pin	1	Φ2x20	optional
2,7	60001048	分动底座	dispenser bottombody for AD	1		optional
2,6	60001047	分动底座	dispense bottom body	1		
2,5	60001070	分动蜗轮轴	dispense washer	2		
2,4	60001230	分动轴	dispenser bottom revolver	1		
2,3	60001386	分动轴	dispenser main shaft	1		
2,2	60002260	螺丝	screw	2	M2.5x12	
2,1	60001020	分动轴	dispenser revolver	1		
2,0	60001050	分动轴	dispenser revolver cover	1		
1,9	60001053	上盖	dispenser top revolver	1		
1,8	60001552	刮板	dispenser wiper	2		
1,7	60001061	压簧	tamper	1		optional
1,6	60800139	压簧板	tamper plate	1		
1,5	60800140	压簧板手柄	tamper handle	1		
1,4	60800142	尼龙环-小	nylon ring-small	1		648M0014 适用 648 系列
1,3	60800138	尼龙环-中	tamper spring	1		
1,2	60800141	尼龙环-大	nylon ring-big	1		
1,1	60800137	压簧轴	tamper shaft	1		
1,0	60800136	压簧板	tamper plate	1		
9	60002070	螺丝	screw	2	M5x12	
8	60002060	螺丝	screw	2	M5x6	
7	64.800011	分动罩 A	dispenser housing A for 648 AD	1		optional
6	60001031	分动罩	dispenser housing A	1		
5	60001161	微动开关	dispenser window-clear	1		
4	60001310	分动罩	dispenser lid	1		
3	60001477	分动轴	switch stop plate	1		optional
2	60002425	微动开关	mico switch	1		optional
1	60001101	安全盖	safety cover	1		
0	60001418	微动开关盖	cover for level switch	1		
0	60001416	微动开关壳	switch housing	1		

Tips:
 1.648M0001 suit for Aroma II S VER2.0 dispenser set-right-clear.
 2.648M0007 suit for Aroma II AD VER2.0 dispenser set-right-clear.

No.	PART No.	零件名称	PART NAME	QTY	NOTE
MODEL No.	HC-60D		PART No.	648M0001	
UNIT	mm	SCALE	1:5	零件名称	648系列用零件
SHEET	A3			PART NAME	dispenser set 648
REV	2				
DATE	2018/04/10	PAGE	1 OF 1		蘇露儀(常州)电器设备有限公司 HeyCafé Co., Ltd.

